

# my Handwriting Booklet

Name: \_\_\_\_\_

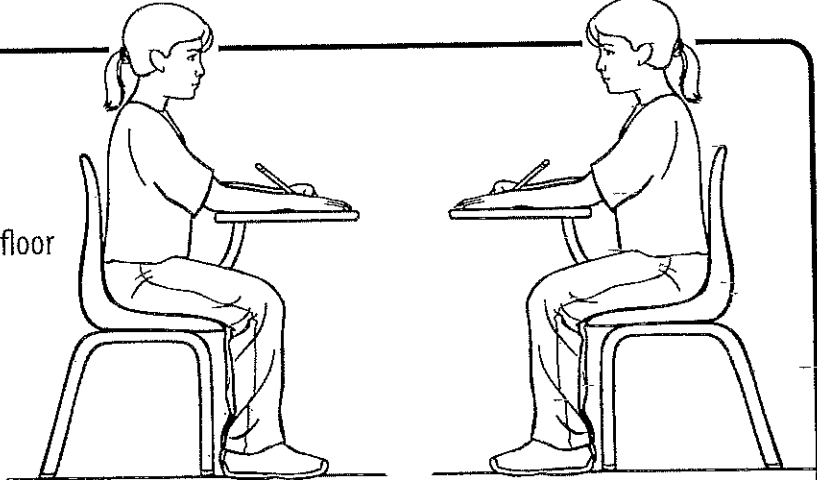
Class: 2nd



**1**

### Sit right

Seat pulled in, feet on floor



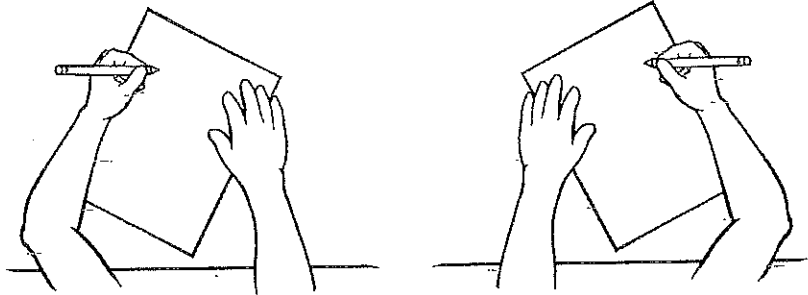
LEFT-HANDED

RIGHT-HANDED

**2**

### Place paper and hands right

Paper slanted, wrist straight, elbow on desk, other hand holding paper



LEFT-HANDED

RIGHT-HANDED

**3**

### Grip pencil right

Pencil held between index finger and thumb, resting on the other fingers



LEFT-HANDED

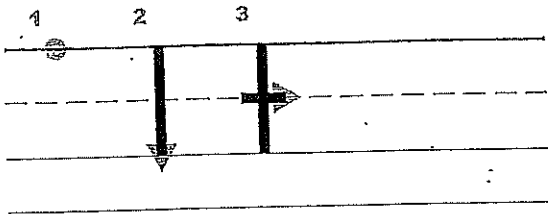
RIGHT-HANDED



**Let's write!**

## Letter Formation for t

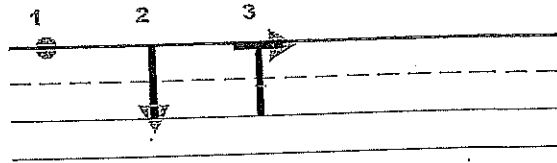
t is a sky line letter.  
It starts on the (sky line).



1. Point to the sky line.
2. Go down to the grass line.
3. Cross it on the plane line.
4. Say t - top - /t/; have students repeat.

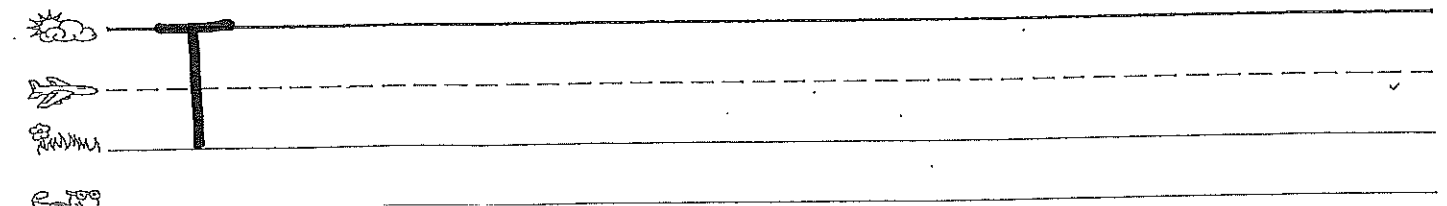
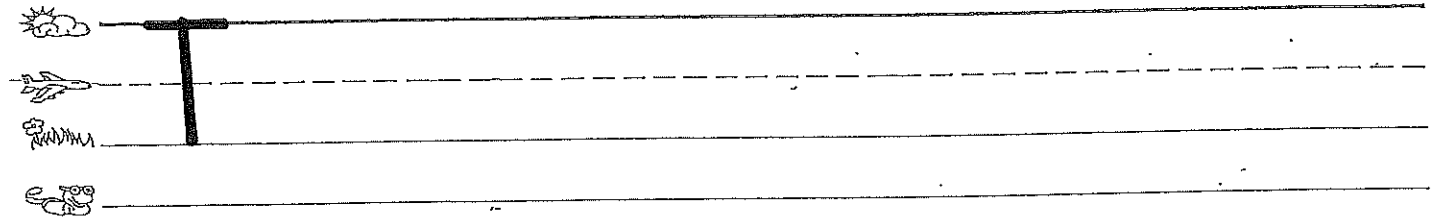
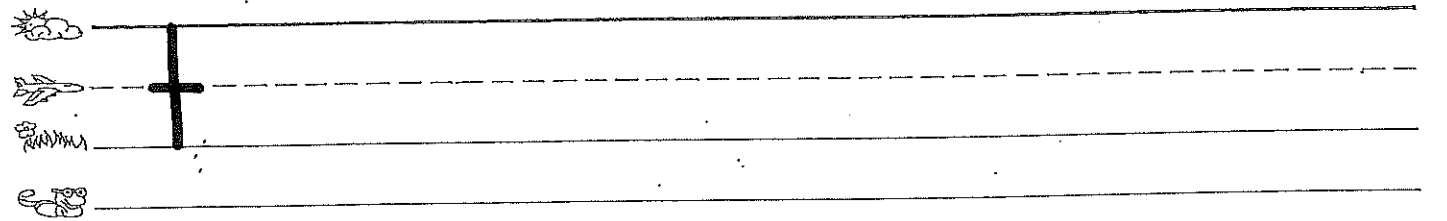
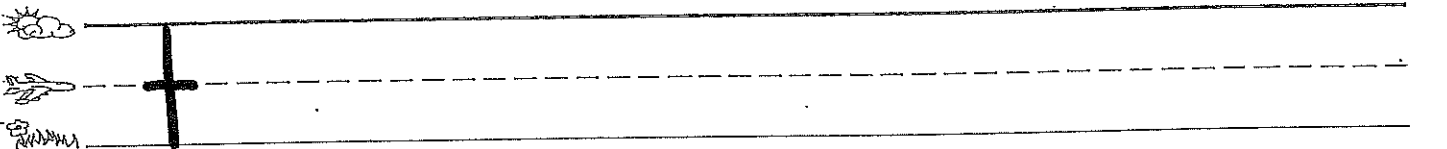
WILSON Foundations®

## Letter Formation for T



1. Point to the sky line.
2. Go down to the grass line.
3. Cross on the sky line.
4. Say t - top - /t/; have students repeat.

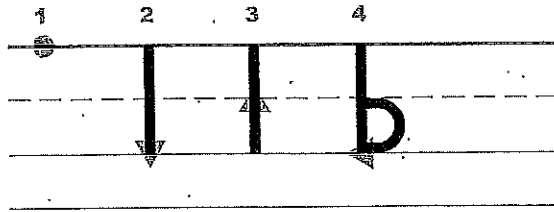
WILSON Foundations®



## Letter Formation for b

b is a sky line letter.

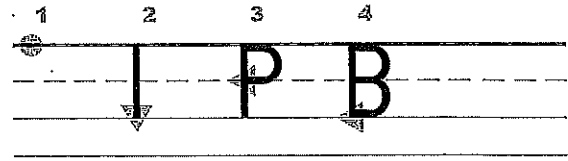
It starts on the (sky line).



1. Point to the sky line.
2. Go down to the grass line.
3. Trace up to the plane line,
4. and around to the grass line.
5. Say b - bat - /b/; have students repeat.

WILSON Foundations®

## Letter Formation for B



1. Point to the skyline.
2. Go down to the grass line.
3. Start back at the skyline and go around to the plane line,
4. and around again to the grass line.
5. Say b - bat - /b/; have students repeat.

WILSON Foundations®



b



b



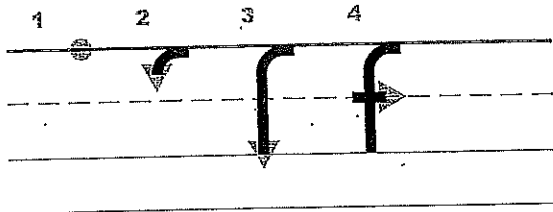
B



B

## Letter Formation for f

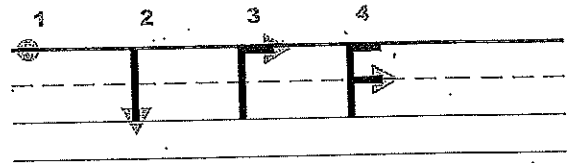
f is a sky line letter.  
It starts on the (sky line).



1. Point to the sky line.
2. Trace back on the sky line;
3. and then way down to the grass line.
4. Cross it on the plane line.
5. Say f - fun - /f/; have students repeat.

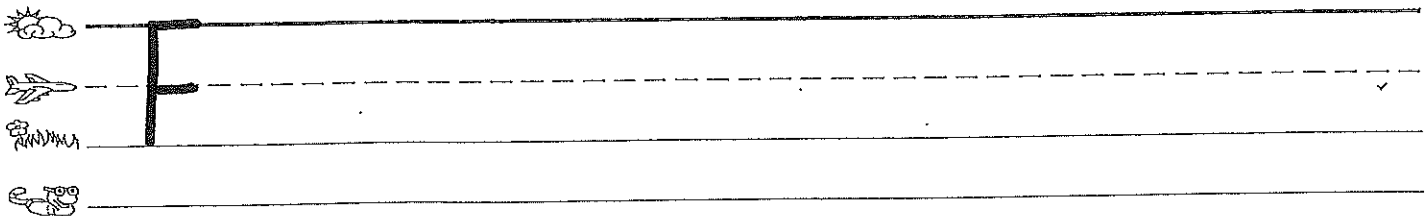
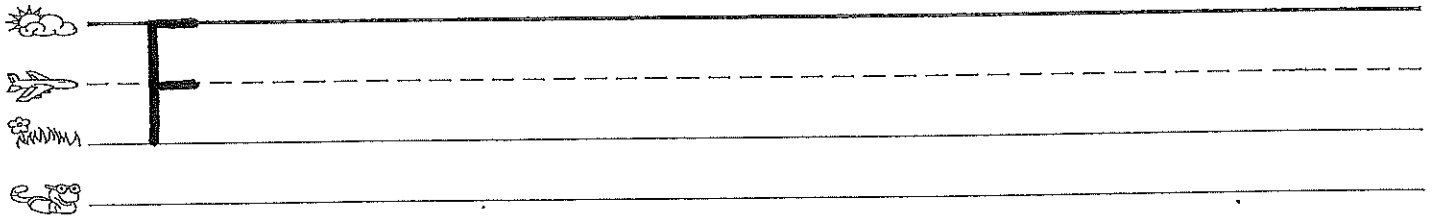
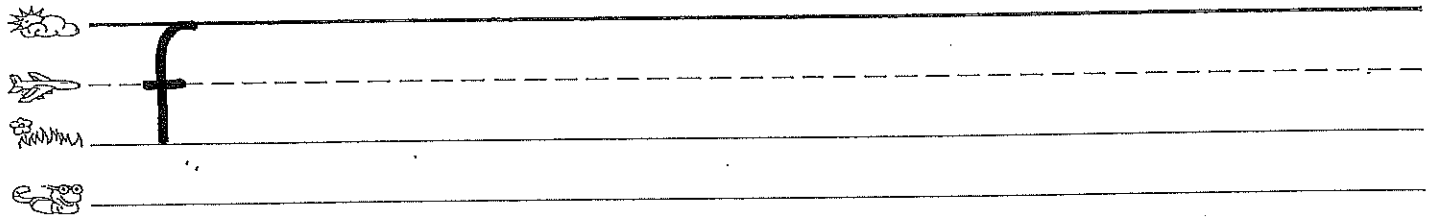
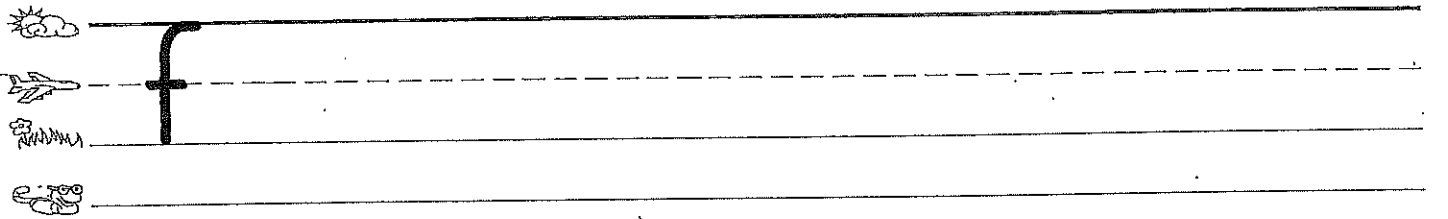
WILSON Foundations®

## Letter Formation for F



1. Point to the sky line.
2. Go down to the grass line.
3. Make a line on the sky line.
4. Make a line on the plane line.
5. Say f - fun - /f/; have students repeat.

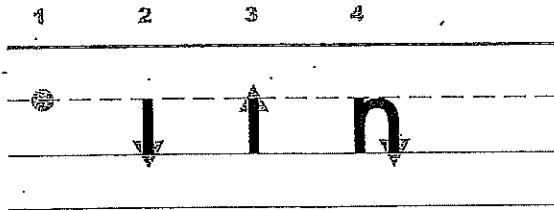
WILSON Foundations®



## Letter Formation for n

n is a plane line letter.

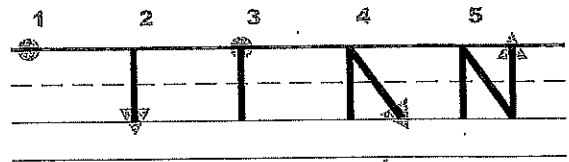
It starts on the (plane line).



1. Point to the plane line.
2. Go down to the grass line.
3. Trace back up to the plane line,
4. and make a hump.
5. Say n - nut - /n/; have students repeat.

WILSON Foundations®

## Letter Formation for N



1. Point to the sky line.
2. Go down to the grass line.
3. Point to the sky line.
4. Slide down to the grass line.
5. Go straight up to the sky line.
6. Say n - nuf - /n/; have students repeat.

WILSON Foundations®



n



n



N



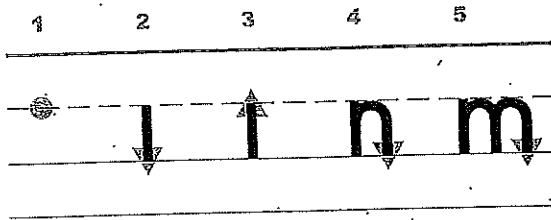
N



## Letter Formation for m

m is a plane line letter.

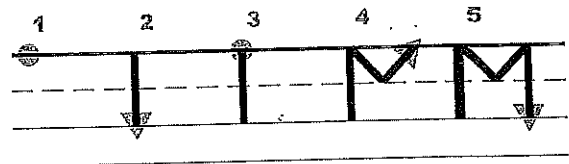
It starts on the (plane line).



1. Point to the plane line.
2. Go down to the grass line.
3. Trace back up to the plane line,
4. and make a hump,
5. and then back up to the plane line and make another hump.
6. Say m - man - /m/; have students repeat.

WILSON Foundations®

## Letter Formation for M



1. Point to the sky line.
2. Go down to the grass line.
3. Point to the sky line.
4. Slide down to the plane line, and slide back up to the sky line.
5. Go down to the grass line.
6. Say m - man - /m/; have students repeat.

WILSON Foundations®



m



m



M

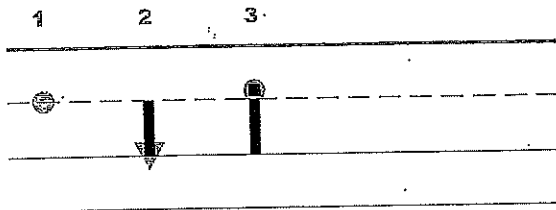


M

## Letter Formation for i

i is a plane line letter.

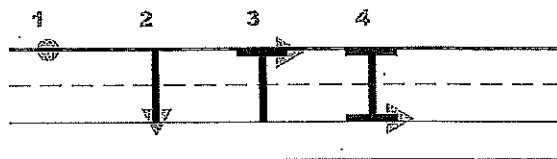
It starts on the (plane line).



1. Point to the plane line.
2. Go down to the grass line.
3. Add a dot.
4. Say i - itch - /i/; have students repeat.

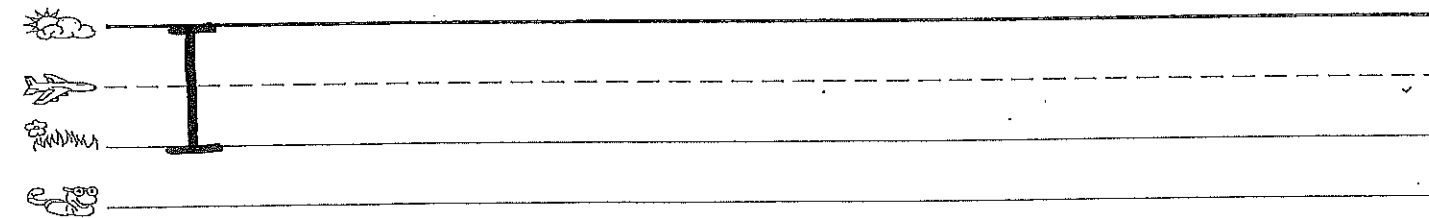
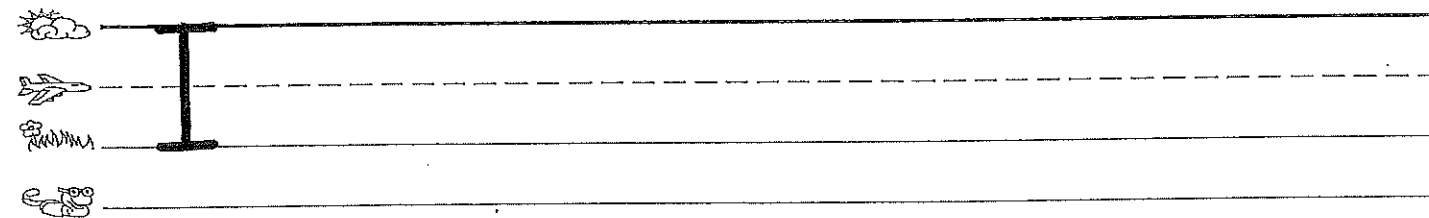
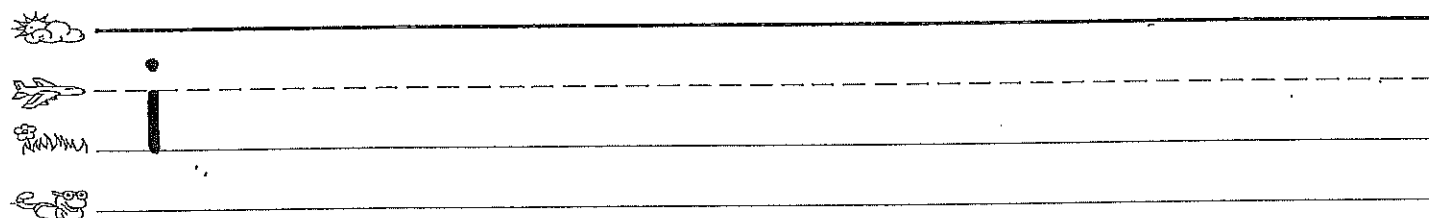
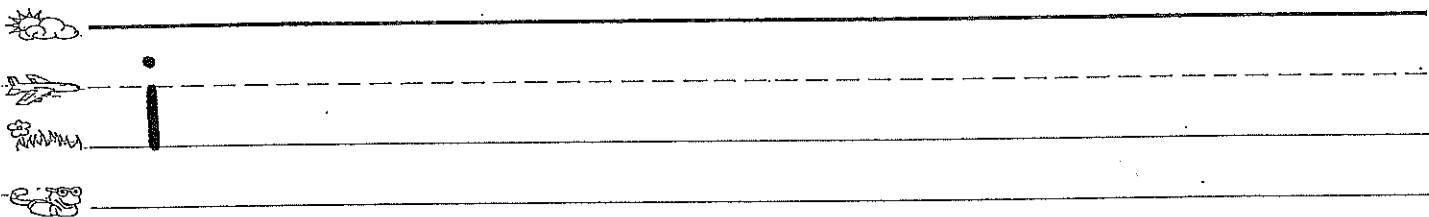
WILSON Foundations®

## Letter Formation for I



1. Point to the sky line.
2. Go down to the grass line.
3. Cross on the sky line,
4. and cross in the grass line.
5. Say I - itch - /I/; have students repeat.

WILSON Foundations®

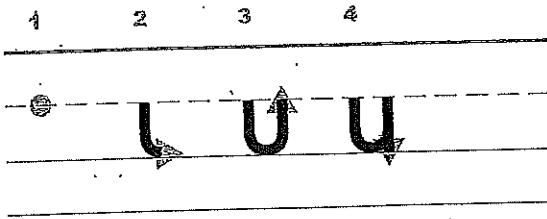




## Letter Formation for u

u is a plane line letter.

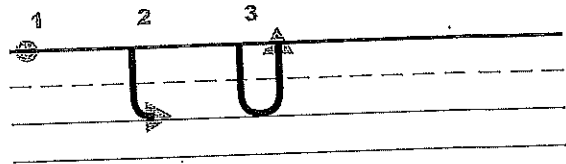
It starts on the (plane line).



1. Point to the plane line.
2. Go down to the grass line.
3. Curve up to the plane line,
4. and trace straight down to the ground line.
5. Say u - up - /û/; have students repeat.

WILSON Foundations®

## Letter Formation for U



1. Point to the sky line.
2. Go to the grass line,
3. and curve up to the sky line.
4. Say u - up - /û/; have students repeat.

WILSON Foundations®



u



u



U

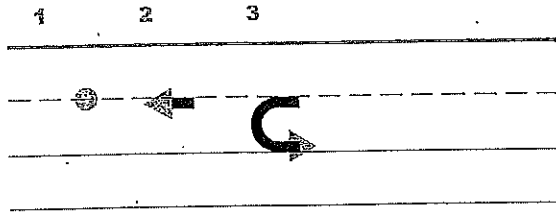


U

## Letter Formation for C

c is a plane line round letter.

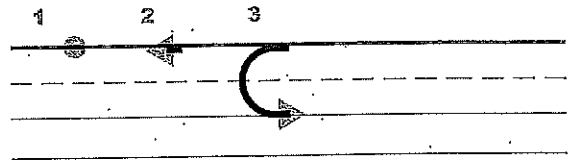
It starts on the (plane line).



1. Point to the plane line.
2. Start to fly backwards,
3. and go down and around to the grass line.
4. Say c - cat - /k/; have students repeat.

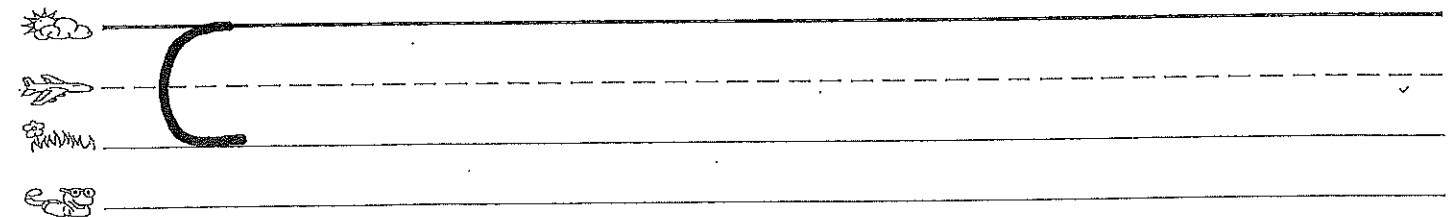
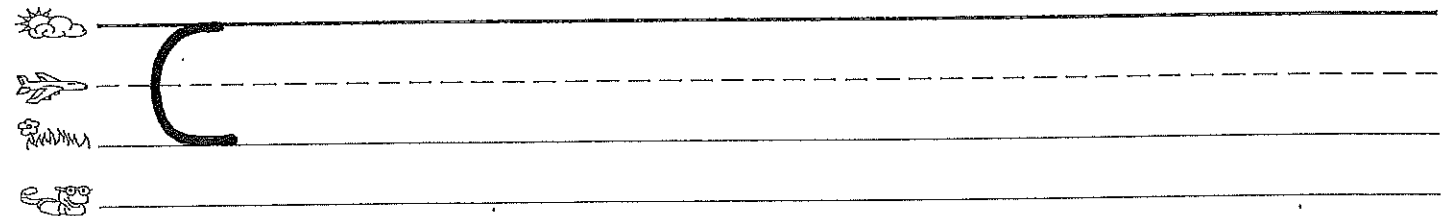
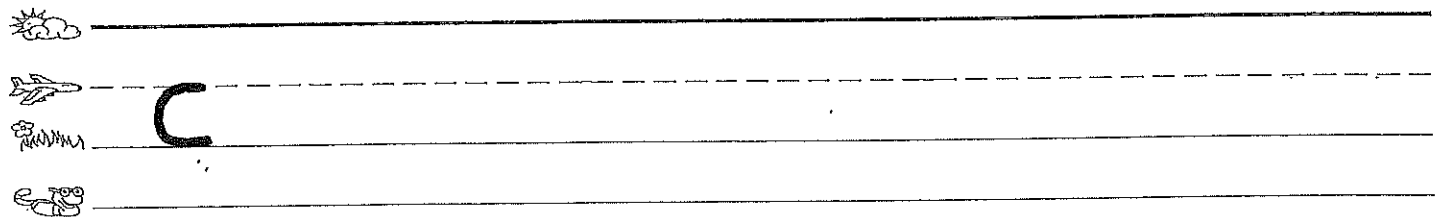
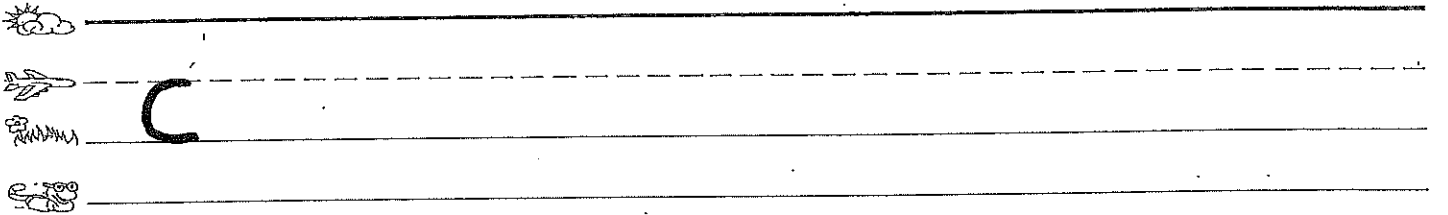
WILSON Foundations®

## Letter Formation for C



1. Point to the sky line.
2. Fly back on the sky line,
3. and down around to the grass line.
4. Say c - cat - /k/; have students repeat.

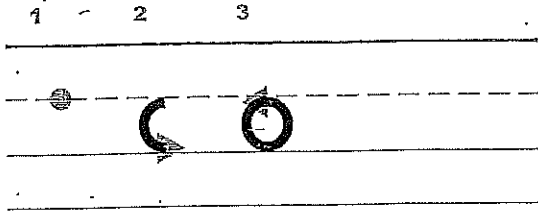
WILSON Foundations®



## Letter Formation for O.

o is a plane line round letter.

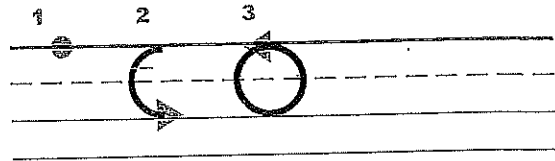
It starts on the (plane line) just like a c.



1. Point to the plane line.
2. Trace back, then down to the grass line,
3. and around back up to the plane line.
4. Say o - octopus - /ō/; have students repeat.

WILSON Foundations®

## Letter Formation for O



1. Point to the sky line.
2. Trace back, then down around to the grass line,
3. and around back up to the sky line.
4. Say o - octopus - /ō/; have students repeat.

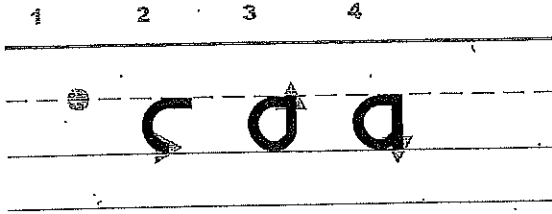
WILSON Foundations®

Handwriting practice section with four rows of lines. Each row includes a sun icon, a jet icon, and a scorpion icon on the left. The first row shows a small lowercase 'o' on the plane line. The second row shows a small lowercase 'o' on the plane line. The third row shows a large uppercase 'O' on the sky line. The fourth row shows a large uppercase 'O' on the sky line.

## Letter Formation for a

a is a plane line round letter.

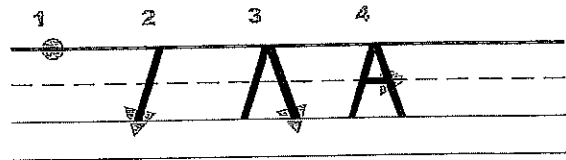
It starts on the (plane line).



1. Point to the plane line.
2. Go back on the plane line then down and around on the grass line,
3. and up to the plane line.
4. Trace back down to the grass line.
5. Say a - apple - /ă/; have students repeat.

WILSON Foundations®

## Letter Formation for A



1. Point to the sky line.
2. Slide back to the grass line.
3. Start back at the sky line and slide down to the grass line.
4. Cross on the plane line.
5. Say a - apple - /ă/; have students repeat.

WILSON Foundations®



a



a



A

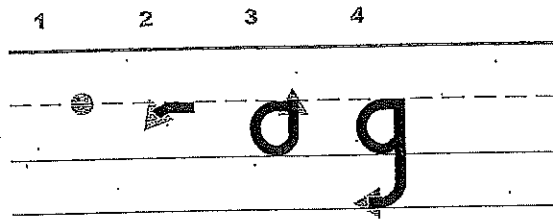


A

## Letter Formation for g

g is a plane line round letter.

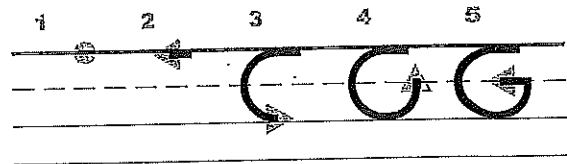
It starts on the (plane line) just like a c.



1. Point to the plane line.
2. Trace back on the plane line,
3. down and around all the way back to the plane line.
4. Trace back down all the way to the worm line and make a curve.
5. Say g - game - /g/; have students repeat.

WILSON Foundations®

## Letter Formation for G



1. Point to the sky line.
2. Fly back on the sky line.
3. Around to the grass line.
4. Up to the plane line,
5. and back straight on the plane line.
6. Say g - game - /g/; have students repeat.

WILSON Foundations®



g



g



G

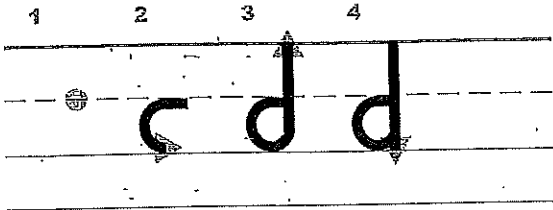


G

## Letter Formation for d

d is a plane line round letter.

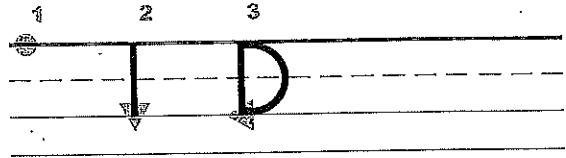
It starts on the (plane line) just like a c.



1. Point to the plane line.
2. Go back, down and around to the grass line,
3. all the way back up to the sky line.
4. Trace back down to the grass line.
5. Say d - dog - /d/; have students repeat.

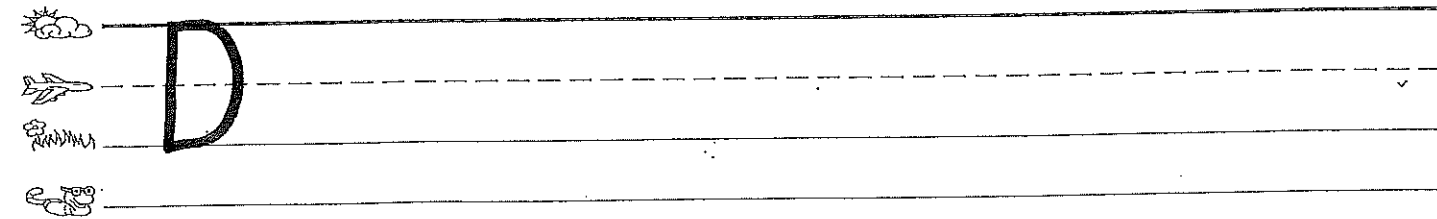
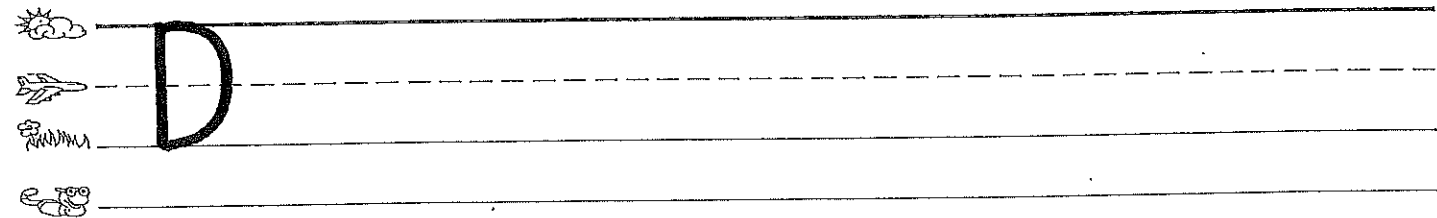
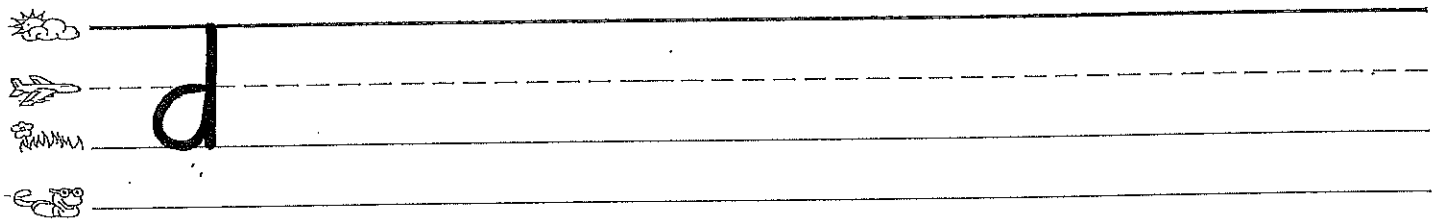
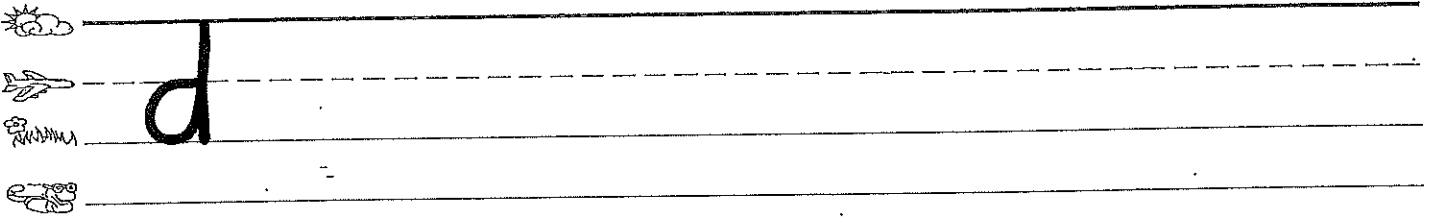
WILSON Foundations®

## Letter Formation for D



1. Point to the sky line.
2. Go down to the grass line.
3. Start back on the sky line and go all the way around to the grass line.
4. Say d - dog - /d/; have students repeat.

WILSON Foundations®

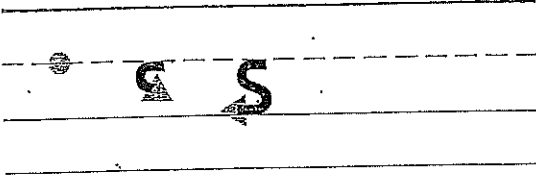


## Letter Formation for S

s is a plane line round letter.

It starts on the (plane line) just like a c.

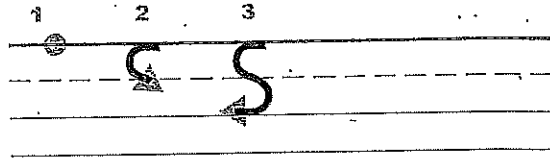
1 2 3



1. Point to the plane line.
2. Trace back and it curves in,
3. and goes back again and lands on the grass line.
4. Say s - snake - /s/; have students repeat.

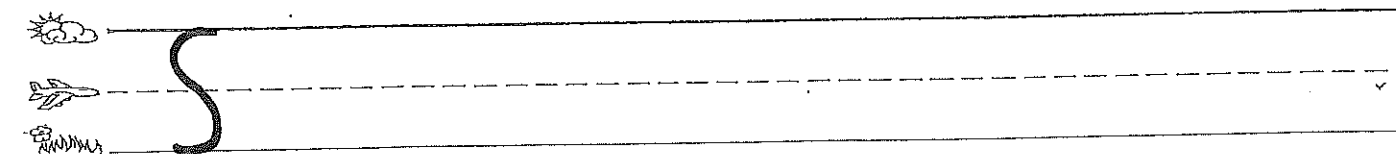
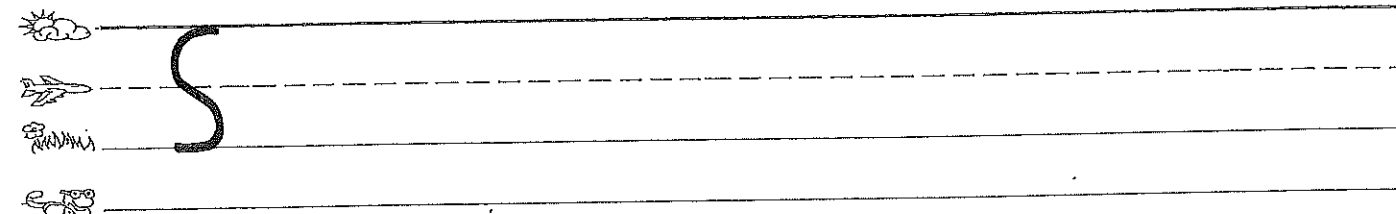
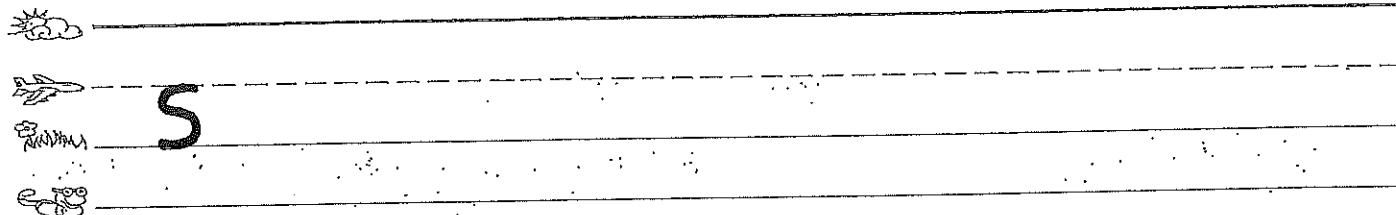
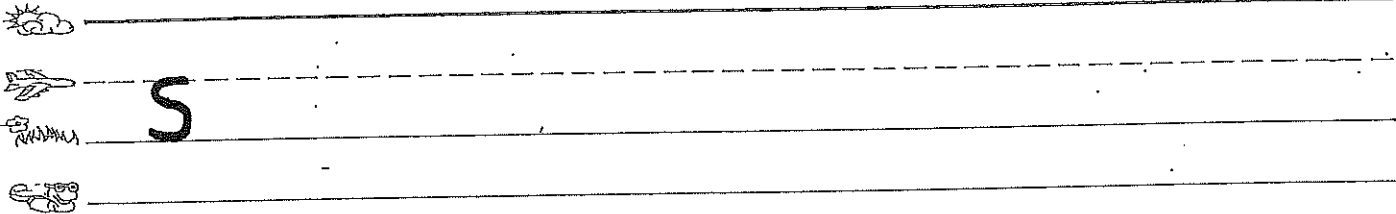
WILSON Foundations®

## Letter Formation for S



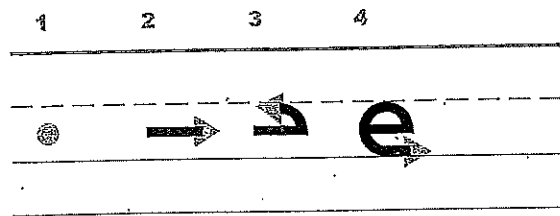
1. Point to the sky line.
2. Trace back and curve in to the plane line,
3. and curve back to the grass line.
4. Say s - snake - /s/; have students repeat.

WILSON Foundations®



## Letter Formation for e

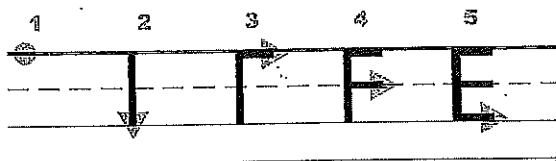
e is a plane line round letter, but it is special.  
e starts below the plane line.



1. Point between the plane line and the grass line.
2. Fly under the plane line.
3. Then go up to the plane line,
4. and around to the grass line.
5. Say e - Ed - /ë/; have students repeat.

WILSON Foundations®

## Letter Formation for E



1. Point to the sky line.
2. Go down to the grass line.
3. Make a line on the sky line.
4. Make a line on the plane line,
5. and a line on the grass line.
6. Say e - Ed - /ë/; have students repeat.

WILSON Foundations®



e



e



E



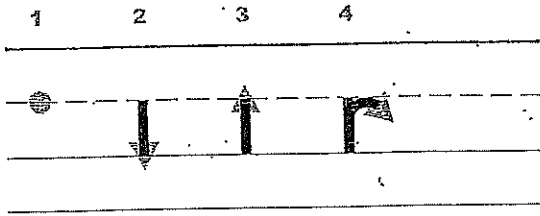
E



## Letter Formation for r

r is a plane line letter.

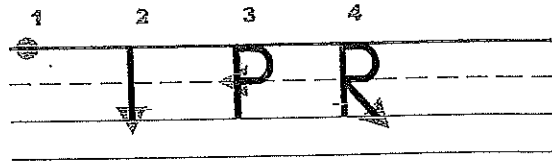
It starts on the (plane line).



1. Point to the plane line.
2. Go down to the grass line.
3. Trace back up to the plane line,
4. and make a little curve.
5. Say r - rat - /r/; have students repeat.

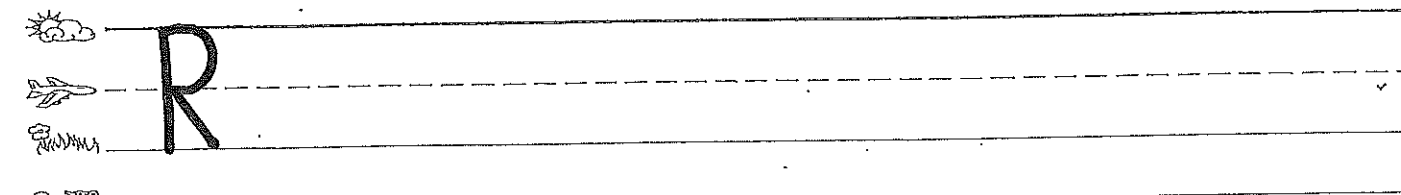
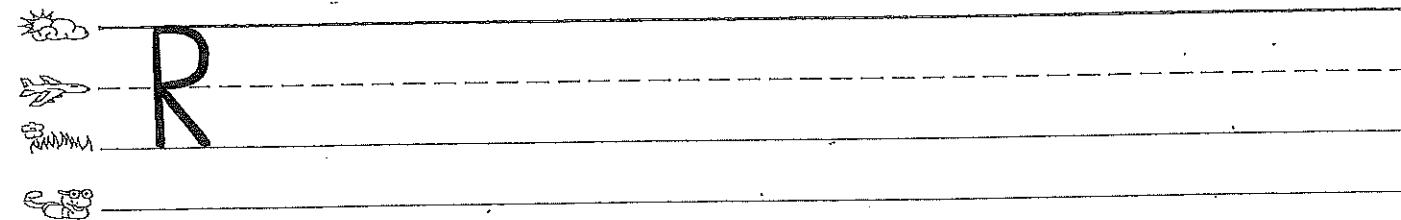
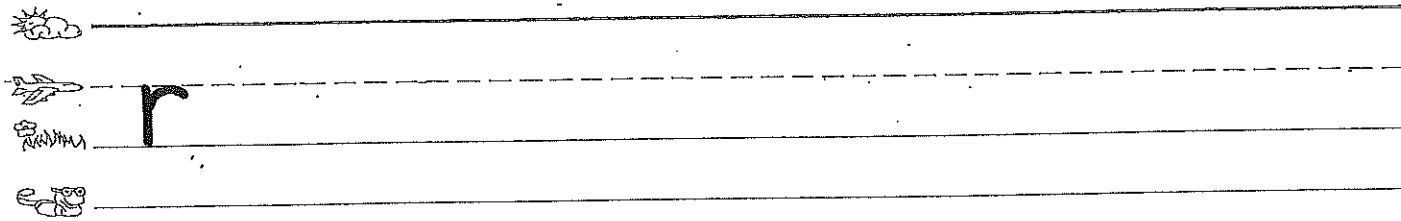
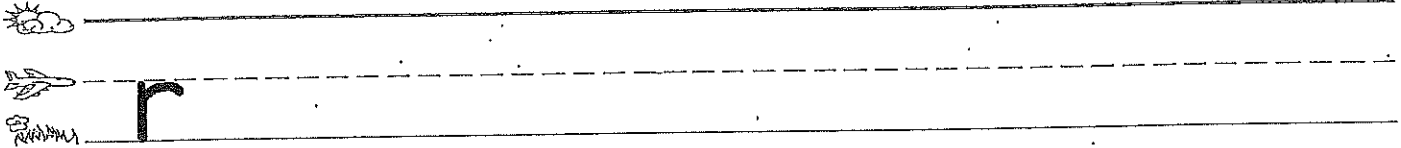
WILSON Foundations®

## Letter Formation for R



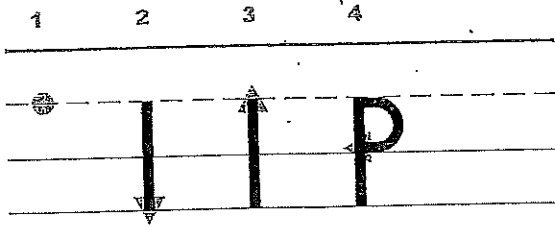
1. Point to the sky line.
2. Go down to the grass line.
3. Point to the sky line and go around to the plane line,
4. and slide down to the grass line.
5. Say r - rat - /r/; have students repeat.

WILSON Foundations®



## Letter Formation for p

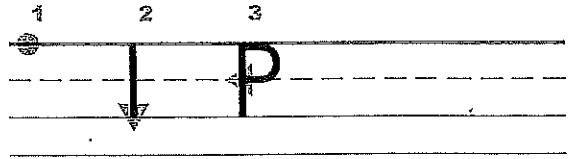
p is a plane line letter.  
It starts on the (plane line).



1. Point to the plane line.
2. Go down to the worm line.
3. Trace back up to the plane line,
4. and curve all the way around to the grass line.
5. Say p - pan - /p/; have students repeat.

WILSON Foundations®

## Letter Formation for P



1. Point to the sky line.
2. Go down to the grass line.
3. Point to the sky line and go around to the plane line.
4. Say p - pan - /p/; have students repeat.

WILSON Foundations®



P



P



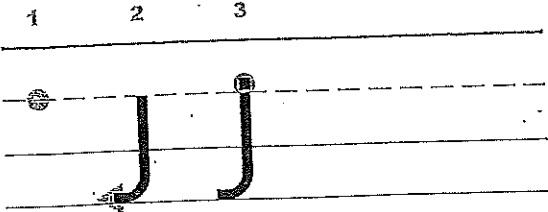
P



P

### Letter Formation for j

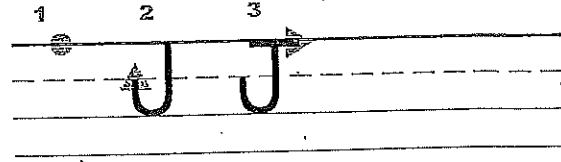
j is a plane line letter.  
It starts on the (plane line).



1. Point to the plane line.
2. Go all the way down to the worm line, and make a curve.
3. Add a dot.
4. Say j - jug - /j/; have students repeat.

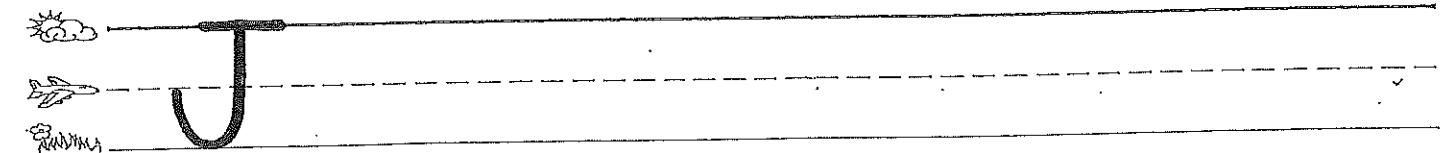
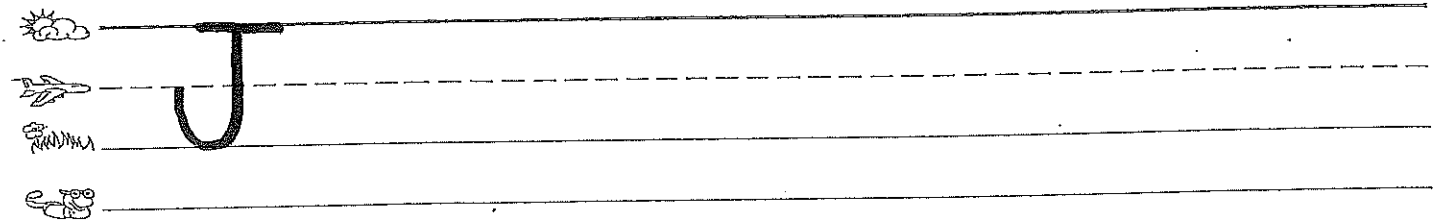
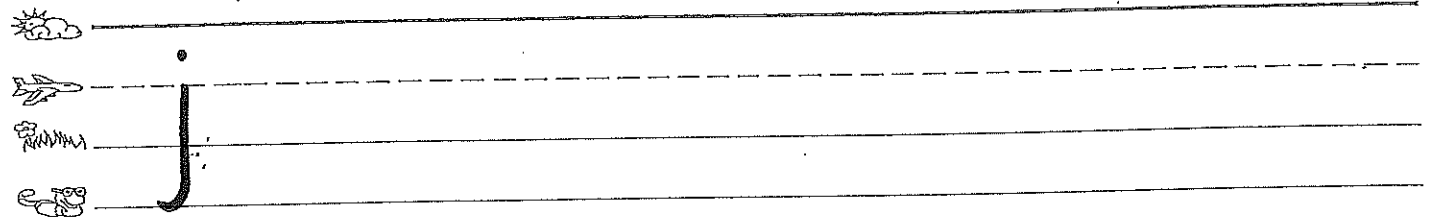
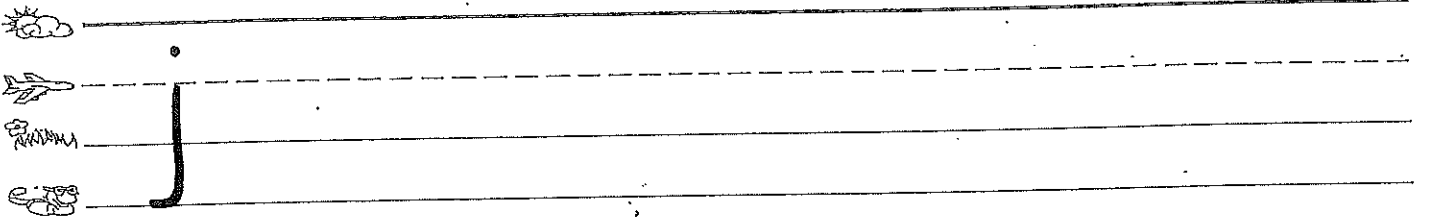
WILSON Foundations®

### Letter Formation for J



1. Point to the sky line.
2. Go down to the grass line and curve back.
3. Cross it on the sky line.
4. Say j - jug - /j/; have students repeat.

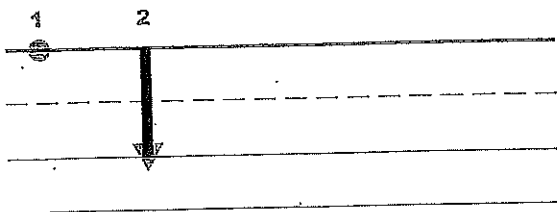
WILSON Foundations®



## Letter Formation for I

I is a sky line letter.

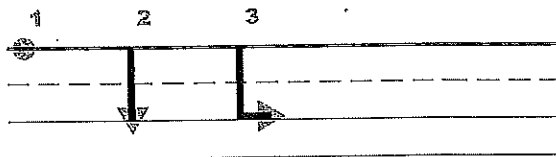
It starts on the (sky line).



1. Point to the sky line.
2. Go down to the grass line and stop.
3. Say I - lamp - //; have students repeat.

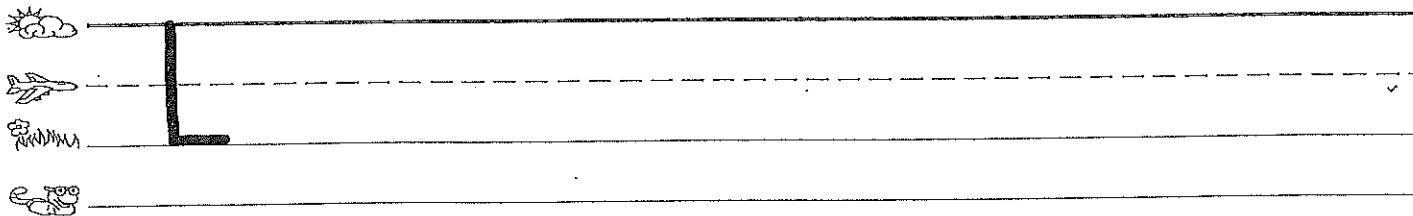
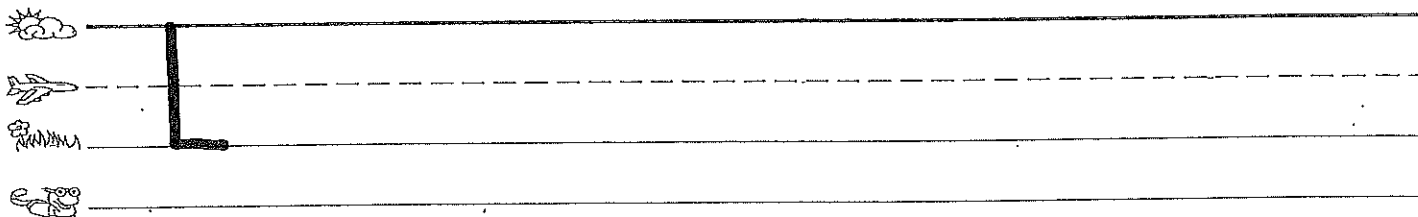
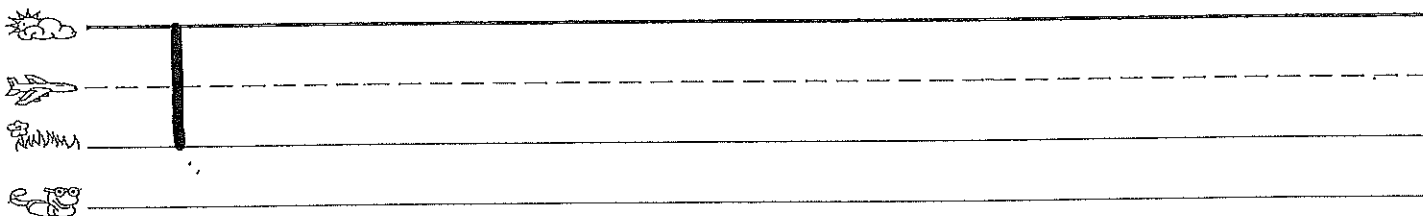
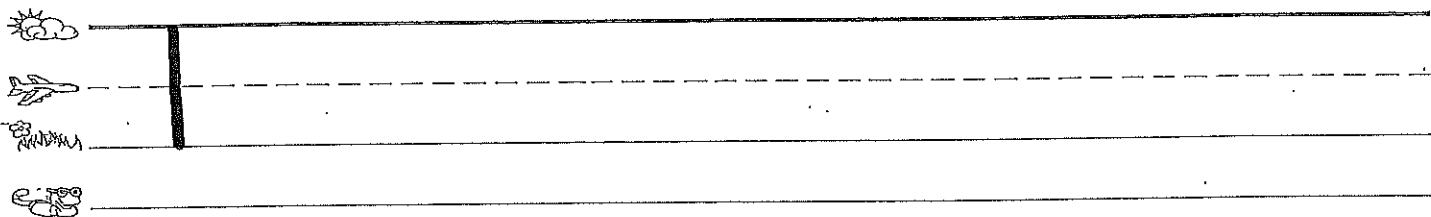
WILSON Foundations®

## Letter Formation for L



1. Point to the sky line.
2. Go down to the grass line.
3. Make a line across the grass line.
4. Say I - lamp - //; have students repeat.

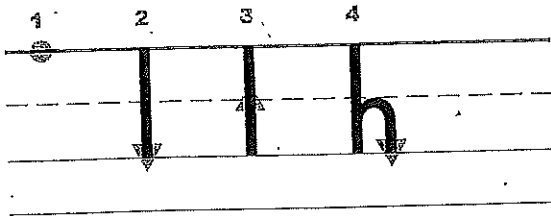
WILSON Foundations®



## Letter Formation for h

h is a sky line letter.

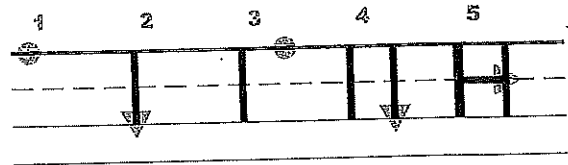
It starts on the (sky line).



1. Point to the sky line.
2. Go down to the grass line.
3. Trace back up to the plane line,
4. and make a hump.
5. Say h - hat - /h/; have students repeat.

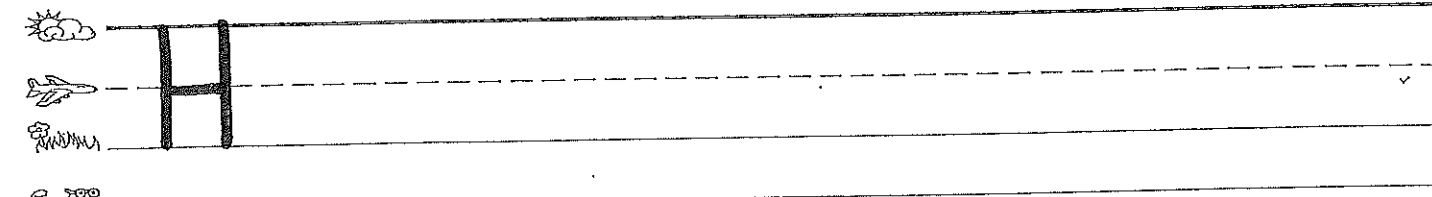
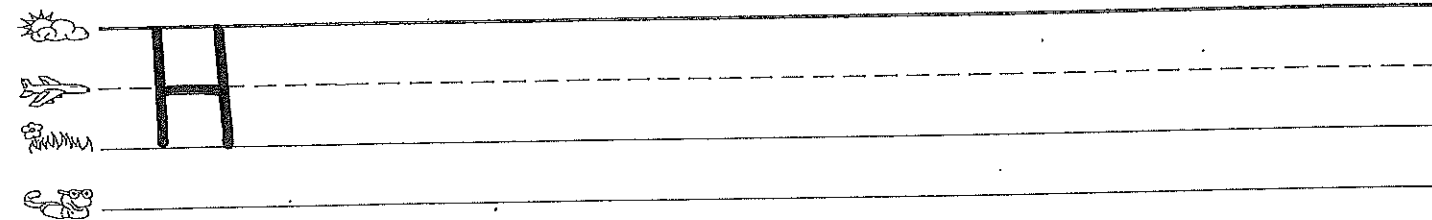
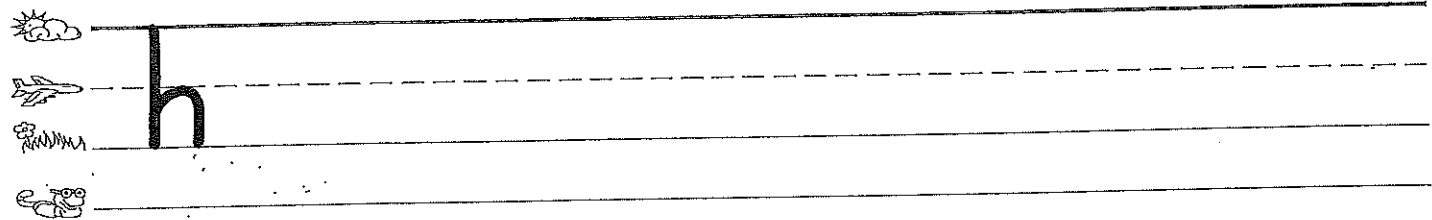
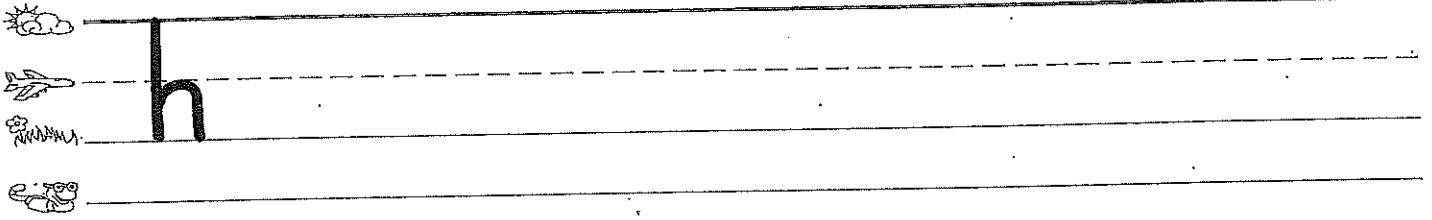
WILSON Foundations®

## Letter Formation for H



1. Point to the sky line.
2. Go down to the grass line.
3. Leave a space and point to the sky line.
4. Go down to the grass line.
5. Cross straight on the plane line.
6. Say h - hat - /h/; have students repeat.

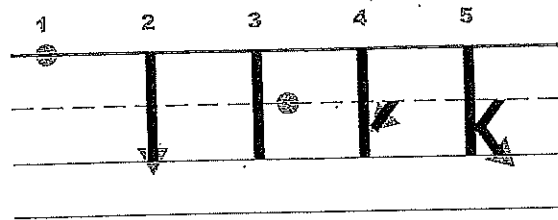
WILSON Foundations®



## Letter Formation for k

k is a sky line letter.

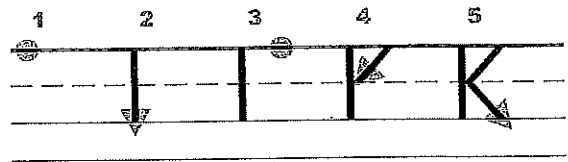
It starts on the (sky line).



1. Point to the sky line.
2. Go all the way down to the grass line.
3. Point to the plane line and leave a space.
4. Slide over and touch your tall line,
5. and slide back to the grass line.
6. Say k - kite - /k/; have students repeat.

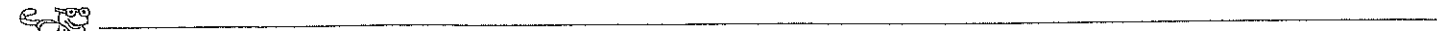
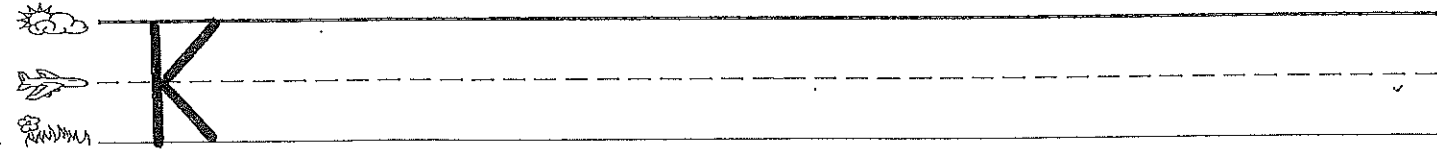
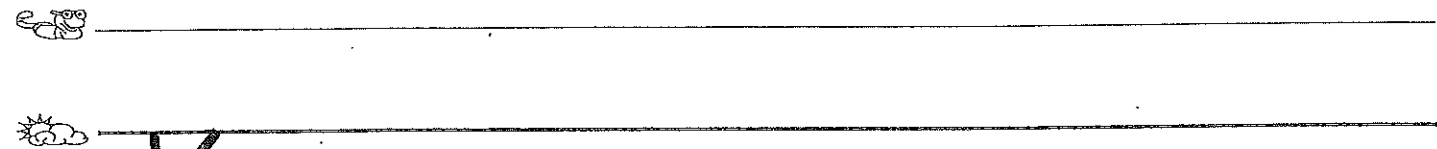
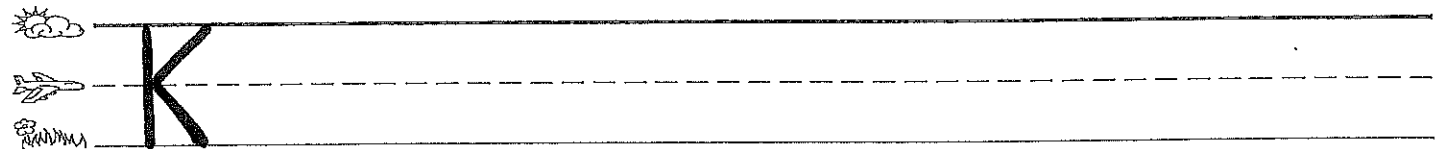
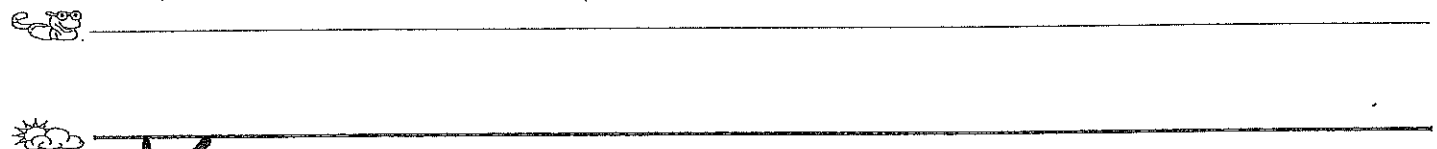
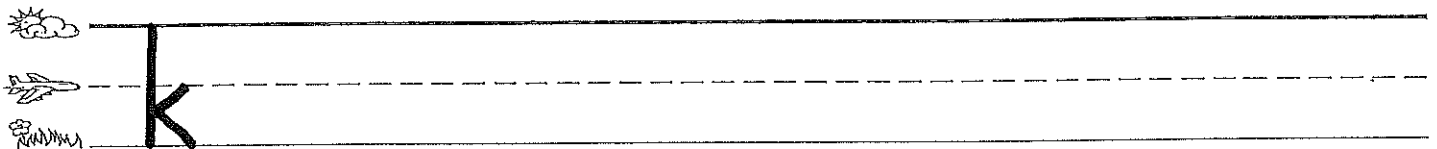
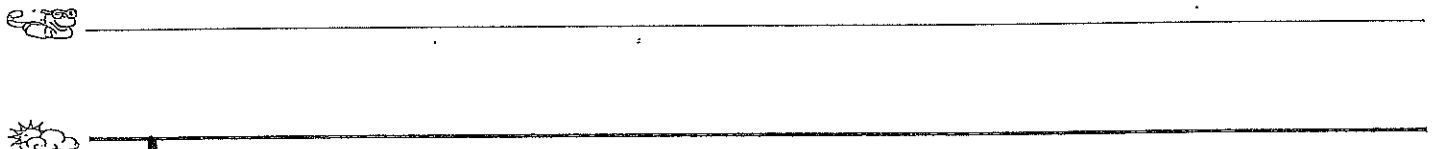
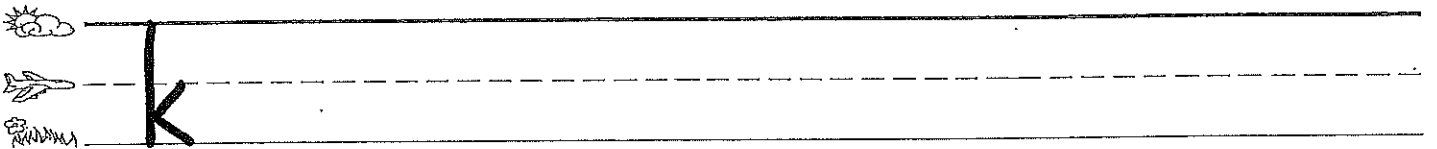
WILSON Foundations®

## Letter Formation for K



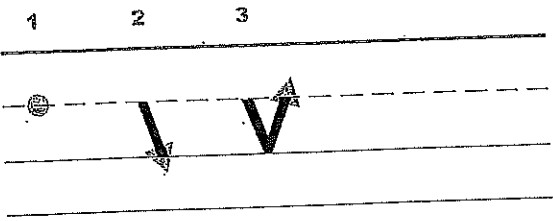
1. Point to the sky line.
2. Go down to the grass line.
3. Leave a space and point to the sky line.
4. Slide back to the plane line.
5. Slide over to the grass line.
6. Say k - kite - /k/; have students repeat.

WILSON Foundations®



## Letter Formation for V

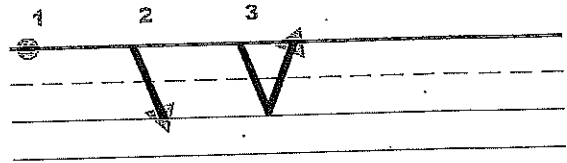
v is a plane line slide letter.  
It starts on the (plane line) and (slides).



1. Point to the plane line.
2. Slide down to the grass line.
3. Slide up to the plane line.
4. Say v - van - /v/; have students repeat.

WILSON Foundations®

## Letter Formation for V



1. Point to the sky line.
2. Slide down to the grass line,
3. and slide back up to the sky line.
4. Say v - van - /v/; have students repeat.

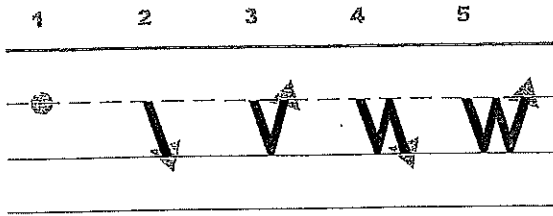
WILSON Foundations®



## Letter Formation for W

w is a plane line slide letter.

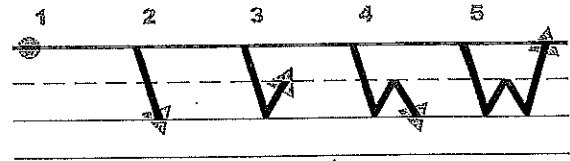
It starts on the (plane line) and (slides).



1. Point to the plane line.
2. Slide down to the grass line.
3. Slide up to the plane line.
4. Slide down to the grass line.
5. Slide up to the plane line.
6. Say w - wind - /w/; have students repeat.

WILSON Foundations®

## Letter Formation for W



1. Point to the sky line.
2. Slide down to the grass line.
3. Slide up to the plane line.
4. Back down to the grass line,
5. and slide all the way back to the sky line.
6. Say w - wind - /w/; have students repeat.

WILSON Foundations®



W



W



W



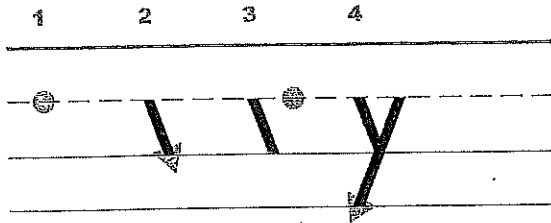
W



## Letter Formation for y

y is a plane line slide letter.

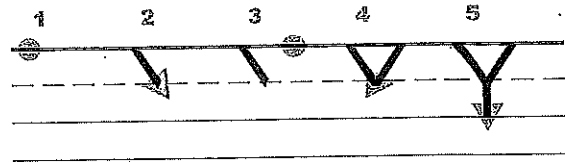
It starts on the (plane line) and (slides).



1. Point to the plane line.
2. Slide down to the grass line.
3. Pick up your pencil (finger) and leave a space and point to the plane line.
4. Slide back - all the way to the worm line.
5. Say y - yellow - /y/; have students repeat.

WILSON Foundations®

## Letter Formation for Y



1. Point to the sky line.
2. Slide down to the plane line.
3. Leave a space and point to the sky line,
4. and then slide back to the plane line.
5. Go straight down to the grass line.
6. Say y - yellow - /y/; have students repeat.

WILSON Foundations®



Y



Y



Y

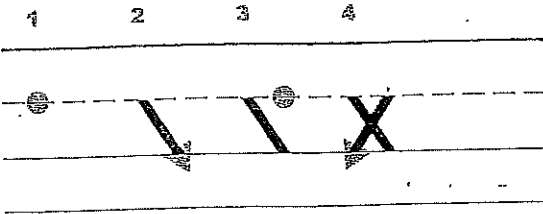


Y

## Letter Formation for X

x is a plane line slide letter.

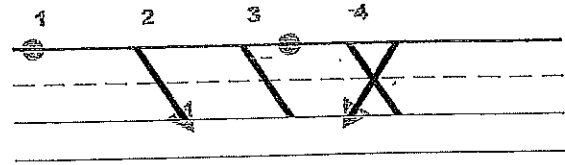
It starts on the (plane line) and (slides).



1. Point to the plane line.
2. Slide down to the grass line.
3. Leave a space and point to the plane line.
4. Slide back to the grass line.
5. Say x - fox - /ks/; have students repeat.

WILSON Foundations®

## Letter Formation for X



1. Point to the sky line.
2. Slide down to the grass line.
3. Leave a space and point to the sky line.
4. Slide back down to the grass line.
5. Say x - fox - /ks/; have students repeat.

WILSON Foundations®

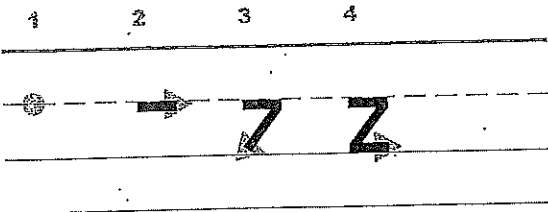


## Letter Formation for Z

z is a plane line slide letter, but it doesn't slide right away.

Where does it start? (On the plane line).

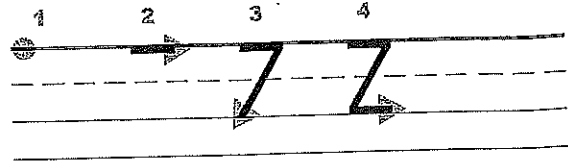
Before it slides, the z goes on the plane line.



1. Point to the plane line.
2. Go on the plane line.
3. Slide back to the grass line.
4. Then go on the grass line.
5. Say z - zebra - /z/; have students repeat.

WILSON Foundations®

## Letter Formation for Z



1. Point to the sky line.
2. Make a line.
3. Slide back to the grass line.
4. Make a line.
5. Say z - zebra - /z/; have students repeat.

WILSON Foundations®



Z



Z



Z



Z

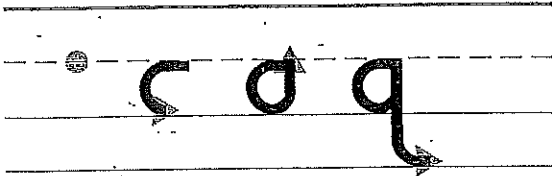
## Letter Formation for q

q is a plane line round letter.

It starts on the (plane line).

Remember that q is the buddy letter so in the end it wants to point up to its buddy, u.

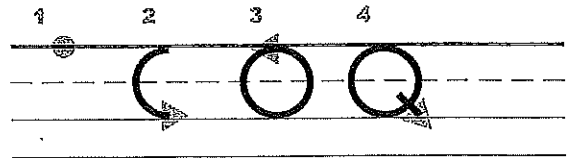
1            2            3            4



1. Point to the plane line.
2. Trace back and go down to the grass line round, back to the plane line.
3. Trace back down to the worm line, and point up to his "buddy" u.
5. Say qu - queen - /kw/; have students repeat.

WILSON Foundations®

## Letter Formation for Q



1. Point to the sky line.
2. Trace back, then down around to the grass line, and around back up to the sky line.
4. Make a tail.
5. Say qu - queen - /kw/; have students repeat.

WILSON Foundations®



q



q

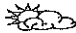

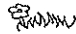
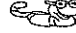






Q

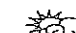
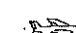








Q

Write all the lowercase letters in order.

 \_\_\_\_\_  
 \_\_\_\_\_  
 \_\_\_\_\_  
 \_\_\_\_\_

 \_\_\_\_\_  
 \_\_\_\_\_  
 \_\_\_\_\_  
 \_\_\_\_\_

 \_\_\_\_\_  
 \_\_\_\_\_  
 \_\_\_\_\_  
 \_\_\_\_\_

 \_\_\_\_\_  
 \_\_\_\_\_  
 \_\_\_\_\_  
 \_\_\_\_\_

Write all the capital letters in order.



\_\_\_\_\_



\_\_\_\_\_



\_\_\_\_\_



\_\_\_\_\_



\_\_\_\_\_



\_\_\_\_\_



\_\_\_\_\_



\_\_\_\_\_



\_\_\_\_\_



\_\_\_\_\_



\_\_\_\_\_



\_\_\_\_\_



\_\_\_\_\_



\_\_\_\_\_



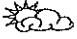


\_\_\_\_\_






\_\_\_\_\_




# Apostrophe



I'm



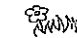


don't





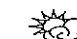
it's






wasn't



I'll



she's



doesn't

# Poem



Feelings

I'm seeing red,

I'm feeling blue,

I'm tickled pink,

And how are you?



# Copy the poem



# Dates



Jan. 1,



Feb. 2,



Mar. 3,



Apr. 4,



May 5,




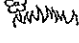
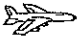
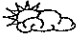
June 6,







July 7,







# Dates




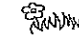


Aug. 8,







Sept. 9,






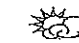
Oct. 10,



Nov. 11,




Dec. 12,




July 4, 1776




# Letter




July 1, 1974




Dear Beth,




Thank you for




taking me to Great



Adventure.



Your friend,




Nicky


# Copy the letter




# Quotations




"Can you swim?"




"Is it cold?"




"There's a shark!"




"Get out fast!"



"Swim in the pool?"




"Yes! Good idea!"



"Let's go!"

# Copy the quotations

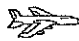
 \_\_\_\_\_

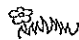
 \_\_\_\_\_

 \_\_\_\_\_

 \_\_\_\_\_


 \_\_\_\_\_


 \_\_\_\_\_


 \_\_\_\_\_

 \_\_\_\_\_


 \_\_\_\_\_

 \_\_\_\_\_

 \_\_\_\_\_

 \_\_\_\_\_

 \_\_\_\_\_

 \_\_\_\_\_

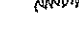
 \_\_\_\_\_

 \_\_\_\_\_

 \_\_\_\_\_

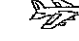
 \_\_\_\_\_


 \_\_\_\_\_


 \_\_\_\_\_

 \_\_\_\_\_

 \_\_\_\_\_


 \_\_\_\_\_

 \_\_\_\_\_

 \_\_\_\_\_


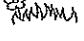

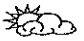
 \_\_\_\_\_

 \_\_\_\_\_


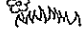


 \_\_\_\_\_

 \_\_\_\_\_


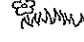


# Compound words




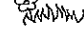
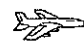

lady + bug




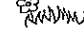


foot + ball




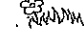


cat + nap




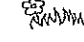

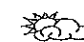
hand + bag



book + case




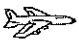
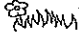

lap + top

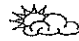
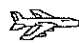



mail + box



Did you know?

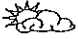
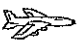

    Kangaroos cannot




   walk backward.



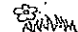





Some fish cough.




# Did you know?

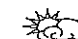


  
  
 Parkview School

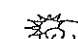


  
  
 opened in 1960.

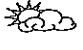
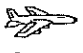
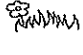
  
  


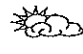

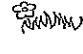
  
  
 Only mammals snore.

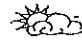

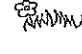
  
  


# Did you know?

   Snails can nap for

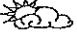

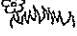
   three years.


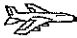





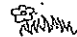
   Apples float on water.


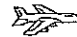






Did you know?


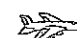

  
  
  
Tigers have




  
  
  
striped skin, not

  
  
  
just striped fur.


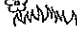
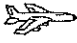
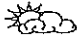
# Did you know?

Applesauce was the


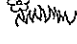

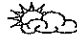
first food eaten in

space by astronauts.




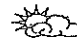
# Paragraph




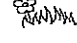
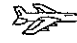

The equator is like




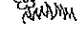

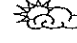
a belt around the







middle of the Earth.




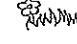


It's not a real line.



It divides the



North from the

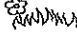
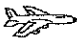



South.



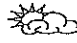
# Copy the paragraph





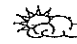
# Paragraph



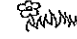

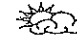
The cheetah is






a big cat. It is




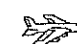

the fastest land



animal in the world.



A cheetah can run



75 miles per hour.



# Copy the paragraph



