

1) $(-81) - 33 =$

- A. 48
- B. -48
- C. -114
- D. 114

6) Eric bought a 10 oz bottle of cough syrup. If each dose is $\frac{1}{4}$ oz, how many doses are in the bottle?

2) A submarine dives 512 feet below the surface of the ocean. It later climbs up 224 feet. How far beneath the surface is it now?

7) It costs a bakery \$0.90 to make one banana nut muffin. A bakery marks up its muffins by 40%. What is the final price of the muffin?

3) Add: $-8.7 + 55.33$

- A. 64.03
- B. 46.63
- C. 56.63
- D. 44.63

8) Jolene bought a 10 pound sack of flour. She used $3\frac{3}{4}$ pounds of flour to make bread. How much flour did she have left?

4) Solve: $0.012 - \frac{1}{5}$

- A. -0.488
- B. 0.488
- C. -0.188
- D. 0.188

9) Simplify.

$$4a + 5 - a - 2 + a + 2a^2$$

5) Which equation is true?

- A. $\frac{1}{2} = -\left(\frac{-1}{-2}\right)$
- B. $\frac{-2}{-3} = -\frac{2}{3}$
- C. $-\left(\frac{3}{-4}\right) = \frac{3}{4}$
- D. $\frac{7}{-12} = -\left(\frac{-7}{12}\right)$

10) Solve: $-(-14) - 7\frac{3}{8}$

- A. $21\frac{3}{8}$
- B. $-21\frac{3}{8}$
- C. $-6\frac{5}{8}$
- D. $6\frac{5}{8}$

Name _____

Date _____

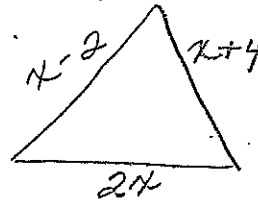
11

What is 86% of 200?

- A. 172
- B. 86
- C. 286
- D. 114

16

Write the perimeter as a simplified expression.



17

The fraction $\frac{5}{8}$ can be expressed as:
(Select all that apply.)

- A. 0.625
- B. $\frac{10}{24}$
- C. 16%
- D. 62.5%

12

$$7.2 \times -\frac{1}{5}$$

18

$$-\frac{3}{4} \times 6.2$$

13

A pair of sunglasses costs \$14.50 to manufacture and is marked up by 32%.
What is the selling price of the sunglasses?

14

$$23 \div -1\frac{1}{4}$$

19

As a freshman Ricki played in 8 soccer games. As a senior he played in all 12 games. What was the percent increase from his freshman to his senior year?

20

A family of four went out for dinner. The bill before tax was \$43.00. A sales tax of 6% was then added. A tip of 20% was then added on after the sales tax was added. What was the total cost for dinner?

21

Using the formula $I = PRT$, how much interest will you pay on a loan for \$5,000 at 7% interest for 2 years?

- A. \$350
- B. \$700
- C. \$140
- D. \$190