

# Unit 5: Community

Content Area: **ELA**  
Course(s): **ELA AP LA&C**  
Time Period: **January**  
Length: **15 days, Grade 11**  
Status: **Published**

## **Title Section**

---

## **Department of Curriculum and Instruction**



**Belleville Public Schools**

**Curriculum Guide**

**AP Language and Composition, Grade 11**

**Unit 5: Community**

**Belleville Board of Education**

**102 Passaic Avenue**

**Belleville, NJ 07109**

**Prepared by:** Mrs. Danielle Santosusso

Dr. Richard Tomko, Ph.D., M.J., Superintendent of Schools

Ms. LucyAnn Demikoff, Director of Curriculum and Instruction K-12

Ms. Nicole Shanklin, Director of Elementary Education

Mr. George Droste, Director of Secondary Education

Board Approved: September 23, 2019

## **Unit Overview**

---

Students will read both literary and informational texts and view visuals to develop ideas about the idea of community and their roles in said community. Students will write a variety of essays regarding their claims and apply different modes of rhetoric to reading, viewing, and writing to persuade and influence.

## **Enduring Understanding**

---

Individuals belong to many different communities over the course of their lives.

## Essential Questions

---

What is the relationship of the individual to the community?

Do we control our communities or do they control us?

## Exit Skills

---

By the end of Unit 5: Community, student will be able to:

- Continue developing academic vocabulary
- Apply and analyze classical models of rhetoric and Toulmin's Argumentation Model
- Develop and establish a claim using persuasive modes and manipulative rhetorical fallacies.

## New Jersey Student Learning Standards (NJSL-S)

---

LA.RL.11-12.1	Cite strong and thorough textual evidence and make relevant connections to support analysis of what the text says explicitly as well as inferences drawn from the text, including determining where the text leaves matters uncertain.
LA.RL.11-12.2	Determine two or more themes or central ideas of a text and analyze their development over the course of the text, including how they interact and build on one another to produce a complex account; provide an objective summary of the text.
LA.RL.11-12.3	Analyze the impact of the author's choices regarding how to develop and relate elements of a story or drama (e.g., where a story is set, how the action is ordered, how the characters are introduced and developed).
LA.RL.11-12.4	Determine the meaning of words and phrases as they are used in the text, including figurative and connotative meanings; analyze the impact of specific word choices on meaning and tone, including words with multiple meanings or language that is particularly fresh, engaging, or beautiful. (e.g., Shakespeare as well as other authors.)
LA.RL.11-12.5	Analyze how an author's choices concerning how to structure specific parts of a text (e.g., the choice of where to begin or end a story, the choice to provide a comedic or tragic resolution) contribute to its overall structure and meaning as well as its aesthetic impact.
LA.RL.11-12.6	Analyze a case in which grasping a point of view requires distinguishing what is directly stated in a text from what is really meant (e.g., satire, sarcasm, irony, or understatement).
LA.RL.11-12.7	Analyze multiple interpretations of a story, drama, or poem (e.g., recorded or live

production of a play or recorded novel or poetry), evaluating how each version interprets the source text. (e.g., Shakespeare and other authors.)

LA.RL.11-12.9	Demonstrate knowledge of and reflect on (e.g., practical knowledge, historical/cultural context, and background knowledge) eighteenth-, nineteenth- and early twentieth-century foundational works of literature, including how two or more texts from the same period treat similar themes or topics.
LA.RI.11-12.1	Accurately cite strong and thorough textual evidence, (e.g., via discussion, written response, etc.), to support analysis of what the text says explicitly as well as inferentially, including determining where the text leaves matters uncertain.
LA.RI.11-12.2	Determine two or more central ideas of a text, and analyze their development and how they interact to provide a complex analysis; provide an objective summary of the text.
LA.RI.11-12.3	Analyze a complex set of ideas or sequence of events and explain how specific individuals, ideas, or events interact and develop over the course of the text.
LA.RI.11-12.4	Determine the meaning of words and phrases as they are used in a text, including figurative, connotative, and technical meanings; analyze how an author uses and refines the meaning of a key term or terms over the course of a text (e.g., how Madison defines faction in Federalist No. 10).
LA.RI.11-12.5	Analyze and evaluate the effectiveness of the structure an author uses in his or her exposition or argument, including whether the structure makes points clear, convincing, and engaging.
LA.RI.11-12.6	Determine an author's point of view or purpose in a text in which the rhetoric is particularly effective, analyzing how style and content contribute to the power, persuasiveness or beauty of the text.
LA.RI.11-12.7	Integrate and evaluate multiple sources of information presented in different media or formats (e.g., visually, quantitatively) as well as in words in order to address a question or solve a problem.
LA.RI.11-12.8	Describe and evaluate the reasoning in seminal U.S. and global texts, including the application of constitutional principles and use of legal reasoning (e.g., in U.S. Supreme Court majority opinions and dissents) and the premises, purposes, and arguments in works of public advocacy (e.g., The Federalist, presidential addresses).
LA.RI.11-12.9	Analyze and reflect on (e.g., practical knowledge, historical/cultural context, and background knowledge) documents of historical and literary significance for their themes, purposes and rhetorical features, including primary source documents relevant to U.S. and/or global history.
LA.W.11-12.1	Write arguments to support claims in an analysis of substantive topics or texts, using valid reasoning and relevant and sufficient evidence.
LA.W.11-12.2	Write informative/explanatory texts to examine and convey complex ideas, concepts, and information clearly and accurately through the effective selection, organization, and analysis of content.
LA.W.11-12.3	Write narratives to develop real or imagined experiences or events using effective technique, well-chosen details, and well-structured event sequences.
LA.W.11-12.4	Produce clear and coherent writing in which the development, organization, and style are appropriate to task, purpose, and audience. (Grade-specific expectations for writing types are defined in standards 1–3 above.)
LA.W.11-12.5	Develop and strengthen writing as needed by planning, revising, editing, rewriting, trying a new approach, or consulting a style manual (such as MLA or APA Style), focusing on addressing what is most significant for a specific purpose and audience.
LA.W.11-12.6	Use technology, including the Internet, to produce, share, and update individual or shared writing products in response to ongoing feedback, including new arguments or information.

LA.W.11-12.7	Conduct short as well as more sustained research projects to answer a question (including a self-generated question) or solve a problem; narrow or broaden the inquiry when appropriate; synthesize multiple sources on the subject, demonstrating understanding of the subject under investigation.
LA.W.11-12.8	Gather relevant information from multiple authoritative print and digital sources, using advanced searches effectively; assess the strengths and limitations of each source in terms of the task, purpose, and audience; integrate information into the text selectively to maintain the flow of ideas, avoiding plagiarism and overreliance on any one source and following a standard format for citation. (MLA or APA Style Manuals).
LA.W.11-12.9	Draw evidence from literary or informational texts to support analysis, reflection, and research.
LA.SL.11-12.1	Initiate and participate effectively in a range of collaborative discussions (one-on-one, in groups, and teacher-led) with peers on grades 11–12 topics, texts, and issues, building on others' ideas and expressing their own clearly and persuasively.
LA.SL.11-12.2	Integrate multiple sources of information presented in diverse media or formats (e.g., visually, quantitatively, qualitatively, orally) evaluating the credibility and accuracy of each source.
LA.SL.11-12.3	Evaluate a speaker's point of view, reasoning, and use of evidence and rhetoric, assessing the stance, premises, links among ideas, word choice, points of emphasis, and tone used.
LA.SL.11-12.4	Present information, findings and supporting evidence clearly, concisely, and logically. The content, organization, development, and style are appropriate to task, purpose, and audience.
LA.SL.11-12.5	Make strategic use of digital media (e.g., textual, graphical, audio, visual, and interactive elements) in presentations to enhance understanding of findings, reasoning, and evidence and to add interest.
LA.SL.11-12.6	Adapt speech to a variety of contexts and tasks, demonstrating a command of formal English when indicated or appropriate.
LA.L.11-12.1	Demonstrate command of the conventions of standard English grammar and usage when writing or speaking.
LA.L.11-12.2	Demonstrate command of the conventions of standard English capitalization, punctuation, and spelling when writing.
LA.L.11-12.3	Apply knowledge of language to understand how language functions in different contexts, to make effective choices for meaning or style, and to comprehend more fully when reading or listening.
LA.L.11-12.4	Determine or clarify the meaning of unknown and multiple-meaning words and phrases based on grades 11–12 reading and content, choosing flexibly from a range of strategies.
LA.L.11-12.5	Demonstrate understanding of figurative language, word relationships, and nuances in word meanings.
LA.L.11-12.6	Acquire and use accurately general academic and domain-specific words and phrases, sufficient for reading, writing, speaking, and listening at the college and career readiness level; demonstrate independence in gathering vocabulary knowledge when considering a word or phrase important to comprehension or expression.
LA.11-12.SL.11-12.2	Integrate multiple sources of information presented in diverse formats and media (e.g., visually, quantitatively, orally) in order to make informed decisions and solve problems, evaluating the credibility and accuracy of each source and noting any discrepancies among the data.

---

## Interdisciplinary Connections

CRP.K-12.CRP1.1	Career-ready individuals understand the obligations and responsibilities of being a member of a community, and they demonstrate this understanding every day through their interactions with others. They are conscientious of the impacts of their decisions on others and the environment around them. They think about the near-term and long-term consequences of their actions and seek to act in ways that contribute to the betterment of their teams, families, community and workplace. They are reliable and consistent in going beyond the minimum expectation and in participating in activities that serve the greater good.
CRP.K-12.CRP5.1	Career-ready individuals understand the interrelated nature of their actions and regularly make decisions that positively impact and/or mitigate negative impact on other people, organization, and the environment. They are aware of and utilize new technologies, understandings, procedures, materials, and regulations affecting the nature of their work as it relates to the impact on the social condition, the environment and the profitability of the organization.
CRP.K-12.CRP11.1	Career-ready individuals find and maximize the productive value of existing and new technology to accomplish workplace tasks and solve workplace problems. They are flexible and adaptive in acquiring new technology. They are proficient with ubiquitous technology applications. They understand the inherent risks-personal and organizational-of technology applications, and they take actions to prevent or mitigate these risks.
SOC.6.1.12.A.1.b	Analyze how gender, property ownership, religion, and legal status affected political rights.
SOC.6.1.12.D.2.d	Analyze arguments for new women's roles and rights, and explain why 18th-century society limited women's aspirations.
SOC.6.1.12.D.2.e	Determine the impact of African American leaders and institutions in shaping free Black communities in the North.
CAEP.9.2.12.C.4	Analyze how economic conditions and societal changes influence employment trends and future education.
TECH.8.1.12.A.1	Create a personal digital portfolio which reflects personal and academic interests, achievements, and career aspirations by using a variety of digital tools and resources.
TECH.8.1.12.A.3	Collaborate in online courses, learning communities, social networks or virtual worlds to discuss a resolution to a problem or issue.

## Learning Objectives

---

- Apply and analyze classical models of rhetoric: logos, pathos, ethos
- Learn Toulmin's argumentation model and apply it to sample texts
- Learn and apply rhetorical figures in writing
- Learn the conventions of the persuasive mode
- Develop an argument and establish a claim
- Explore sentence structure and parallel construction in good writing

- Learn common rhetorical fallacies used to convince and manipulate

**Action Verbs:** Below are examples of action verbs associated with each level of the Revised Bloom's Taxonomy.

Remember	Understand	Apply	Analyze	Evaluate	Create
Choose Describe Define Label List Locate Match Memorize Name Omit Recite Select State Count Draw Outline Point Quote Recall Recognize Repeat Reproduce	Classify Defend Demonstrate Distinguish Explain Express Extend Give Examples Illustrate Indicate Interrelate Interpret Infer Match Paraphrase Represent Restate Rewrite Select Show Summarize Tell Translate Associate Compute Convert Discuss Estimate Extrapolate Generalize Predict	Choose Dramatize Explain Generalize Judge Organize Paint Prepare Produce Select Show Sketch Solve Use Add Calculate Change Classify Complete Compute Discover Divide Examine Graph Interpolate Manipulate Modify Operate Subtract	Categorize Classify Compare Differentiate Distinguish Identify Infer Point out Select Subdivide Survey Arrange Breakdown Combine Detect Diagram Discriminate Illustrate Outline Point out Separate	Appraise Judge Criticize Defend Compare Assess Conclude Contrast Critique Determine Grade Justify Measure Rank Rate Support Test	Combine Compose Construct Design Develop Formulate Hypothesize Invent Make Originate Organize Plan Produce Role Play Drive Devise Generate Integrate Prescribe Propose Reconstruct Revise Rewrite Transform



### **Suggested Activities & Best Practices**

---

- Each student will answer the unit's essential question(s) via Blogger on the class website before the unit begins. After the unit is completed, students will comment on their peer's post referencing material discussed during the unit. This will promote student interaction outside of the classroom as well as assist student's participation skills in the 21st century.
- Each student will examine their role in their own various communities as well as characteristics of that role. After reading *The Crucible* and *The Scarlet Letter*, students will examine their own roles in society and produce an argumentative essay in which the role of society and the individual is examined in detail.



## **Assessment Evidence - Checking for Understanding (CFU)**

---

Blog responses to Essential Question: - alternative assessment

What is the relationship of the individual to the community?

Do we control our communities or do they control us?

Peer comments after the unit on Essential Questions Blogs. - formative assessment

AP Style Multiple Choice Practice Questions from Albert.io - summative assessment

Socratic Seminars - formative assessment

Synthesis essays - summative assessment

- Admit Tickets
- Anticipation Guide
- Common Benchmarks
- Compare & Contrast
- Create a Multimedia Poster
- DBQ's
- Define
- Describe
- Evaluate
- Evaluation rubrics
- Exit Tickets
- Explaining
- Fist- to-Five or Thumb-Ometer
- Illustration
- Journals
- KWL Chart
- Learning Center Activities
- Multimedia Reports
- Newspaper Headline
- Outline
- Question Stems
- Quickwrite
- Quizzes
- Red Light, Green Light
- Self- assessments
- Socratic Seminar
- Study Guide
- Surveys
- Teacher Observation Checklist

- Think, Pair, Share
- Think, Write, Pair, Share
- Top 10 List
- Unit review/Test prep
- Unit tests
- Web-Based Assessments
- Written Reports

## **Primary Resources & Materials**

---

- Sadlier-Oxford Vocabulary Level H
- *The Scarlet Letter*, Nathaniel Hawthorne (novel)
- *The Crucible*, Arthur Miller (drama)
- From *The Language of Composition*, 3<sup>rd</sup> ed., Shea, *et al* — “Letter from Birmingham Jail,” Martin Luther King Jr.; “Where I Lived, and What I Lived for,” Henry David Thoreau; “All Happy Clans are Alike: In Search of the Good Family,” Jane Howard; “Commencement Speech at Mount Holyoke,” Anna Quindlen; “Walking the Path Between Worlds,” Lori Arviso Alvord

## **Ancillary Resources**

---

- “Reflections,” Lee Teter (painting/visual text).
- “Three Servicemen,” Frederick Hart (sculpture/visual text).
- “Child of the Americas,” Aurora Levins Morales (poem)
- “Witness” (film)

## **Technology Infusion**

---

Google Classroom

Google Website

Blogger

Google Docs

Google Slides

Screencastify

Other technology infusions are used at the teacher's discretion.

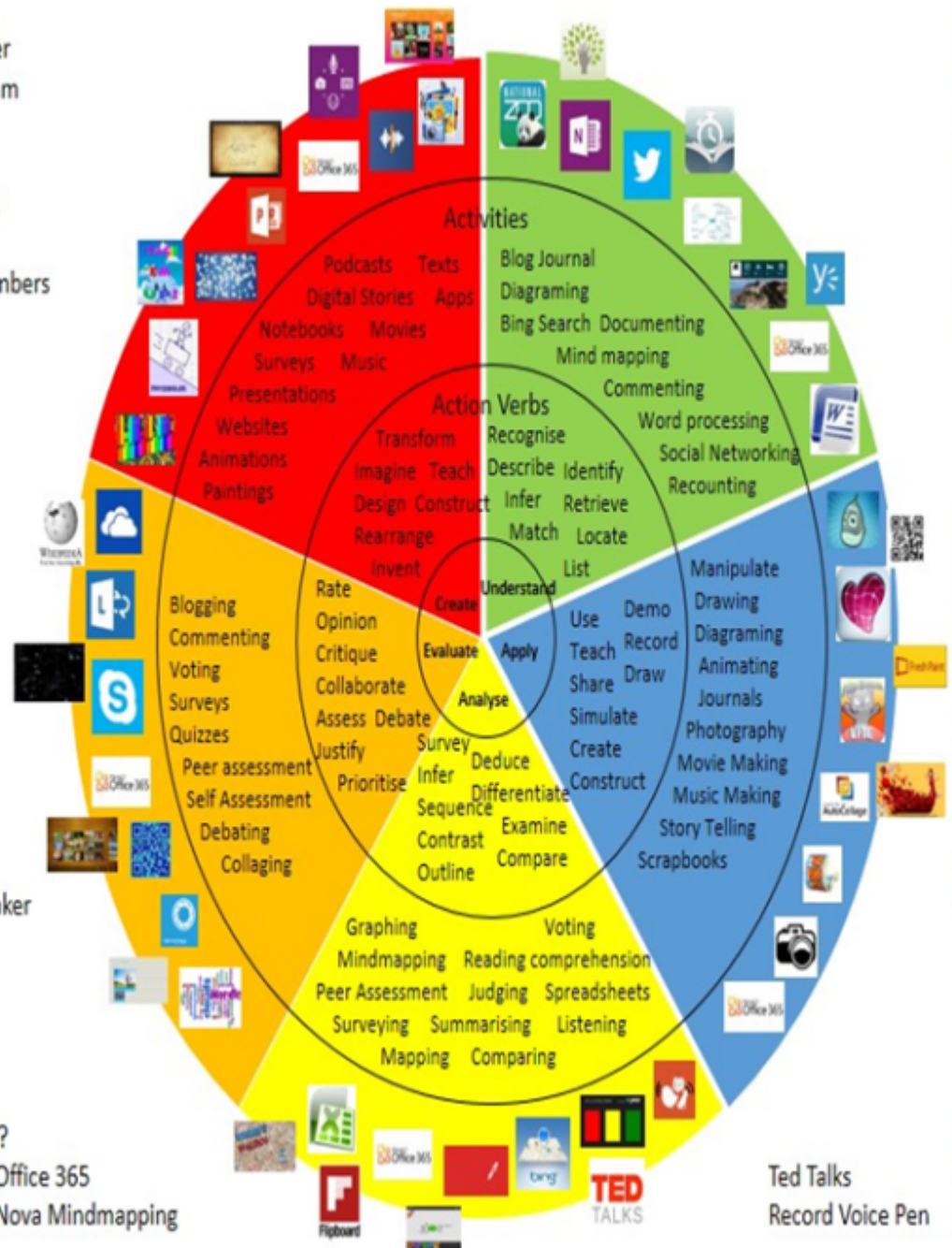
## Win 8.1 Apps/Tools Pedagogy Wheel

Podcasts  
Photostory 3  
Kid Story Builder  
Music Maker Jam  
Paint A Story  
Office 365  
MS PowerPoint  
Stack 'Em Up  
NqSquared Numbers  
Physamajig  
Xylophone 8

Wikipedia  
Skydrive  
Lync  
SkyMap  
Skype  
Office 365  
Puzzle Touch  
Easy QR  
Memorylage  
Life Moments  
Word Cloud Maker

Where's Waldo?  
MS Excel  
Flipboard  
Office 365  
Nova Mindmapping

Ted Talks  
Record Voice Pen



Originally taken from <http://www.coetail.com/vzimmer/files/2013/02/IPadagogy-Wheel.001.jpg>  
And adapted for Windows 8.1 devices by Charlotte Beckhurst @CharBeckhurst

## **Alignment to 21st Century Skills & Technology**

---

### 21st Century Skills & Technology:

- English Language Arts;
- Mathematics;
- Social Studies, including American History, World History, Geography, Government and Civics, and Economics;
- World languages;
- Technology;
- Visual and Performing Arts.

CRP.K-12.CRP1	Act as a responsible and contributing citizen and employee.
CRP.K-12.CRP2	Apply appropriate academic and technical skills.
CRP.K-12.CRP4	Communicate clearly and effectively and with reason.
CRP.K-12.CRP6	Demonstrate creativity and innovation.
CRP.K-12.CRP7	Employ valid and reliable research strategies.
CRP.K-12.CRP8	Utilize critical thinking to make sense of problems and persevere in solving them.
CRP.K-12.CRP9	Model integrity, ethical leadership and effective management.
CRP.K-12.CRP12	Work productively in teams while using cultural global competence.
TECH.8.1.12	Educational Technology: All students will use digital tools to access, manage, evaluate, and synthesize information in order to solve problems individually and collaborate and to create and communicate knowledge.
TECH.8.1.12.B	Creativity and Innovation: Students demonstrate creative thinking, construct knowledge and develop innovative products and process using technology.

## **21st Century Skills/Interdisciplinary Themes**

---

- Communication and Collaboration
- Creativity and Innovation
- Critical thinking and Problem Solving
- ICT (Information, Communications and Technology) Literacy

- Information Literacy
- Media Literacy

## **21st Century Skills**

---

- Civic Literacy
- Global Awareness
- Health Literacy

## **Differentiation**

---

Differentiations:

- Extra time to complete assignments
- Repeat directions in class and on teacher website
- Preview Vocabulary on teacher website

Hi-Prep Differentiations:

- Leveled rubric (student made)
- Literature Circles/Socratic Seminar

Lo-Prep Differentiations

- Flexible grouping/seating among classmates
- Think-Pair-Share Online Blog entries

## **Special Education Learning (IEP's & 504's)**

---

- Provide modifications in workload and extended time as specified in the student's IEP/504 plan
  - Allow extra time for online blog submissions
  - Allow student to preview the material via teacher website

- Use of computer or electronic device during class to follow lesson, take notes, refer to HW for discussion
- Modeled AP essays and multiple choice questions with discussions for student retention.

- printed copy of board work/notes provided
- additional time for skill mastery
- assistive technology
- behavior management plan
- Center-Based Instruction
- check work frequently for understanding
- computer or electronic device utilizes
- extended time on tests/ quizzes
- have student repeat directions to check for understanding
- highlighted text visual presentation
- modified assignment format
- modified test content
- modified test format
- modified test length
- multi-sensory presentation
- multiple test sessions
- preferential seating
- preview of content, concepts, and vocabulary
- Provide modifications as dictated in the student's IEP/504 plan
- reduced/shortened reading assignments
- Reduced/shortened written assignments
- secure attention before giving instruction/directions
- shortened assignments
- student working with an assigned partner
- teacher initiated weekly assignment sheet
- Use open book, study guides, test prototypes

### **English Language Learning (ELL)**

---

- Allow for shorter blog and homework responses

- Use of Youtube videos and Screencasts of lessons for student retention and clarification of material located on teacher's website.

- teaching key aspects of a topic. Eliminate nonessential information
- using videos, illustrations, pictures, and drawings to explain or clarify
- allowing products (projects, timelines, demonstrations, models, drawings, dioramas, poster boards, charts, graphs, slide shows, videos, etc.) to demonstrate student's learning;
- allowing students to correct errors (looking for understanding)
- allowing the use of note cards or open-book during testing
- decreasing the amount of work presented or required
- having peers take notes or providing a copy of the teacher's notes
- modifying tests to reflect selected objectives
- providing study guides
- reducing or omitting lengthy outside reading assignments
- reducing the number of answer choices on a multiple choice test
- tutoring by peers
- using computer word processing spell check and grammar check features
- using true/false, matching, or fill in the blank tests in lieu of essay tests

## **At Risk**

---

-Reduce multiple choice options and build the options back into the lessons so students get a feel for true AP questions

-Provide a copy of the teacher's notes on the class website

-Screencast a lesson/discussion.

- allowing students to correct errors (looking for understanding)
- teaching key aspects of a topic. Eliminate nonessential information
- allowing products (projects, timelines, demonstrations, models, drawings, dioramas, poster boards, charts, graphs, slide shows, videos, etc.) to demonstrate student's learning
- allowing students to select from given choices
- allowing the use of note cards or open-book during testing
- collaborating (general education teacher and specialist) to modify vocabulary, omit or modify items to reflect objectives for the student, eliminate sections of the test, and determine how the grade will be determined prior to giving the test.
- decreasing the amount of work presented or required
- having peers take notes or providing a copy of the teacher's notes
- marking students' correct and acceptable work, not the mistakes
- modifying tests to reflect selected objectives
- providing study guides
- reducing or omitting lengthy outside reading assignments

- reducing the number of answer choices on a multiple choice test
- tutoring by peers
- using authentic assessments with real-life problem-solving
- using true/false, matching, or fill in the blank tests in lieu of essay tests
- using videos, illustrations, pictures, and drawings to explain or clarify

## **Talented and Gifted Learning (T&G)**

---

-Create two blogs about the unit (before and after)

-Allow students to work at a faster pace by having material assessable two weeks prior.

- Above grade level placement option for qualified students
- Advanced problem-solving
- Allow students to work at a faster pace
- Cluster grouping
- Complete activities aligned with above grade level text using Benchmark results
- Create a blog or social media page about their unit
- Create a plan to solve an issue presented in the class or in a text
- Debate issues with research to support arguments
- Flexible skill grouping within a class or across grade level for rigor
- Higher order, critical & creative thinking skills, and discovery
- Multi-disciplinary unit and/or project
- Teacher-selected instructional strategies that are focused to provide challenge, engagement, and growth opportunities
- Utilize exploratory connections to higher-grade concepts
- Utilize project-based learning for greater depth of knowledge

## **Sample Lesson**

---

Sample Lesson is located in Unit 1.