

# Unit 2: Love

Content Area: **ELA**  
Course(s): **ELA 4 AP Lit & Comp**  
Time Period: **OctNov**  
Length: **4-6 weeks Grade 12**  
Status: **Published**

## **Title Section**

---

## **Department of Curriculum and Instruction**



**Belleville Public Schools**

**Curriculum Guide**

# English 4 Advanced Placement - Literature and Composition: Grade 12

## Unit 2: Love

**Belleville Board of Education**

**102 Passaic Avenue**

**Belleville, NJ 07109**

**Prepared by:** Joette Nigro, Teacher of English

Dr. Richard Tomko, Ph.D., M.J., Superintendent of Schools

Ms. LucyAnn Demikoff, Director of Curriculum and Instruction K-12

Ms. Nicole Shanklin, Director of Elementary Education

Mr. George Droste, Director of Secondary Education

Board Approved: September 23, 2019

## **Unit Overview**

---

Students will explore the meaning and theme of love throughout various literary works.

## **Enduring Understanding**

---

- **Enduring Understanding:**
- Using contextual clues while rreading literature allows the reader to construct meaning about the theme of love being communicated by an author.
- Reflection, both mentally and in written form is important.
- Stories that present ideas and themes of this unit ,help the reader absorb the experience and the wisdom to come up with his/her own definition
- **Essential Questions:** Use questions to guide and construct meaning from the text.

## **Essential Questions**

---

What is love? Are there various identifiable categories of love?

What is the relationship between the lover and the object of his or her affection?

What does love require of us? / How do we express or demonstrate love?

Do we see love as a part of nature or as transcendent?

## **Exit Skills**

---

By the end of Grade 12, AP Literature and Composition Unit 2, the student should be able to:

- Read, comprehend, analyze and critique everyday texts
- Understand and apply written and oral conventions to everyday interactions
- Become active readers, good listeners and critical thinkers in everyday situations
- Using contextual clues while reading literature allows the reader to construct meaning about the theme of love being communicated by an author.

## **New Jersey Student Learning Standards (NJSL-S)**

---

LA.L.11-12.1.A	Apply the understanding that usage is a matter of convention, can change over time, and is sometimes contested.
LA.L.11-12.2.A	Observe hyphenation conventions.
LA.L.11-12.3	Apply knowledge of language to understand how language functions in different contexts, to make effective choices for meaning or style, and to comprehend more fully when reading or listening.
LA.L.11-12.3.A	Vary syntax for effect, apply an understanding of syntax to the study of complex texts.
LA.L.11-12.4.A	Use context (e.g., the overall meaning of a sentence, paragraph, or text; a word's position or function in a sentence) as a clue to the meaning of a word or phrase.

LA.L.11-12.4.C	Consult general and specialized reference materials (e.g., dictionaries, glossaries, thesauruses), both print and digital, to find the pronunciation of a word or determine or clarify its precise meaning, its part of speech, its etymology, or its standard usage.
LA.L.11-12.5.B	Analyze nuances in the meaning of words with similar denotations.
LA.W.11-12.1.A	Introduce precise, knowledgeable claim(s), establish the significance of the claim(s), distinguish the claim(s) from alternate or opposing claims, and create an organization that logically sequences claim(s), counterclaims, reasons, and evidence.
LA.W.11-12.1.C	Use transitions (e.g., words, phrases, clauses) to link the major sections of the text, create cohesion, and clarify the relationships between claim(s) and reasons, between reasons and evidence, and between claim(s) and counterclaims.
LA.W.11-12.1.E	Provide a concluding paragraph or section that supports the argument presented (e.g., articulating implications or the significance of the topic).
LA.W.11-12.2.B	Develop the topic thoroughly by selecting the most significant and relevant facts, extended definitions, concrete details, quotations, or other information and examples appropriate to the audience’s knowledge of the topic.
LA.W.11-12.2.D	Use precise language, domain-specific vocabulary, and techniques such as metaphor, simile, and analogy to manage the complexity of the topic.
LA.W.11-12.2.F	Provide a concluding paragraph or section that supports the argument presented (e.g., articulating implications or the significance of the topic).
LA.W.11-12.3.B	Use narrative techniques, such as dialogue, pacing, description, reflection, and multiple plot lines, to develop experiences, events, and/or characters.
LA.W.11-12.3.D	Use precise words and phrases, telling details, and sensory language to convey a vivid picture of the experiences, events, setting, and/or characters.
LA.W.11-12.5	Develop and strengthen writing as needed by planning, revising, editing, rewriting, trying a new approach, or consulting a style manual (such as MLA or APA Style), focusing on addressing what is most significant for a specific purpose and audience.
LA.W.11-12.8	Gather relevant information from multiple authoritative print and digital sources, using advanced searches effectively; assess the strengths and limitations of each source in terms of the task, purpose, and audience; integrate information into the text selectively to maintain the flow of ideas, avoiding plagiarism and overreliance on any one source and following a standard format for citation. (MLA or APA Style Manuals).
LA.W.11-12.9.A	Apply grades 11–12 Reading standards to literature (e.g., “Demonstrate knowledge of eighteenth-, nineteenth- and early-twentieth-century foundational works, including how two or more texts from the same period treat similar themes or topics”).
LA.W.11-12.10	Write routinely over extended time frames (time for research, reflection, and revision) and shorter time frames (a single sitting or a day or two) for a range of tasks, purposes.
LA.RI.11-12.2	Determine two or more central ideas of a text, and analyze their development and how they interact to provide a complex analysis; provide an objective summary of the text.
LA.RI.11-12.5	Analyze and evaluate the effectiveness of the structure an author uses in his or her exposition or argument, including whether the structure makes points clear, convincing, and engaging.
LA.RI.11-12.8	Describe and evaluate the reasoning in seminal U.S. and global texts, including the application of constitutional principles and use of legal reasoning (e.g., in U.S. Supreme Court majority opinions and dissents) and the premises, purposes, and arguments in works of public advocacy (e.g., The Federalist, presidential addresses).
LA.RI.11-12.10b	By the end of grade 12, read and comprehend literary nonfiction at grade level text-complexity or above.
LA.RL.11-12.2	Determine two or more themes or central ideas of a text and analyze their development over the course of the text, including how they interact and build on one another to

	produce a complex account; provide an objective summary of the text.
LA.RL.11-12.5	Analyze how an author’s choices concerning how to structure specific parts of a text (e.g., the choice of where to begin or end a story, the choice to provide a comedic or tragic resolution) contribute to its overall structure and meaning as well as its aesthetic impact.
LA.RL.11-12.8	(Not applicable to literature)
LA.RL.11-12.10b	By the end of grade 12, read and comprehend literature, including stories, dramas, and poems, at grade level or above.
LA.SL.11-12.1	Initiate and participate effectively in a range of collaborative discussions (one-on-one, in groups, and teacher-led) with peers on grades 11–12 topics, texts, and issues, building on others’ ideas and expressing their own clearly and persuasively.
LA.SL.11-12.1.B	Collaborate with peers to promote civil, democratic discussions and decision-making, set clear goals and assessments (e.g., student developed rubrics), and establish individual roles as needed.
LA.SL.11-12.1.D	Respond thoughtfully to diverse perspectives; synthesize comments, claims, and evidence made on all sides of an issue; resolve contradictions when possible; and determine what additional information or research is required to deepen the investigation or complete the task.
LA.SL.11-12.3	Evaluate a speaker’s point of view, reasoning, and use of evidence and rhetoric, assessing the stance, premises, links among ideas, word choice, points of emphasis, and tone used.
LA.SL.11-12.5	Make strategic use of digital media (e.g., textual, graphical, audio, visual, and interactive elements) in presentations to enhance understanding of findings, reasoning, and evidence and to add interest.

## **Interdisciplinary Connections**

---

SOC.9-12.1.1.1	Compare present and past events to evaluate the consequences of past decisions and to apply lessons learned.
SOC.9-12.1.1.2	Analyze how change occurs through time due to shifting values and beliefs as well as technological advancements and changes in the political and economic landscape.
SOC.9-12.1.3.1	Distinguish valid arguments from false arguments when interpreting current and historical events.
SOC.9-12.1.3.2	Evaluate sources for validity and credibility and to detect propaganda, censorship, and bias.

## **Learning Objectives**

---

### **Effective Learning Objectives Used in Lesson Planning:**

- Recognize ways that readers make meaning from a text
- Understand the use of context clues to determine a word's meaning
- Interpret literary elements in short stories with special emphasis on plot, climax, character, setting,

irony, point of view, and theme

- Apply a variety of reading strategies
- Respond to literature (class discussion, writing assignments, and journals)
- Learn and use new vocabulary
- Plan, draft, revise and edit written assignments
- Students will demonstrate the ability to define and interpret how themes reflect characterization throughout literature.

**Action Verbs:** Below are examples of action verbs associated with each level of the Revised Bloom's Taxonomy.

<b>Remember</b>	<b>Understand</b>	<b>Apply</b>	<b>Analyze</b>	<b>Evaluate</b>	<b>Create</b>
Choose	Classify	Choose	Categorize	Appraise	Combine
Describe	Defend	Dramatize	Classify	Judge	Compose
Define	Demonstrate	Explain	Compare	Criticize	Construct
Label	Distinguish	Generalize	Differentiate	Defend	Design
List	Explain	Judge	Distinguish	Compare	Develop
Locate	Express	Organize	Identify	Assess	Formulate
Match	Extend	Paint	Infer	Conclude	Hypothesize
Memorize	Give Examples	Prepare	Point out	Contrast	Invent
Name	Illustrate	Produce	Select	Critique	Make
Omit	Indicate	Select	Subdivide	Determine	Originate
Recite	Interrelate	Show	Survey	Grade	Organize
Select	Interpret	Sketch	Arrange	Justify	Plan
State	Infer	Solve	Breakdown	Measure	Produce
Count	Match	Use	Combine	Rank	Role Play
Draw	Paraphrase	Add	Detect	Rate	Drive
Outline	Represent	Calculate	Diagram	Support	Devise
Point	Restate	Change	Discriminate	Test	Generate
Quote	Rewrite	Classify	Illustrate		Integrate
Recall	Select	Complete	Outline		Prescribe
Recognize	Show	Compute	Point out		Propose
Repeat	Summarize	Discover	Separate		Reconstruct
Reproduce	Tell	Divide			Revise
	Translate	Examine			Rewrite
	Associate	Graph			Transform
	Compute	Interpolate			
	Convert	Manipulate			
	Discuss	Modify			
	Estimate	Operate			
	Extrapolate	Subtract			
	Generalize				
	Predict				



## Suggested Activities & Best Practices

Example: Assign a book talk project on Frankenstein and have students work in their student centered groups to create a rubric for the assignment

**Student Centered Learning:** Students should either have already selected groups or groups of their choosing and we ready to jigsaw or answer higher order thinking discussion questions related to the theme or topic of the piece of literature being discussed.

**Use of Rubrics:** After discussing an assignment, allow students to create what they believe to be a fair rubric for assessing the assignment. This allows the students to have a say in how they will be graded as well as accountability for the assignment.

**Starting classes with a "Do Now" activity:** Using a connection to life question that relates to the piece of literature will make the students be able to connect to the text and jump start to discussion.

**Allowing students to choose their own projects:** Having a variety of projects that the students can choose from helps address all learning types. This will allow the students to choose the project they feel they can be most successful in completing.

**Brainstorming:** This helps in the writing process because it will allow the student to know if they are grasping the topic.

### **Assessment Evidence - Checking for Understanding (CFU)**

---

Example: Assign 2-4 chapters of Frankenstein and hold reading check quizzes once a week. (formative assessment)

#### **Previous AP Literature and Composition Tests**

Use as Quizzes (summative assessment)

Use as Tests (summative assessment)

Various worksheets to go along with selections - formative assessment

#### **Department Made:**

Quarterly Assessments/Common Benchmarks (summative assessment)

Unit/Selection Review (formative assessment)



## **Teacher Made:**

Web-Based Assessments (alternative assessment)

Various Assignments/Projects/Essay Topics (alternative assessment)

Evaluation Rubrics (formative assessment)

Exit Tickets (formative assessment)

- Admit Tickets
- Anticipation Guide
- Common Benchmarks
- Compare & Contrast
- Create a Multimedia Poster
- DBQ's
- Define
- Describe
- Evaluate
- Evaluation rubrics
- Exit Tickets
- Explaining
- Illustration
- Journals
- KWL Chart
- Learning Center Activities
- Multimedia Reports
- Newspaper Headline
- Outline
- Question Stems
- Quickwrite
- Quizzes
- Red Light, Green Light
- Self- assessments
- Socratic Seminar
- Study Guide
- Surveys
- Teacher Observation Checklist
- Think, Write, Pair, Share
- Top 10 List
- Unit review/Test prep
- Unit tests

- Web-Based Assessments
- Written Reports

## **Primary Resources & Materials**

---

*Frankenstein* by Mary Shelly

Roberts, Edgar V. and Jacobs, Henry E. - *Literture: An Introduction to Reading and Writing, Seventh Edition, Pearson/Prentice Hall, Upper Saddle River, NJ 2004*

## **Ancillary Resources**

---

- Teacher made study packets for corresponding pieces of literature
- Supplimental materials availble through various test prep sources
- Internet
- Podcast
- Literary Criticism

## **Technology Infusion**

---

Chromebooks

SmartTV

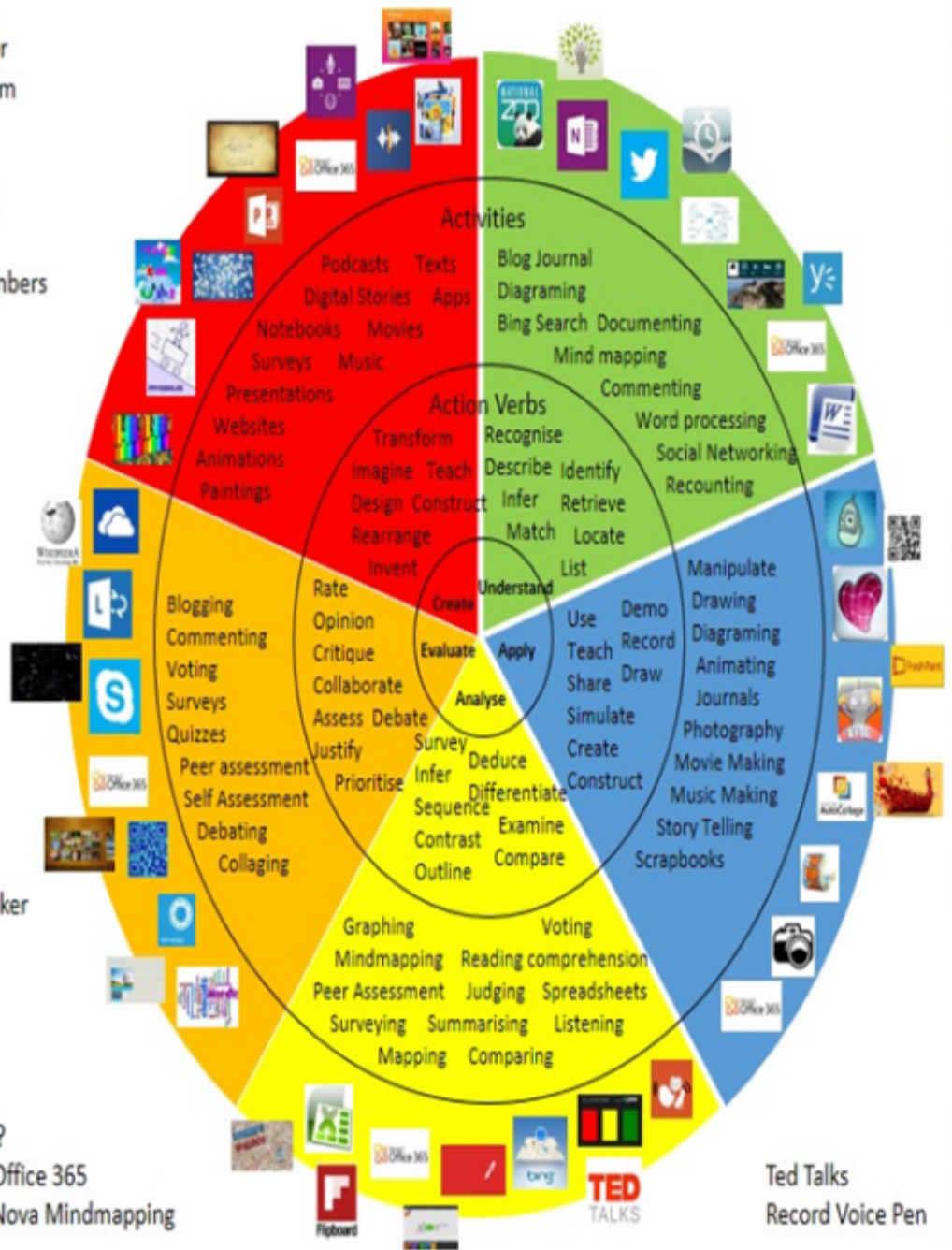
Google Classroom

# Win 8.1 Apps/Tools Pedagogy Wheel

Podcasts  
Photostory 3  
Kid Story Builder  
Music Maker Jam  
Paint A Story  
Office 365  
MS PowerPoint  
Stack 'Em Up  
NqSquared Numbers  
Physamajig  
Xylophone 8

Wikipedia  
Skydrive  
Lync  
SkyMap  
Skype  
Office 365  
Puzzle Touch  
Easy QR  
Memorylage  
Life Moments  
Word Cloud Maker

Where's Waldo?  
MS Excel  
Flipboard  
Office 365  
Nova Mindmapping



Originally taken from <http://www.coetail.com/zimmer/files/2013/02/IPadagogy-Wheel.001.jpg>  
And adapted for Windows 8.1 devices by Charlotte Beckhurst @CharBeckhurst

## Alignment to 21st Century Skills & Technology

---

Mastery and infusion of **21st Century Skills & Technology** and their Alignment to the core content areas is essential to student learning. The core content areas include:

- English Language Arts;
- Mathematics;
- Science and Scientific Inquiry (Next Generation);
- Social Studies, including American History, World History, Geography, Government and Civics, and Economics;
- World languages;
- Technology;
- Visual and Performing Arts.

CAEP.9.2.12.C.1	Review career goals and determine steps necessary for attainment.
CAEP.9.2.12.C.3	Identify transferable career skills and design alternate career plans.
CAEP.9.2.12.C.5	Research career opportunities in the United States and abroad that require knowledge of world languages and diverse cultures.
CAEP.9.2.12.C.7	Examine the professional, legal, and ethical responsibilities for both employers and employees in the global workplace.
TECH.8.1.12.A.1	Create a personal digital portfolio which reflects personal and academic interests, achievements, and career aspirations by using a variety of digital tools and resources.
TECH.8.1.12.A.2	Produce and edit a multi-page digital document for a commercial or professional audience and present it to peers and/or professionals in that related area for review.
TECH.8.1.12.A.CS1	Understand and use technology systems.
TECH.8.2.12.D.4	Assess the impacts of emerging technologies on developing countries.
TECH.8.2.12.D.6	Synthesize data, analyze trends and draw conclusions regarding the effect of a technology on the individual, society, or the environment and publish conclusions.
TECH.8.2.12.E.4	Use appropriate terms in conversation (e.g., troubleshooting, peripherals, diagnostic software, GUI, abstraction, variables, data types and conditional statements).

## 21st Century Skills/Interdisciplinary Themes

---

- Communication and Collaboration
- Creativity and Innovation
- Critical thinking and Problem Solving
- ICT (Information, Communications and Technology) Literacy
- Information Literacy

- Life and Career Skills

- Media Literacy

SOC.9-12.1	What are effective strategies for accessing various sources of information and historical evidence, determining their validity, and using them to solve a problem or find a solution to a public policy question?
SOC.9-12.1.1.1	Compare present and past events to evaluate the consequences of past decisions and to apply lessons learned.
SOC.9-12.1.2.1	Construct various forms of geographic representations to show the spatial patterns of physical and human phenomena.
SOC.9-12.1.3.1	Distinguish valid arguments from false arguments when interpreting current and historical events.
SOC.9-12.1.4.1	Take a position on a current public policy issue and support it with historical evidence, reasoning, and constitutional analysis in a written and/or oral format.

## 21st Century Skills

---

- Civic Literacy
- Environmental Literacy
- Financial, Economic, Business and Entrepreneurial Literacy
- Global Awareness
- Health Literacy

CAEP.9.2.12.C.2	Modify Personalized Student Learning Plans to support declared career goals.
CAEP.9.2.12.C.4	Analyze how economic conditions and societal changes influence employment trends and future education.
CAEP.9.2.12.C.6	Investigate entrepreneurship opportunities as options for career planning and identify the knowledge, skills, abilities, and resources required for owning and managing a business.
CAEP.9.2.12.C.8	Assess the impact of litigation and court decisions on employment laws and practices.

## Differentiation

---

Example: The teacher should create a study guide packet for Frankenstein with objective and higher order thinking questions.

### Differentiations:

- Small group instruction
- Small group assignments
- Extra time to complete assignments
- Pairing oral instruction with visuals
- Repeat directions
- Use manipulatives
- Center-based instruction
- Study guides

- Teacher reads assessments allowed
- Scheduled breaks
- Rephrase written directions
- Multisensory approaches
- Additional time
- Preview vocabulary
- Preview content & concepts
- Story guides
- Behavior management plan
- Highlight text
- Student(s) work with assigned partner
- Visual presentation
- Assistive technology
- Auditory presentations
- Small group setting

#### **Hi-Prep Differentiations:**

- Alternative formative and summative assessments
- Games and tournaments
- Group investigations
- Guided Reading
- Independent research and projects
- Interest groups
- Learning contracts
- Leveled rubrics
- Literature circles
- Multiple intelligence options
- Multiple texts
- Personal agendas
- Project-based learning
- Problem-based learning
- Stations/centers
- Tiered activities/assignments
- Tiered products
- Varying organizers for instructions

#### **Lo-Prep Differentiations**

- Choice of books or activities
- Exploration by interest
- Flexible grouping
- Goal setting with students
- Jigsaw
- Mini workshops to re-teach or extend skills
- Open-ended activities
- Reading buddies
- Varied journal prompts
- Varied supplemental materials

## **Special Education Learning (IEP's & 504's)**

---

Example: Teacher should create and provide guided reading questions for Frankenstein to help those who need a more structured reading assignment.

- printed copy of board work/notes provided
- additional time for skill mastery
- assistive technology
- behavior management plan
- Center-Based Instruction
- check work frequently for understanding
- computer or electronic device utilizes
- extended time on tests/ quizzes
- have student repeat directions to check for understanding
- highlighted text visual presentation
- modified assignment format
- modified test content
- modified test format
- modified test length
- multiple test sessions
- multi-sensory presentation
- preferential seating
- preview of content, concepts, and vocabulary
- Provide modifications as dictated in the student's IEP/504 plan
- reduced/shortened reading assignments
- Reduced/shortened written assignments
- secure attention before giving instruction/directions
- shortened assignments
- student working with an assigned partner
- teacher initiated weekly assignment sheet
- Use open book, study guides, test prototypes

## **English Language Learning (ELL)**

---

Example: The teacher should allow the ELL students to use the open book strategy when taking the assessment for Frankenstein.

- teaching key aspects of a topic. Eliminate nonessential information
- using videos, illustrations, pictures, and drawings to explain or clarify
- allowing products (projects, timelines, demonstrations, models, drawings, dioramas, poster boards, charts, graphs, slide shows, videos, etc.) to demonstrate student's learning;
- allowing students to correct errors (looking for understanding)
- allowing the use of note cards or open-book during testing
- decreasing the amount of work presented or required
- having peers take notes or providing a copy of the teacher's notes
- modifying tests to reflect selected objectives
- providing study guides
- reducing or omitting lengthy outside reading assignments
- reducing the number of answer choices on a multiple choice test
- tutoring by peers
- using computer word processing spell check and grammar check features
- using true/false, matching, or fill in the blank tests in lieu of essay tests

## **At Risk**

---

Example: The teacher should only provide 1-2 chapters of Frankenstein for at risk students with guided reading questions.

- allowing students to correct errors (looking for understanding)
- teaching key aspects of a topic. Eliminate nonessential information
- allowing products (projects, timelines, demonstrations, models, drawings, dioramas, poster boards, charts, graphs, slide shows, videos, etc.) to demonstrate student's learning
- allowing students to select from given choices
- allowing the use of note cards or open-book during testing
- collaborating (general education teacher and specialist) to modify vocabulary, omit or modify items to reflect objectives for the student, eliminate sections of the test, and determine how the grade will be determined prior to giving the test.
- decreasing the amount of work presented or required
- having peers take notes or providing a copy of the teacher's notes
- marking students' correct and acceptable work, not the mistakes
- modifying tests to reflect selected objectives
- providing study guides
- reducing or omitting lengthy outside reading assignments
- reducing the number of answer choices on a multiple choice test
- tutoring by peers



- using authentic assessments with real-life problem-solving
- using true/false, matching, or fill in the blank tests in lieu of essay tests
- using videos, illustrations, pictures, and drawings to explain or clarify

## **Talented and Gifted Learning (T&G)**

---

Example: Advanced students may be assigned 4-6 chapters to read of Frankenstein with a study guide packet.

- Above grade level placement option for qualified students
- Advanced problem-solving
- Allow students to work at a faster pace
- Cluster grouping
- Complete activities aligned with above grade level text using Benchmark results
- Create a blog or social media page about their unit
- Create a plan to solve an issue presented in the class or in a text
- Debate issues with research to support arguments
- Flexible skill grouping within a class or across grade level for rigor
- Higher order, critical & creative thinking skills, and discovery
- Multi-disciplinary unit and/or project
- Teacher-selected instructional strategies that are focused to provide challenge, engagement, and growth opportunities
- Utilize exploratory connections to higher-grade concepts
- Utilize project-based learning for greater depth of knowledge

## **Sample Lesson**

---

Unit Name: Love

NJSLS: See attached

Interdisciplinary Connection: World History

Statement of Objective: SWDAT interpret and understand how the theme of innocence as portrayed throughout the story

Anticipatory Set: Writing Journal: Students should think of a time when they when they felt judged. How did they handle it?

Learning Activity:

- Students determine group settings and conduct discussion on Anticipatory Set topic
- Whole group discussion on collective responses

Student Assessment/CFU's:

- Exit Ticket

Materials:

- You Tube video
- Notebooks

21st Century Themes and Skills:

- Global Perspectives
- Civic Literacy
- Creativity and Innovation
- Information Literacy
- Critical Thinking and Problem Solving

Differentiation/Modifications:

- Cooperative groupings

Integration of Technology:

- SmartTV
- GoogleClassroom
- You Tube

LA.RL.11-12.5

Analyze how an author's choices concerning how to structure specific parts of a text (e.g., the choice of where to begin or end a story, the choice to provide a comedic or tragic resolution) contribute to its overall structure and meaning as well as its aesthetic impact.

