

# **Unit 2 - The Settings for Health Care Delivery Copied from: Medical Academy Field Experience, Copied on: 02/21/22**

Content Area: **Science**  
Course(s): **Medical Academy Field Experience**  
Time Period: **SeptOct**  
Length: **3 weeks & Grade 12**  
Status: **Published**

## **Title Section**

---

## **Department of Curriculum and Instruction**



**Belleville Public Schools**

**Curriculum Guide**

**Medical Academy Field Experience, Grade 12**

**The Settings for Health Care Delivery**

**Belleville Board of Education**

**102 Passaic Avenue**

**Belleville, NJ 07109**

**Prepared by:** Teacher of Biological Science, Paul Aiello

Dr. Richard Tomko, Ph.D., M.J., Superintendent of Schools

Ms. LucyAnn Demikoff, Director of Curriculum and Instruction K-12

Ms. Nicole Shanklin, Director of Elementary Education

Mr. Joseph Lepo, Director of Secondary Education

Board Approved:

## **Unit Overview**

---

This chapter focuses on the settings in which health services are delivered by health professionals in dedicated facilities such as hospitals, long-term care facilities, physician offices, clinics, and other facilities, as defined by the Joint Commission.

## **Enduring Understanding**

---

**Enduring understandings:**

The U.S. health care system consists of an extensive array of settings for health care. These settings include community-based facilities for ambulatory care, hospitals for acute care, and postacute care facilities—

community based as well as institutional.

These settings offer long-term treatment, rehabilitation, assistance with daily life, and comfort. Most health care occurs in the ambulatory setting, and most ambulatory care is provided in physician offices, outpatient hospital clinics, and hospital EDs.

However, two shifts are occurring:

First, some ambulatory services that used to be performed only in physician offices and outpatient clinics are being provided in other settings. These include urgent care centers, retail pharmacies, and telehealth services offering primary and urgent care outside the traditional ambulatory settings.

Second, a substantial amount acute health care that was traditionally provided in hospitals is now available in ambulatory settings, including ASCs and diagnostic imaging and laboratory centers.

These shifts in health care delivery are resulting in increasing vertical integration in the U.S. health care system as hospitals and hospital systems purchase new ambulatory sites of care in order to maintain their preeminent role in health care delivery.

## **Essential Questions**

---

### **Essential Questions:**

1. What is self-care?
2. What is ambulatory care, and what ambulatory care settings serve the most patients?
3. What are the emerging ambulatory care settings?
4. What is the community hospital, and what is its importance in the hospital sector?
5. What kinds of health problems are treated in ambulatory settings, and how do they differ from those seen in acute care hospitals?

6. What are the five different sectors of long-term care, and what role does each sector play?

### **Exit Skills**

---

Upon completion of this section, please remove all remaining descriptions, notes, outlines, examples and/or illustrations that are not needed or used.

What are the **Exit Skills** that the students should have acquired by the end of this Unit?

#### **Examples:**

By the end of Grade 1, ELA Unit 1, the student should be able to:

- Print his/her full name
- Identify/print capital letters
- Identify/print lowercase letters

### **New Jersey Student Learning Standards (NJSL-S)**

---

Upon completion of this section, please remove all remaining descriptions, notes, outlines, examples and/or illustrations that are not needed or used.

Please list only the content-level and cross-curricular **New Jersey Student Learning Standards** applicable to the unit. **Do not list standards that are not used in the unit.**

## **Interdisciplinary Connections**

---

Upon completion of this section, please remove all remaining descriptions, notes, outlines, examples and/or illustrations that are not needed or used.

Please list all and any additional **Interdisciplinary Connections/Cross-Curricular** New Jersey Student Learning Standards that link to this unit, and which are not included in the NJSLs section above.

## **Learning Objectives**

---

Upon completion of this section, please remove all remaining descriptions, notes, outlines, examples and/or illustrations that are not needed or used.

### **Effective Learning Objectives Used in Lesson Planning:**

- Begin with an action verb from one or more of Bloom's Taxonomy categories listed below;
- Are measurable and/or observable, using action verbs, such as "differentiate," "classify," "justify;"
- Are not vague or passive verbs, such as "understand," "remember;"
- Increase the use of verbs from Bloom's Taxonomy's higher order thinking categories, including **Analyze** and **Evaluate**
- Construct authentic learning activities and assessments that are derived from the Bloom's Taxonomy category - **Create**
- Minimize the use of lower order thinking categories - Remember and Understand.

**Examples:**

- **Identify** nutrients found in common food sources using the product's nutrition label;
- Use computer dietary analysis to assess a 2-day dietary intake and **categorize** the results;
- **Research** nutrition-related information on the internet and **evaluate** the reliability of the information.

**Action Verbs:** Below are examples of action verbs associated with each level of the Revised Bloom's Taxonomy.

Remember	Understand	Apply	Analyze	Evaluate	Create
Choose	Classify	Choose	Categorize	Appraise	Combine
Describe	Defend	Dramatize	Classify	Judge	Compose
Define	Demonstrate	Explain	Compare	Criticize	Construct
Label	Distinguish	Generalize	Differentiate	Defend	Design
List	Explain	Judge	Distinguish	Compare	Develop
Locate	Express	Organize	Identify	Assess	Formulate
Match	Extend	Paint	Infer	Conclude	Hypothesize
Memorize	Give Examples	Prepare	Point out	Contrast	Invent
Name	Illustrate	Produce	Select	Critique	Make
Omit	Indicate	Select	Subdivide	Determine	Originate
Recite	Interrelate	Show	Survey	Grade	Organize
Select	Interpret	Sketch	Arrange	Justify	Plan
State	Infer	Solve	Breakdown	Measure	Produce
Count	Match	Use	Combine	Rank	Role Play
Draw	Paraphrase	Add	Detect	Rate	Drive
Outline	Represent	Calculate	Diagram	Support	Devise
Point	Restate	Change	Discriminate	Test	Generate
Quote	Rewrite	Classify	Illustrate		Integrate
Recall	Select	Complete	Outline		Prescribe
Recognize	Show	Compute	Point out		Propose
Repeat	Summarize	Discover	Separate		Reconstruct
Reproduce	Tell	Divide			Revise
	Translate	Examine			Rewrite
	Associate	Graph			Transform
	Compute	Interpolate			
	Convert	Manipulate			
	Discuss	Modify			
	Estimate	Operate			
	Extrapolate	Subtract			
	Generalize				
	Predict				



## Suggested Activities & Best Practices

Upon completion of this section, please remove all remaining descriptions, notes, outlines, examples and/or illustrations that are not needed or used.

### Guidelines for Suggested Activities:

- Includes activities **appropriate & specific** to the development of the Unit;
- Is comprised of the variety of learning activities that will be referenced in lesson plans, constructed/developed and instructionally delivered in the classroom;
- Are authentic;
- Recognizes the learning styles of the students;
- Integrates problem- or project-based learning.

## **Assessment Evidence - Checking for Understanding (CFU)**

---

Upon completion of this section, please remove all remaining descriptions, notes, outlines, examples and/or illustrations that are not needed or used.

By identifying the **Evidence of Student Learning with Checking for Understanding (CFU)** techniques used during the lesson and/or for Closure (Madeline Hunter), please list the variety of means used to assess students' learning (e.g. quizzes, tests, academic prompts, observations, homework, journals).

- Admit Tickets
- Anticipation Guide
- Common Benchmarks
- Compare & Contrast
- Create a Multimedia Poster
- DBQ's
- Define
- Describe
- Evaluate
- Evaluation rubrics
- Exit Tickets
- Explaining
- Fist- to-Five or Thumb-Ometer
- Illustration
- Journals
- KWL Chart
- Learning Center Activities
- Multimedia Reports
- Newspaper Headline



- Outline
- Question Stems
- Quickwrite
- Quizzes
- Red Light, Green Light
- Self- assessments
- Socratic Seminar
- Study Guide
- Surveys
- Teacher Observation Checklist
- Think, Pair, Share
- Think, Write, Pair, Share
- Top 10 List
- Unit review/Test prep
- Unit tests
- Web-Based Assessments
- Written Reports

## **Primary Resources & Materials**

---

Upon completion of this section, please remove all remaining descriptions, notes, outlines, examples and/or illustrations that are not needed or used.

Please list all district-provided Primary Resources & Materials and/or those outside that are accessed with district resources.

## **Ancillary Resources**

---

Upon completion of this section, please remove all remaining descriptions, notes, outlines, examples and/or illustrations that are not needed or used.

Please list all additional resources that will be used to strengthen this unit's lessons.

## **Technology Infusion**

---

Upon completion of this sections, please remove all remaining descriptions, notes, outlines, examples and/or illustrations that are not needed or used.

What **Technology Infusion** and/or strategies are integrated into this unit to enhance learning? Please list all hardware, software and strategies. Please find a technology pedagogy wheel for assistance while completing this section.

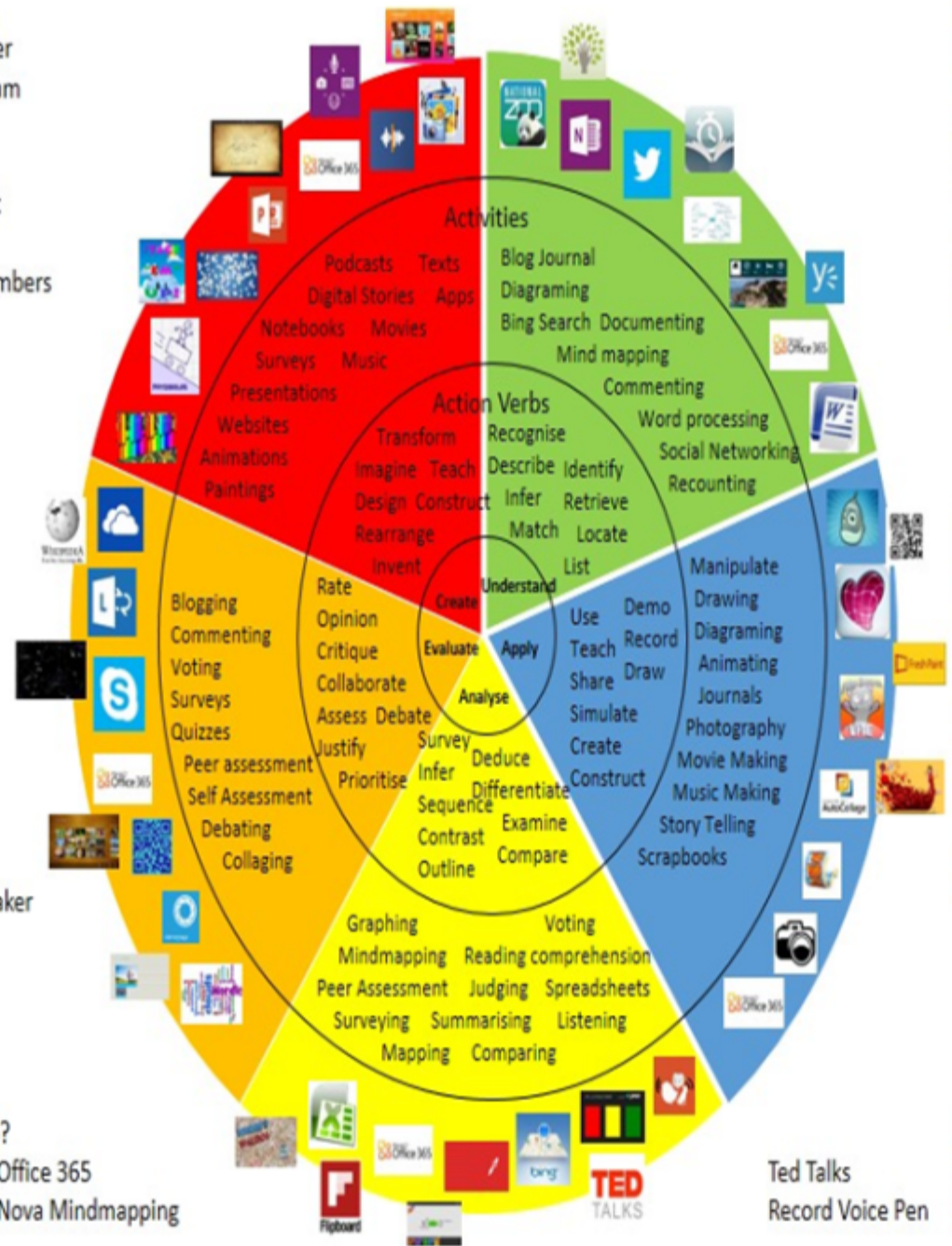
# Win 8.1 Apps/Tools Pedagogy Wheel

Originally taken from <http://www.coetail.com/vzimmer/files/2013/02/iPadagogy-Wheel.001.jpg>  
 And adapted for Windows 8.1 devices by Charlotte Beckhurst @CharBeckhurst

- Podcasts
- Photostory 3
- Kid Story Builder
- Music Maker Jam
- Paint A Story
- Office 365
- MS PowerPoint
- Stack 'Em Up
- NqSquared Numbers
- Physamajig
- Xylophone 8

- Wikipedia
- Skydrive
- Lync
- SkyMap
- Skype
- Office 365
- Puzzle Touch
- Easy QR
- Memorylage
- Life Moments
- Word Cloud Maker

- Where's Waldo?
- MS Excel
- Office 365
- Flipboard
- Nova Mindmapping



## **Alignment to 21st Century Skills & Technology**

---

Upon completion of this section, please remove all remaining descriptions, notes, outlines, examples and/or illustrations that are not needed or used.

Mastery and infusion of **21st Century Skills & Technology** and their Alignment to the core content areas is essential to student learning. The core content areas include:

- English Language Arts;
- Mathematics;
- Science and Scientific Inquiry (Next Generation);
- Social Studies, including American History, World History, Geography, Government and Civics, and Economics;
- World languages;
- Technology;
- Visual and Performing Arts.

## **21st Century Skills/Interdisciplinary Themes**

---

Upon completion of this section, please remove all remaining descriptions, notes, outlines, examples and/or illustrations that are not needed or used.

Please list only the **21st Century/Interdisciplinary Themes** that will be incorporated into this unit.

- Communication and Collaboration
- Creativity and Innovation
- Critical thinking and Problem Solving
- ICT (Information, Communications and Technology) Literacy
- Information Literacy
- Life and Career Skills
- Media Literacy

## **21st Century Skills**

---

Upon completion of this section, please remove all remaining descriptions, notes, outlines, examples and/or illustrations that are not needed or used.

Please list only the **21st Century Skills** that will be incorporated into this unit.

- Civic Literacy
- Environmental Literacy
- Financial, Economic, Business and Entrepreneurial Literacy
- Global Awareness
- Health Literacy

## **Differentiation**

---

Upon completion of this section, please remove all remaining descriptions, notes, outlines, examples and/or illustrations that are not needed or used.

Please remember: Effective educational **Differentiation** in a lesson lies within content, process, and/or product.

Please identify the ones that will be employed in this unit.

### **Differentiations:**

- Small group instruction
- Small group assignments
- Extra time to complete assignments
- Pairing oral instruction with visuals
- Repeat directions
- Use manipulatives
- Center-based instruction
- Token economy
- Study guides
- Teacher reads assessments allowed
- Scheduled breaks
- Rephrase written directions
- Multisensory approaches
- Additional time
- Preview vocabulary
- Preview content & concepts
- Story guides
- Behavior management plan
- Highlight text
- Student(s) work with assigned partner

- Visual presentation
- Assistive technology
- Auditory presentations
- Large print edition
- Dictation to scribe
- Small group setting

#### **Hi-Prep Differentiations:**

- Alternative formative and summative assessments
- Choice boards
- Games and tournaments
- Group investigations
- Guided Reading
- Independent research and projects
- Interest groups
- Learning contracts
- Leveled rubrics
- Literature circles
- Multiple intelligence options
- Multiple texts
- Personal agendas
- Project-based learning
- Problem-based learning
- Stations/centers
- Think-Tac-Toes
- Tiered activities/assignments
- Tiered products
- Varying organizers for instructions

#### **Lo-Prep Differentiations**

- Choice of books or activities
- Cubing activities
- Exploration by interest
- Flexible grouping
- Goal setting with students
- Jigsaw
- Mini workshops to re-teach or extend skills
- Open-ended activities
- Think-Pair-Share
- Reading buddies
- Varied journal prompts
- Varied supplemental materials

## **Special Education Learning (IEP's & 504's)**

---

Please identify the **Special Education Learning** adaptations that will be employed in the unit, using the ones identified below.

- printed copy of board work/notes provided
- additional time for skill mastery
- assistive technology
- behavior management plan
- Center-Based Instruction
- check work frequently for understanding
- computer or electronic device utilizes
- extended time on tests/ quizzes
- have student repeat directions to check for understanding
- highlighted text visual presentation
- modified assignment format
- modified test content
- modified test format
- modified test length
- multiple test sessions
- multi-sensory presentation
- preferential seating
- preview of content, concepts, and vocabulary
- Provide modifications as dictated in the student's IEP/504 plan
- reduced/shortened reading assignments
- Reduced/shortened written assignments
- secure attention before giving instruction/directions
- shortened assignments
- student working with an assigned partner
- teacher initiated weekly assignment sheet
- Use open book, study guides, test prototypes

## **English Language Learning (ELL)**

---

Please identify the **English Language Learning** adaptations that will be employed in the unit, using the ones identified below.

- teaching key aspects of a topic. Eliminate nonessential information

- using videos, illustrations, pictures, and drawings to explain or clarify
- allowing products (projects, timelines, demonstrations, models, drawings, dioramas, poster boards, charts, graphs, slide shows, videos, etc.) to demonstrate student's learning;
- allowing students to correct errors (looking for understanding)
- allowing the use of note cards or open-book during testing
- decreasing the amount of work presented or required
- having peers take notes or providing a copy of the teacher's notes
- modifying tests to reflect selected objectives
- providing study guides
- reducing or omitting lengthy outside reading assignments
- reducing the number of answer choices on a multiple choice test
- tutoring by peers
- using computer word processing spell check and grammar check features
- using true/false, matching, or fill in the blank tests in lieu of essay tests

## **At Risk**

---

Please identify Intervention Strategies that will be employed in the unit, using the ones identified below.

- allowing students to correct errors (looking for understanding)
- teaching key aspects of a topic. Eliminate nonessential information
- allowing products (projects, timelines, demonstrations, models, drawings, dioramas, poster boards, charts, graphs, slide shows, videos, etc.) to demonstrate student's learning
- allowing students to select from given choices
- allowing the use of note cards or open-book during testing
- collaborating (general education teacher and specialist) to modify vocabulary, omit or modify items to reflect objectives for the student, eliminate sections of the test, and determine how the grade will be determined prior to giving the test.
- decreasing the amount of work presented or required
- having peers take notes or providing a copy of the teacher's notes
- marking students' correct and acceptable work, not the mistakes
- modifying tests to reflect selected objectives
- providing study guides
- reducing or omitting lengthy outside reading assignments
- reducing the number of answer choices on a multiple choice test
- tutoring by peers
- using authentic assessments with real-life problem-solving
- using true/false, matching, or fill in the blank tests in lieu of essay tests
- using videos, illustrations, pictures, and drawings to explain or clarify

## **Talented and Gifted Learning (T&G)**

---



Please identify the **Talented and Gifted** adaptations that will be employed in the unit, using the ones identified below.

- Above grade level placement option for qualified students
- Advanced problem-solving
- Allow students to work at a faster pace
- Cluster grouping
- Complete activities aligned with above grade level text using Benchmark results
- Create a blog or social media page about their unit
- Create a plan to solve an issue presented in the class or in a text
- Debate issues with research to support arguments
- Flexible skill grouping within a class or across grade level for rigor
- Higher order, critical & creative thinking skills, and discovery
- Multi-disciplinary unit and/or project
- Teacher-selected instructional strategies that are focused to provide challenge, engagement, and growth opportunities
- Utilize exploratory connections to higher-grade concepts
- Utilize project-based learning for greater depth of knowledge

## **Sample Lesson**

---

Using the template below, please develop a **Sample Lesson** for the first unit only.

Unit Name:

NJSLS:

Interdisciplinary Connection:

Statement of Objective:

Anticipatory Set/Do Now:

Learning Activity:

Student Assessment/CFU's:

Materials:

21st Century Themes and Skills:

Differentiation/Modifications:

Integration of Technology: