

Unit 4: Language Copied from: ELA 3 AP LA&C, Copied on: 02/21/22

Content Area: **ELA**
Course(s): **ELA AP LA&C**
Time Period: **December**
Length: **15 Days, Grade 11**
Status: **Published**

Title Section

Department of Curriculum and Instruction



Belleville Public Schools

Curriculum Guide

AP Language and Composition, Grade 11

Unit 4: Language

Belleville Board of Education

102 Passaic Avenue

Belleville, NJ 07109

Prepared by: Mrs. Danielle Santosusso

Dr. Richard Tomko, Ph.D., M.J., Superintendent of Schools

Ms. LucyAnn Demikoff, Director of Curriculum and Instruction K-12

Ms. Nicole Shanklin, Director of Elementary Education

Mr. George Droste, Director of Secondary Education

Board Approved: September 23, 2019

Unit Overview

Society judges us by how well we can read, write, listen, and speak. In Unit 4, students will read a variety of texts and evaluate the knowledge of language and the impressions the lack of a common language can have. Students will also write expository essays and analyze the effect of humor on arguments.

Enduring Understanding

Language is much more than just a form of communication between individuals; it is used as criteria to how "literate/intelligent" an individual is.

Essential Questions

How does the language we use reveal who we are?

Exit Skills

- Continue expanding academic vocabulary.
- Write a response to an expository prompt.
- Learn how to use satire/humor correctly while proving an argument.
- Infer the usage of word choice for a specific purpose.

New Jersey Student Learning Standards (NJSLS-S)

LA.RL.11-12.1	Cite strong and thorough textual evidence and make relevant connections to support analysis of what the text says explicitly as well as inferences drawn from the text, including determining where the text leaves matters uncertain.
LA.RL.11-12.2	Determine two or more themes or central ideas of a text and analyze their development over the course of the text, including how they interact and build on one another to produce a complex account; provide an objective summary of the text.
LA.RL.11-12.3	Analyze the impact of the author's choices regarding how to develop and relate elements of a story or drama (e.g., where a story is set, how the action is ordered, how the characters are introduced and developed).
LA.RL.11-12.4	Determine the meaning of words and phrases as they are used in the text, including figurative and connotative meanings; analyze the impact of specific word choices on meaning and tone, including words with multiple meanings or language that is particularly fresh, engaging, or beautiful. (e.g., Shakespeare as well as other authors.)
LA.RL.11-12.5	Analyze how an author's choices concerning how to structure specific parts of a text (e.g., the choice of where to begin or end a story, the choice to provide a comedic or tragic resolution) contribute to its overall structure and meaning as well as its aesthetic impact.
LA.RL.11-12.6	Analyze a case in which grasping a point of view requires distinguishing what is directly

	stated in a text from what is really meant (e.g., satire, sarcasm, irony, or understatement).
LA.RL.11-12.7	Analyze multiple interpretations of a story, drama, or poem (e.g., recorded or live production of a play or recorded novel or poetry), evaluating how each version interprets the source text. (e.g., Shakespeare and other authors.)
LA.RL.11-12.9	Demonstrate knowledge of and reflect on (e.g., practical knowledge, historical/cultural context, and background knowledge) eighteenth-, nineteenth- and early twentieth-century foundational works of literature, including how two or more texts from the same period treat similar themes or topics.
LA.RI.11-12.1	Accurately cite strong and thorough textual evidence, (e.g., via discussion, written response, etc.), to support analysis of what the text says explicitly as well as inferentially, including determining where the text leaves matters uncertain.
LA.RI.11-12.2	Determine two or more central ideas of a text, and analyze their development and how they interact to provide a complex analysis; provide an objective summary of the text.
LA.RI.11-12.3	Analyze a complex set of ideas or sequence of events and explain how specific individuals, ideas, or events interact and develop over the course of the text.
LA.RI.11-12.4	Determine the meaning of words and phrases as they are used in a text, including figurative, connotative, and technical meanings; analyze how an author uses and refines the meaning of a key term or terms over the course of a text (e.g., how Madison defines faction in Federalist No. 10).
LA.RI.11-12.5	Analyze and evaluate the effectiveness of the structure an author uses in his or her exposition or argument, including whether the structure makes points clear, convincing, and engaging.
LA.RI.11-12.6	Determine an author's point of view or purpose in a text in which the rhetoric is particularly effective, analyzing how style and content contribute to the power, persuasiveness or beauty of the text.
LA.RI.11-12.7	Integrate and evaluate multiple sources of information presented in different media or formats (e.g., visually, quantitatively) as well as in words in order to address a question or solve a problem.
LA.RI.11-12.9	Analyze and reflect on (e.g., practical knowledge, historical/cultural context, and background knowledge) documents of historical and literary significance for their themes, purposes and rhetorical features, including primary source documents relevant to U.S. and/or global history.
LA.W.11-12.1	Write arguments to support claims in an analysis of substantive topics or texts, using valid reasoning and relevant and sufficient evidence.
LA.W.11-12.2	Write informative/explanatory texts to examine and convey complex ideas, concepts, and information clearly and accurately through the effective selection, organization, and analysis of content.
LA.W.11-12.3	Write narratives to develop real or imagined experiences or events using effective technique, well-chosen details, and well-structured event sequences.
LA.W.11-12.5	Develop and strengthen writing as needed by planning, revising, editing, rewriting, trying a new approach, or consulting a style manual (such as MLA or APA Style), focusing on addressing what is most significant for a specific purpose and audience.
LA.W.11-12.9	Draw evidence from literary or informational texts to support analysis, reflection, and research.
LA.SL.11-12.1	Initiate and participate effectively in a range of collaborative discussions (one-on-one, in groups, and teacher-led) with peers on grades 11–12 topics, texts, and issues, building on others' ideas and expressing their own clearly and persuasively.
LA.L.11-12.4.A	Use context (e.g., the overall meaning of a sentence, paragraph, or text; a word's position or function in a sentence) as a clue to the meaning of a word or phrase.

LA.L.11-12.4.B	Identify and correctly use patterns of word changes that indicate different meanings or parts of speech (e.g., conceive, conception, conceivable).
LA.L.11-12.4.C	Consult general and specialized reference materials (e.g., dictionaries, glossaries, thesauruses), both print and digital, to find the pronunciation of a word or determine or clarify its precise meaning, its part of speech, its etymology, or its standard usage.
LA.L.11-12.4.D	Verify the preliminary determination of the meaning of a word or phrase (e.g., by checking the inferred meaning in context or in a dictionary).
LA.L.11-12.5	Demonstrate understanding of figurative language, word relationships, and nuances in word meanings.
LA.L.11-12.5.A	Interpret figures of speech (e.g., hyperbole, paradox) in context and analyze their role in the text.
LA.L.11-12.5.B	Analyze nuances in the meaning of words with similar denotations.
LA.11-12.SL.11-12.2	Integrate multiple sources of information presented in diverse formats and media (e.g., visually, quantitatively, orally) in order to make informed decisions and solve problems, evaluating the credibility and accuracy of each source and noting any discrepancies among the data.

Interdisciplinary Connections

CRP.K-12.CRP1.1	Career-ready individuals understand the obligations and responsibilities of being a member of a community, and they demonstrate this understanding every day through their interactions with others. They are conscientious of the impacts of their decisions on others and the environment around them. They think about the near-term and long-term consequences of their actions and seek to act in ways that contribute to the betterment of their teams, families, community and workplace. They are reliable and consistent in going beyond the minimum expectation and in participating in activities that serve the greater good.
CRP.K-12.CRP4.1	Career-ready individuals communicate thoughts, ideas, and action plans with clarity, whether using written, verbal, and/or visual methods. They communicate in the workplace with clarity and purpose to make maximum use of their own and others' time. They are excellent writers; they master conventions, word choice, and organization, and use effective tone and presentation skills to articulate ideas. They are skilled at interacting with others; they are active listeners and speak clearly and with purpose. Career-ready individuals think about the audience for their communication and prepare accordingly to ensure the desired outcome.
CRP.K-12.CRP5.1	Career-ready individuals understand the interrelated nature of their actions and regularly make decisions that positively impact and/or mitigate negative impact on other people, organization, and the environment. They are aware of and utilize new technologies, understandings, procedures, materials, and regulations affecting the nature of their work as it relates to the impact on the social condition, the environment and the profitability of the organization.
CRP.K-12.CRP11.1	Career-ready individuals find and maximize the productive value of existing and new technology to accomplish workplace tasks and solve workplace problems. They are flexible and adaptive in acquiring new technology. They are proficient with ubiquitous technology applications. They understand the inherent risks-personal and organizational-of technology applications, and they take actions to prevent or mitigate these risks.
TECH.8.1.12.A	Technology Operations and Concepts: Students demonstrate a sound understanding of

technology concepts, systems and operations.

TECH.8.1.12.C

Communication and Collaboration: Students use digital media and environments to communicate and work collaboratively, including at a distance, to support individual learning and contribute to the learning of others.

TECH.8.1.12.D

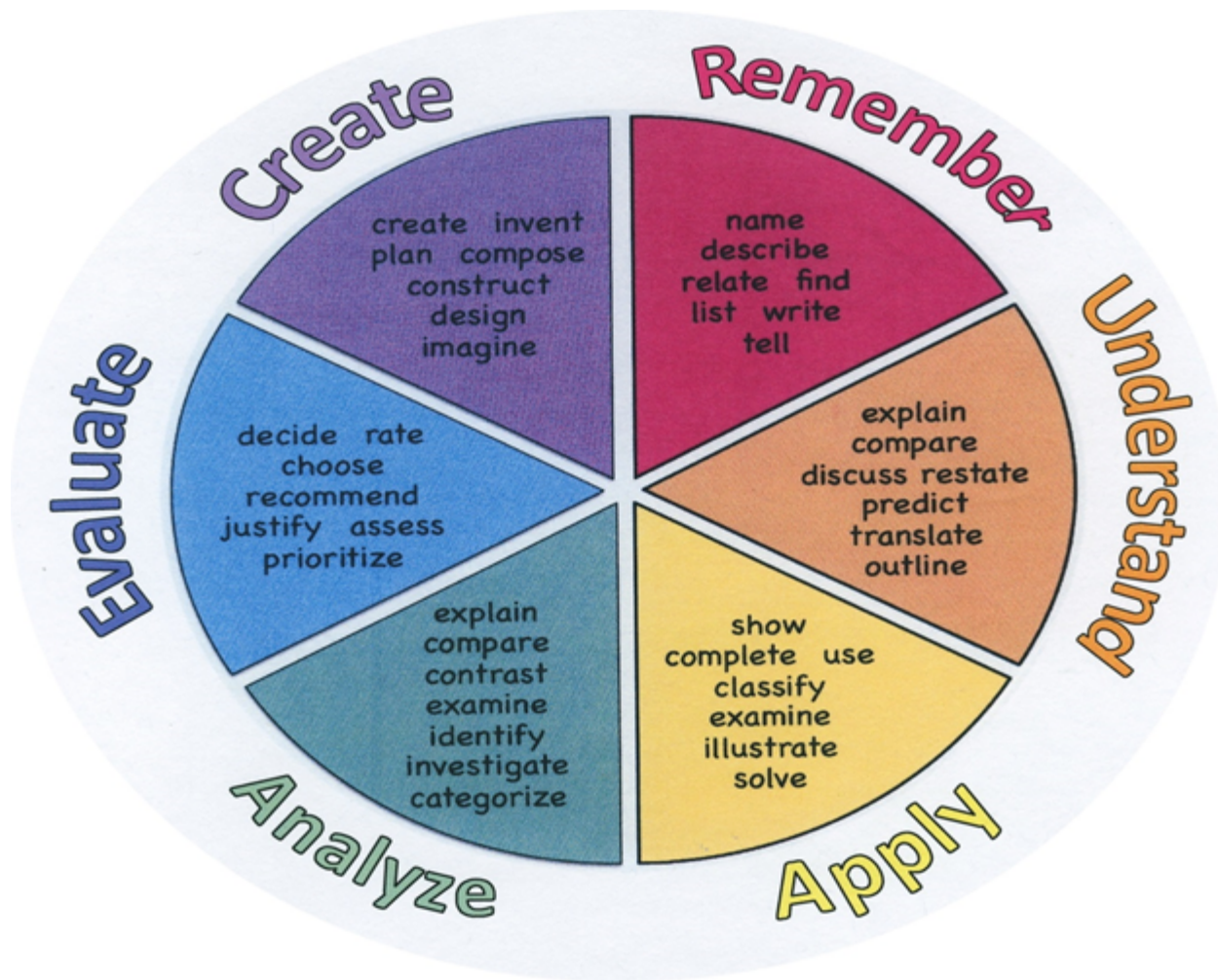
Digital Citizenship: Students understand human, cultural, and societal issues related to technology and practice legal and ethical behavior.

Learning Objectives

- Identify and analyze more new academic vocabulary.
- Review the conventions of literary analysis and the expository mode
- Learn the conventions of satire as a rhetorical strategy
- Learn how to use and analyze the effect of humor on argument.
- Analyze word choice in terms of audience and purpose.

Action Verbs: Below are examples of action verbs associated with each level of the Revised Bloom's Taxonomy.

Remember	Understand	Apply	Analyze	Evaluate	Create
Choose Describe Define Label List Locate Match Memorize Name Omit Recite Select State Count Draw Outline Point Quote Recall Recognize Repeat Reproduce	Classify Defend Demonstrate Distinguish Explain Express Extend Give Examples Illustrate Indicate Interrelate Interpret Infer Match Paraphrase Represent Restate Rewrite Select Show Summarize Tell Translate Associate Compute Convert Discuss Estimate Extrapolate Generalize Predict	Choose Dramatize Explain Generalize Judge Organize Paint Prepare Produce Select Show Sketch Solve Use Add Calculate Change Classify Complete Compute Discover Divide Examine Graph Interpolate Manipulate Modify Operate Subtract	Categorize Classify Compare Differentiate Distinguish Identify Infer Point out Select Subdivide Survey Arrange Breakdown Combine Detect Diagram Discriminate Illustrate Outline Point out Separate	Appraise Judge Criticize Defend Compare Assess Conclude Contrast Critique Determine Grade Justify Measure Rank Rate Support Test	Combine Compose Construct Design Develop Formulate Hypothesize Invent Make Originate Organize Plan Produce Role Play Drive Devise Generate Integrate Prescribe Propose Reconstruct Revise Rewrite Transform



Suggested Activities & Best Practices

-
- Each student will answer the unit's essential question(s) via Blogger on the class website before the unit begins. After the unit is completed, students will comment on their peer's post referencing material discussed during the unit. This will promote student interaction outside of the classroom as well as assist student's participation skills in the 21st century.
- Students will read critical articles of *Huckleberry Finn* and assume the role of their local school board, reviewing the novel for possible censorship. Each member of the class should write a short paragraph defining racism and censorship and share it in small groups. Students may choose to restrict the novel's use to certain age groups, to library and individual use only, or to eliminate it from the school's classrooms and libraries. Groups may also decide whether they believe the book, the writer, or the characters are racist and Twain's intention of creating such characters. They should provide examples from the text to support their arguments.

Assessment Evidence - Checking for Understanding (CFU)

Blog responses to Essential Question: How does the language we use reveal who we are? - formative assessment

Peer comments after the unit on Essential Questions Blogs. - formative assessment

AP Style Multiple Choice Practice Questions from Albert.io - summative assessment

Socratic Seminars - formative assessment

Huckleberry Finn Language Mini Project - alternative assessment

- Admit Tickets
- Anticipation Guide
- Common Benchmarks
- Compare & Contrast
- Create a Multimedia Poster
- DBQ's
- Define
- Describe
- Evaluate
- Evaluation rubrics
- Exit Tickets
- Explaining
- Fist- to-Five or Thumb-Ometer
- Illustration
- Journals
- KWL Chart
- Learning Center Activities
- Multimedia Reports
- Newspaper Headline
- Outline
- Question Stems
- Quickwrite
- Quizzes
- Red Light, Green Light
- Self- assessments

- Socratic Seminar
- Study Guide
- Surveys
- Teacher Observation Checklist
- Think, Pair, Share
- Think, Write, Pair, Share
- Top 10 List
- Unit review/Test prep
- Unit tests
- Web-Based Assessments
- Written Reports

Primary Resources & Materials

The Adventures of Huckleberry Finn, Mark Twain; (novel)

From *The Language of Composition*, 3rd ed., Shea, *et al* —

- “Aria: Memoir of a Bilingual Childhood,” Richard Rodriguez;
- “Politics and the English Language,” George Orwell;
- “Mother Tongue,” Amy Tan;
- “Always Living in Spanish,” Marjorie Agosin;
- “Bilingualism in America: English Should be the Official Language,” S.I. Hayakawa

Sadlier-Oxford Vocabulary Level H Units 7 and 8

Ancillary Resources

- “For Mohammed Zeid of Gaza, Age 15” and “Why I Could Not Accept Your Invitation,” Naomi Shihab Nye (poetry).

Technology Infusion

Google Classroom

Google Website

Blogger

Google Docs

Google Slides

Screencastify

Other technology infusions are used at the teacher's discretion

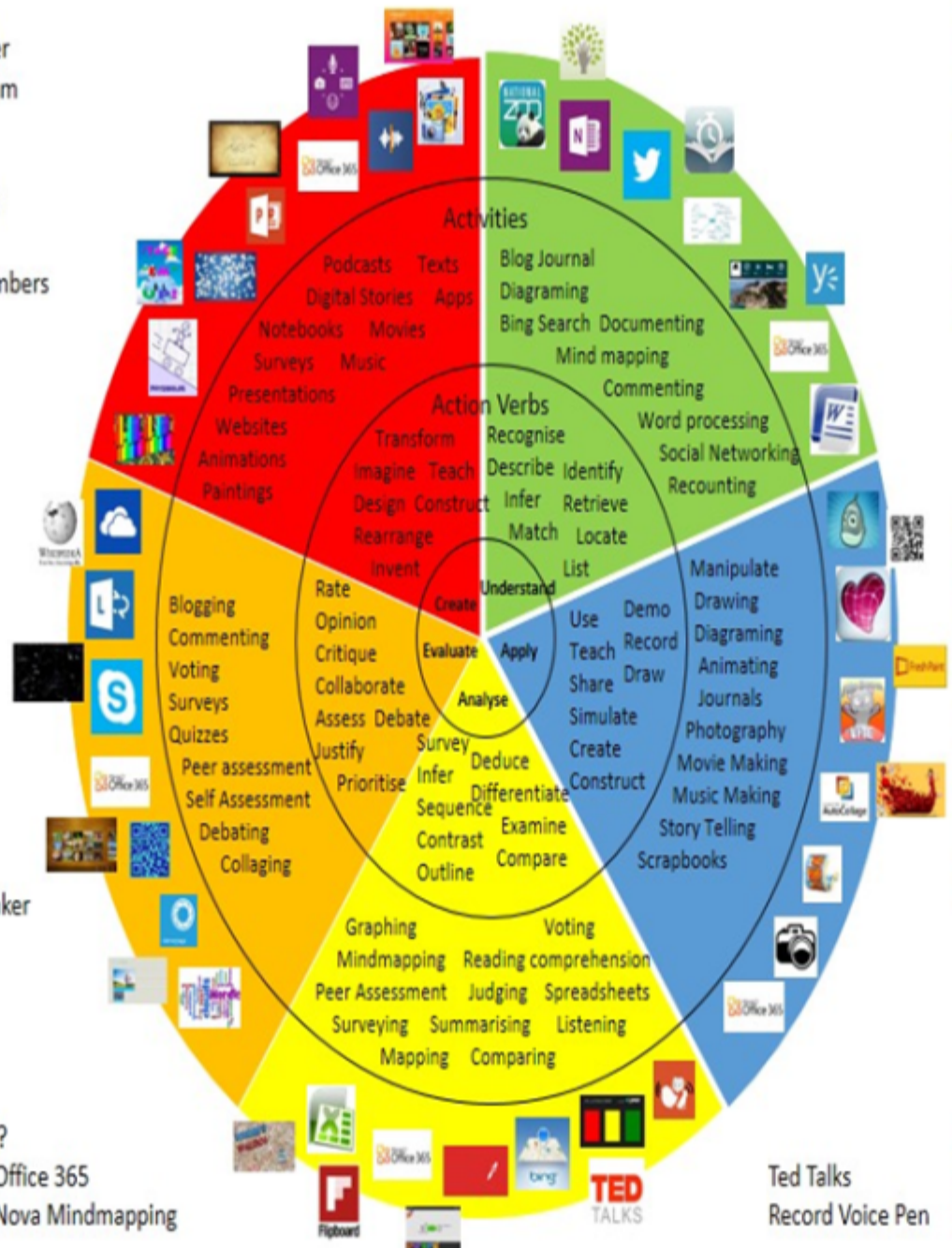
Win 8.1 Apps/Tools Pedagogy Wheel

Podcasts
Photostory 3
Kid Story Builder
Music Maker Jam
Paint A Story
Office 365
MS PowerPoint
Stack 'Em Up
NqSquared Numbers
Physamajig
Xylophone 8

Wikipedia
Skydrive
Lync
SkyMap
Skype
Office 365
Puzzle Touch
Easy QR
Memorylage
Life Moments
Word Cloud Maker

Where's Waldo?
MS Excel
Flipboard
Office 365
Nova Mindmapping

Ted Talks
Record Voice Pen



Alignment to 21st Century Skills & Technology

21st Century Skills & Technology:

- English Language Arts;
- Social Studies, including American History, World History, Geography, Government and Civics, and Economics;
- World languages;
- Technology

CRP.K-12.CRP1	Act as a responsible and contributing citizen and employee.
CRP.K-12.CRP2	Apply appropriate academic and technical skills.
CRP.K-12.CRP4	Communicate clearly and effectively and with reason.
CRP.K-12.CRP6	Demonstrate creativity and innovation.
CRP.K-12.CRP7	Employ valid and reliable research strategies.
CRP.K-12.CRP8	Utilize critical thinking to make sense of problems and persevere in solving them.
CRP.K-12.CRP9	Model integrity, ethical leadership and effective management.
CRP.K-12.CRP11	Use technology to enhance productivity.
TECH.8.1.12	Educational Technology: All students will use digital tools to access, manage, evaluate, and synthesize information in order to solve problems individually and collaborate and to create and communicate knowledge.
TECH.8.1.12.B	Creativity and Innovation: Students demonstrate creative thinking, construct knowledge and develop innovative products and process using technology.

21st Century Skills/Interdisciplinary Themes

- Communication and Collaboration
- Creativity and Innovation
- Critical thinking and Problem Solving
- ICT (Information, Communications and Technology) Literacy
- Information Literacy
- Life and Career Skills
- Media Literacy

21st Century Skills

21st Century/Interdisciplinary Themes that will be incorporated into this unit:

- Communication and Collaboration
- Information literacy

- Media Literacy
- Life and Career Skills
- Creativity and Innovation in Huck Finn Mini Project
- Critical thinking and Problem Solving used in Huck Finn Mini Project

- Civic Literacy
- Environmental Literacy
- Financial, Economic, Business and Entrepreneurial Literacy
- Global Awareness
- Health Literacy

Differentiation

Differentiations:

- Extra time to complete assignments
- Repeat directions in class and on teacher website
- Preview Vocabulary on teacher website

Hi-Prep Differentiations:

- Leveled rubric (student made)
- Literature Circles/Socratic Seminar

Lo-Prep Differentiations

- Flexible grouping/seating among classmates
- Think-Pair-Share Online Blog entries

Special Education Learning (IEP's & 504's)

- Provide modifications in workload and extended time as specified in the student's IEP/504 plan
 - Allow extra time for online blog submissions
 - Allow student to preview the material via teacher website
- Use of computer or electronic device during class to follow lesson, take notes, refer to HW for discussion
- Modeled AP essays and multiple choice questions with discussions for student retention.

- printed copy of board work/notes provided
- additional time for skill mastery
- assistive technology
- behavior management plan
- Center-Based Instruction
- check work frequently for understanding
- computer or electronic device utilizes
- extended time on tests/ quizzes
- have student repeat directions to check for understanding
- highlighted text visual presentation
- modified assignment format
- modified test content
- modified test format
- modified test length
- multi-sensory presentation
- multiple test sessions
- preferential seating
- preview of content, concepts, and vocabulary
- Provide modifications as dictated in the student's IEP/504 plan
- reduced/shortened reading assignments
- Reduced/shortened written assignments
- secure attention before giving instruction/directions
- shortened assignments
- student working with an assigned partner
- teacher initiated weekly assignment sheet
- Use open book, study guides, test prototypes

English Language Learning (ELL)

-Allow for shorter blog and homework responses

-Use of Youtube videos and Screencasts of lessons for student retention and clarification of material located on teacher's website.

- teaching key aspects of a topic. Eliminate nonessential information

- using videos, illustrations, pictures, and drawings to explain or clarify
- allowing products (projects, timelines, demonstrations, models, drawings, dioramas, poster boards, charts, graphs, slide shows, videos, etc.) to demonstrate student's learning;
- allowing students to correct errors (looking for understanding)
- allowing the use of note cards or open-book during testing
- decreasing the amount of work presented or required
- having peers take notes or providing a copy of the teacher's notes
- modifying tests to reflect selected objectives
- providing study guides
- reducing or omitting lengthy outside reading assignments
- reducing the number of answer choices on a multiple choice test
- tutoring by peers
- using computer word processing spell check and grammar check features
- using true/false, matching, or fill in the blank tests in lieu of essay tests

At Risk

-Reduce multiple choice options and build the options back into the lessons so students get a feel for true AP questions

-Provide a copy of the teacher's notes on the class website

-Screencast a lesson/discussion

- allowing students to correct errors (looking for understanding)
- teaching key aspects of a topic. Eliminate nonessential information
- allowing products (projects, timelines, demonstrations, models, drawings, dioramas, poster boards, charts, graphs, slide shows, videos, etc.) to demonstrate student's learning
- allowing students to select from given choices
- allowing the use of note cards or open-book during testing
- collaborating (general education teacher and specialist) to modify vocabulary, omit or modify items to reflect objectives for the student, eliminate sections of the test, and determine how the grade will be determined prior to giving the test.
- decreasing the amount of work presented or required
- having peers take notes or providing a copy of the teacher's notes
- marking students' correct and acceptable work, not the mistakes
- modifying tests to reflect selected objectives
- providing study guides
- reducing or omitting lengthy outside reading assignments
- reducing the number of answer choices on a multiple choice test
- tutoring by peers
- using authentic assessments with real-life problem-solving
- using true/false, matching, or fill in the blank tests in lieu of essay tests

- using videos, illustrations, pictures, and drawings to explain or clarify

Talented and Gifted Learning (T&G)

-Create two blogs about the unit (before and after)

-Allow students to work at a faster pace by having material assessable two weeks prior.

- Above grade level placement option for qualified students
- Advanced problem-solving
- Allow students to work at a faster pace
- Cluster grouping
- Complete activities aligned with above grade level text using Benchmark results
- Create a blog or social media page about their unit
- Create a plan to solve an issue presented in the class or in a text
- Debate issues with research to support arguments
- Flexible skill grouping within a class or across grade level for rigor
- Higher order, critical & creative thinking skills, and discovery
- Multi-disciplinary unit and/or project
- Teacher-selected instructional strategies that are focused to provide challenge, engagement, and growth opportunities
- Utilize exploratory connections to higher-grade concepts
- Utilize project-based learning for greater depth of knowledge

Sample Lesson

Sample Lesson located in Unit 1