

# **Unit 1-Machine Woodworking -Safety and Fundamentals Copied from: Machine Woodworking, Copied on: 02/21/22**

Content Area: **CTE**  
Course(s): **Machine Woodworking**  
Time Period: **SeptOct**  
Length: **34 Days**  
Status: **Published**

## **Title Section**

---

## **Department of Curriculum and Instruction**



**Belleville Public Schools**

**Curriculum Guide**

# **Unit 1-Machine Woodworking-Safety Fundamentals**

**Belleville Board of Education**

**102 Passaic Avenue**

**Belleville, NJ 07109**

Prepared by: Frank Longo

Dr. Richard Tomko, Ph.D., M.J., Superintendent of Schools

Ms. LucyAnn Demikoff, Director of Curriculum and Instruction K-12

Ms. Nicole Shanklin, Director of Elementary Education K-8, ESL Coordinator K-12

Mr. George Droste, Director of Secondary Education

Board Approved: September 23, 2019

## **Unit Overview**

---

Student will need to learn shop safety and plan wood projects. Students will be selecting and identifying materials. Students will have to identify basic tools and use. Students will be preparing proper techniques when using tools.

## **Enduring Understanding**

---

Students will understand...

- Woodshop Safety
- Planning wood projects
- Selecting and Identifying Materials

## **Essential Questions**

---

- How does planning and thinking put into projects insure a good end product?
- What is the importance of safety?
- Why is safety needed in a school setting?
- How do you correctly operate machinery?
- What is the purpose of machine woodworking?
- What is the purpose of a sander?

## **Exit Skills**

---

By the end of Unit 1, the student should be able to:

- Understand the safety protocols that must be followed when using equipment
- Operate and use entry level equipment
- Comprehend how to hold items in a vise
- Obtain basic knowledge of how to operate all equipment

## **New Jersey Student Learning Standards (NJSL-S)**

---

9.3.12.AC	Architecture & Construction
9.3.12.AC.1	Use vocabulary, symbols and formulas common to architecture and construction.
9.3.12.AC.2	Use architecture and construction skills to create and manage a project.
9.3.12.AC.3	Comply with regulations and applicable codes to establish and manage a legal and safe workplace.
9.3.12.AC.4	Evaluate the nature and scope of the Architecture & Construction Career Cluster and the role of architecture and construction in society and the economy.
9.3.12.AC.5	Describe the roles, responsibilities, and relationships found in the architecture and construction trades and professions, including labor/management relationships.
9.3.12.AC.6	Read, interpret and use technical drawings, documents and specifications to plan a project.
9.3.12.AC.7	Describe career opportunities and means to achieve those opportunities in each of the Architecture & Construction Career Pathways.
9.3.12.AC-CST	Construction

## **Interdisciplinary Connections**

---

	Key Ideas and Details
LA.RL.11-12.1	Cite strong and thorough textual evidence and make relevant connections to support analysis of what the text says explicitly as well as inferences drawn from the text, including determining where the text leaves matters uncertain.
LA.RL.11-12.2	Determine two or more themes or central ideas of a text and analyze their development over the course of the text, including how they interact and build on one another to produce a complex account; provide an objective summary of the text.
LA.RL.11-12.3	Analyze the impact of the author's choices regarding how to develop and relate elements of a story or drama (e.g., where a story is set, how the action is ordered, how the characters are introduced and developed).
	Key Ideas and Details
LA.RI.11-12.1	Accurately cite strong and thorough textual evidence, (e.g., via discussion, written response, etc.), to support analysis of what the text says explicitly as well as inferentially, including determining where the text leaves matters uncertain.
LA.RI.11-12.3	Analyze a complex set of ideas or sequence of events and explain how specific individuals, ideas, or events interact and develop over the course of the text.
MA.A-REI.B.3	Solve linear equations and inequalities in one variable, including equations with coefficients represented by letters.

MA.A-REI.B.4	Solve quadratic equations in one variable.
MA.A-REI.C	Solve systems of equations Comprehension and Collaboration
LA.SL.11-12.1	Initiate and participate effectively in a range of collaborative discussions (one-on-one, in groups, and teacher-led) with peers on grades 11–12 topics, texts, and issues, building on others’ ideas and expressing their own clearly and persuasively.
LA.SL.11-12.1.A	Come to discussions prepared, having read and researched material under study; explicitly draw on that preparation by referring to evidence from texts and other research on the topic or issue to stimulate a thoughtful, well reasoned exchange of ideas.
LA.SL.11-12.1.B	Collaborate with peers to promote civil, democratic discussions and decision-making, set clear goals and assessments (e.g., student developed rubrics), and establish individual roles as needed.

## Learning Objectives

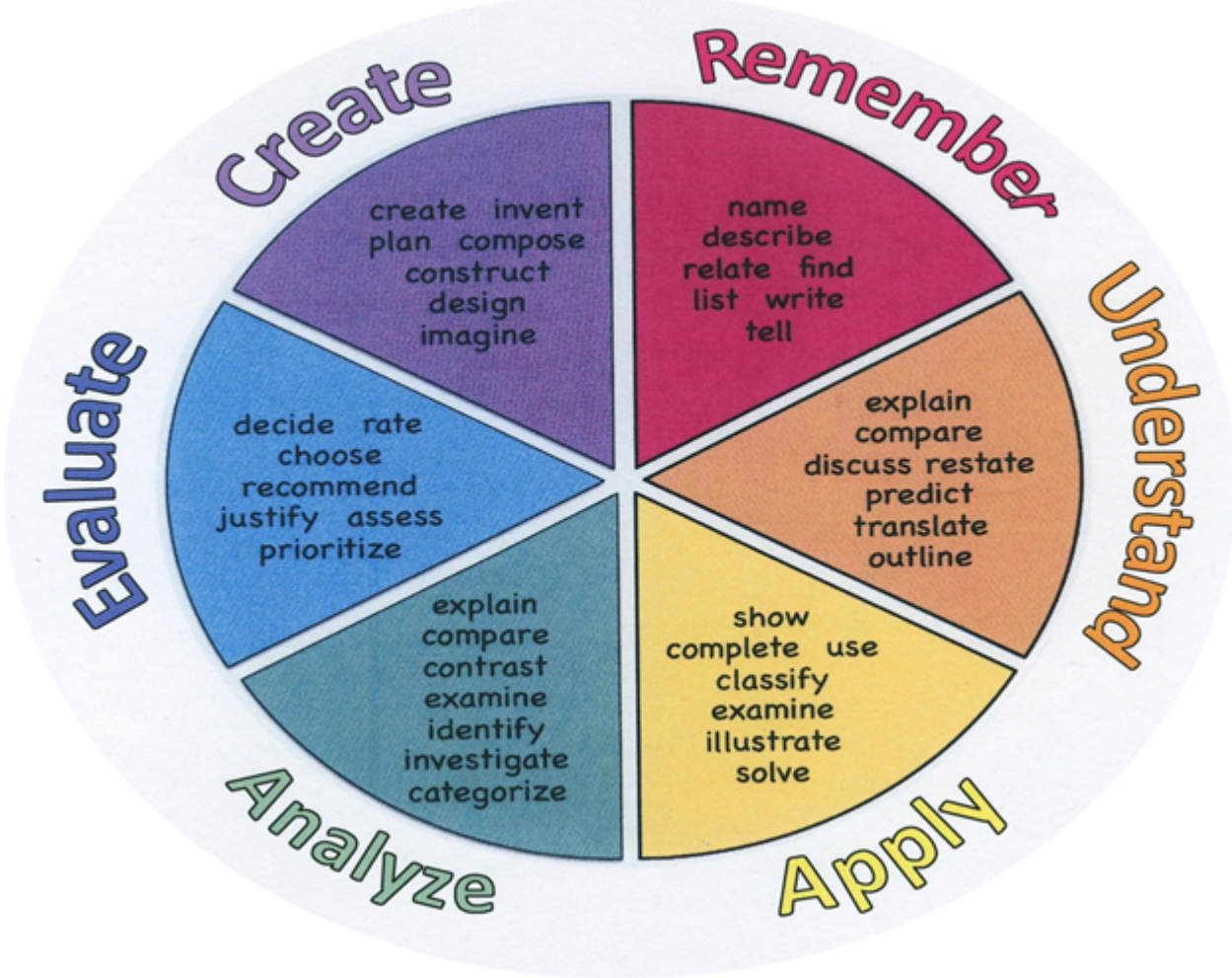
---

Students will be able to...

- Comprehend the basic tool functions for beginning carpenters
- Develop the proper handling of tools in the workplace
- Organize time preparation when setting up and breaking down class
- Describe functions of entry level tools
- Distinguish safety protocols in the classroom

Remember	Understand	Apply	Analyze	Evaluate	Create
Choose	Classify	Choose	Categorize	Appraise	Combine
Describe	Defend	Dramatize	Classify	Judge	Compose
Define	Demonstrate	Explain	Compare	Criticize	Construct
Label	Distinguish	Generalize	Differentiate	Defend	Design
List	Explain	Judge	Distinguish	Compare	Develop
Locate	Express	Organize	Identify	Assess	Formulate
Match	Extend	Paint	Infer	Conclude	Hypothesize
Memorize	Give Examples	Prepare	Point out	Contrast	Invent
Name	Illustrate	Produce	Select	Critique	Make
Omit	Indicate	Select	Subdivide	Determine	Originate
Recite	Interrelate	Show	Survey	Grade	Organize
Select	Interpret	Sketch	Arrange	Justify	Plan
State	Infer	Solve	Breakdown	Measure	Produce
Count	Match	Use	Combine	Rank	Role Play
Draw	Paraphrase	Add	Detect	Rate	Drive
Outline	Represent	Calculate	Diagram	Support	Devise
Point	Restate	Change	Discriminate	Test	Generate
Quote	Rewrite	Classify	Illustrate		Integrate
Recall	Select	Complete	Outline		Prescribe
Recognize	Show	Compute	Point out		Propose
Repeat	Summarize	Discover	Separate		Reconstruct
Reproduce	Tell	Divide			Revise

	Translate Associate Compute Convert Discuss Estimate Extrapolate Generalize Predict	Examine Graph Interpolate Manipulate Modify Operate Subtract			Rewrite Transform
--	---	--	--	--	----------------------



**Suggested Activities & Best Practices**

- Students will learn shop safety in machine woodworking
- Students will begin planning wood projects for creation
- Students will be given quizzes and hands on instruction on how to use all machines in classroom

## **Assessment Evidence - Checking for Understanding (CFU)**

---

-Unit test-summative assessment

-Admit/Exit tickets-formative assessment

-Written reports-alternate assessment

-benchmark assessments (see below)

-Students will be given quizzes on safety and operation techniques on woodworking machines

-Students will self assess project steps prior to cutting material

-Students will describe and define equipment parts for operation

- Admit Tickets
- Anticipation Guide
- Common Benchmarks
- Compare & Contrast
- Create a Multimedia Poster
- DBQ's
- Define
- Describe
- Evaluate

- Evaluation rubrics
- Exit Tickets
- Explaining
- Fist- to-Five or Thumb-Ometer
- Illustration
- Journals
- KWL Chart
- Learning Center Activities
- Multimedia Reports
- Newspaper Headline
- Outline
- Question Stems
- Quickwrite
- Quizzes
- Red Light, Green Light
- Self- assessments
- Socratic Seminar
- Study Guide
- Surveys
- Teacher Observation Checklist
- Think, Pair, Share
- Think, Write, Pair, Share
- Top 10 List
- Unit review/Test prep
- Unit tests
- Web-Based Assessments
- Written Reports

## **Primary Resources & Materials**

---

Basic Woodworking Fundamentals- Wilcox Company

Desktop PC

Internet

## **Ancillary Resources**

---



YouTube Training Video

Scholarly Articles and Videos

Media Center

## **Technology Infusion**

---

Hardware (Ex. Hammer, Screwdriver, Sander, Wrench)-Students will use all tools to complete and build projects

Desktop PC-Students will use computers to update knowledge on equipment used in room

Vise-Students will use the vise to ensure a more stable cutting service

Electronic Measuring Tape-Students will use this to get accurate measurements for all wood cutting

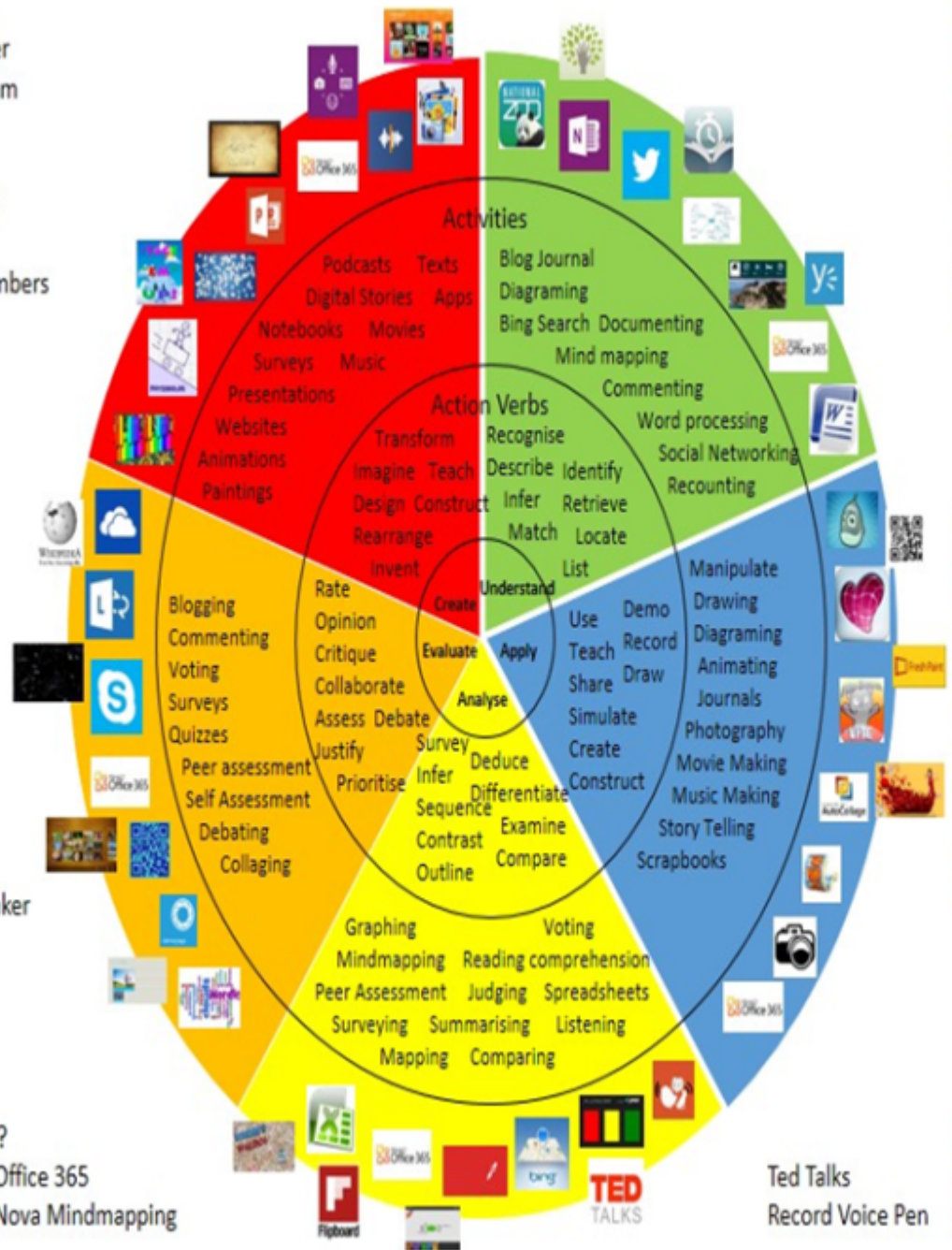
# Win 8.1 Apps/Tools Pedagogy Wheel

Podcasts  
 Photostory 3  
 Kid Story Builder  
 Music Maker Jam  
 Paint A Story  
 Office 365  
 MS PowerPoint  
 Stack 'Em Up  
 NqSquared Numbers  
 Physamajig  
 Xylophone 8

Wikipedia  
 Skydrive  
 Lync  
 SkyMap  
 Skype  
 Office 365  
 Puzzle Touch  
 Easy QR  
 Memorylage  
 Life Moments  
 Word Cloud Maker

Where's Waldo?  
 MS Excel  
 Flipboard  
 Office 365  
 Nova Mindmapping

Ted Talks  
 Record Voice Pen



Originally taken from <http://www.coetail.com/vzimmer/files/2013/02/IPadagogy-Wheel.001.jpg>  
 And adapted for Windows 8.1 devices by Charlotte Beckhurst @CharBeckhurst



## Alignment to 21st Century Skills & Technology

---

CRP.K-12.CRP1	Act as a responsible and contributing citizen and employee.
CRP.K-12.CRP2	Apply appropriate academic and technical skills.
CRP.K-12.CRP2.1	Career-ready individuals readily access and use the knowledge and skills acquired through experience and education to be more productive. They make connections between abstract concepts with real-world applications, and they make correct insights about when it is appropriate to apply the use of an academic skill in a workplace situation.
CRP.K-12.CRP4	Communicate clearly and effectively and with reason.
CRP.K-12.CRP4.1	Career-ready individuals communicate thoughts, ideas, and action plans with clarity, whether using written, verbal, and/or visual methods. They communicate in the workplace with clarity and purpose to make maximum use of their own and others' time. They are excellent writers; they master conventions, word choice, and organization, and use effective tone and presentation skills to articulate ideas. They are skilled at interacting with others; they are active listeners and speak clearly and with purpose. Career-ready individuals think about the audience for their communication and prepare accordingly to ensure the desired outcome.
CRP.K-12.CRP6	Demonstrate creativity and innovation.
CRP.K-12.CRP6.1	Career-ready individuals regularly think of ideas that solve problems in new and different ways, and they contribute those ideas in a useful and productive manner to improve their organization. They can consider unconventional ideas and suggestions as solutions to issues, tasks or problems, and they discern which ideas and suggestions will add greatest value. They seek new methods, practices, and ideas from a variety of sources and seek to apply those ideas to their own workplace. They take action on their ideas and understand how to bring innovation to an organization.
CAEP.9.2.12.C.3	Identify transferable career skills and design alternate career plans.
CAEP.9.2.12.C.5	Research career opportunities in the United States and abroad that require knowledge of world languages and diverse cultures.
TECH.8.1.12.A	Technology Operations and Concepts: Students demonstrate a sound understanding of technology concepts, systems and operations.
TECH.8.1.12.A.CS1	Understand and use technology systems.
TECH.8.1.12.A.CS2	Select and use applications effectively and productively.
TECH.8.1.12.B.CS1	Apply existing knowledge to generate new ideas, products, or processes.
TECH.8.1.12.B.CS2	Create original works as a means of personal or group expression.

## 21st Century Skills/Interdisciplinary Themes

---

- Communication and Collaboration
- Creativity and Innovation
- Critical thinking and Problem Solving
- ICT (Information, Communications and Technology) Literacy
- Information Literacy
- Life and Career Skills
- Media Literacy

## 21st Century Skills

---

- Civic Literacy
- Environmental Literacy
- Financial, Economic, Business and Entrepreneurial Literacy
- Global Awareness
- Health Literacy

## Differentiation

---

- Students will work in small groups when operating all machinery and identify parts within each piece of equipment
- Students will preview all vocabulary related to equipment and operation of equipment
- Students will be given extra time to complete all projects assigned when needed

### Differentiations:

- Small group instruction
- Small group assignments
- Extra time to complete assignments
- Pairing oral instruction with visuals
- Repeat directions
- Use manipulatives
- Center-based instruction
- Token economy
- Study guides
- Teacher reads assessments allowed
- Scheduled breaks
- Rephrase written directions
- Multisensory approaches
- Additional time
- Preview vocabulary
- Preview content & concepts

- Story guides
- Behavior management plan
- Highlight text
- Student(s) work with assigned partner
- Visual presentation
- Assistive technology
- Auditory presentations
- Large print edition
- Dictation to scribe
- Small group setting

#### **Hi-Prep Differentiations:**

- Alternative formative and summative assessments
- Choice boards
- Games and tournaments
- Group investigations
- Guided Reading
- Independent research and projects
- Interest groups
- Learning contracts
- Leveled rubrics
- Literature circles
- Multiple intelligence options
- Multiple texts
- Personal agendas
- Project-based learning
- Problem-based learning
- Stations/centers
- Think-Tac-Toes
- Tiered activities/assignments
- Tiered products
- Varying organizers for instructions

#### **Lo-Prep Differentiations**

- Choice of books or activities
- Cubing activities
- Exploration by interest
- Flexible grouping
- Goal setting with students
- Jigsaw
- Mini workshops to re-teach or extend skills
- Open-ended activities
- Think-Pair-Share
- Reading buddies
- Varied journal prompts
- Varied supplemental materials

## **Special Education Learning (IEP's & 504's)**

---

-Students will be given extra time on quizzes related to machinery until they master each piece of equipment

-Student will work with assigned partners and provide assistance when using machines for cutting and staining

- printed copy of board work/notes provided
- additional time for skill mastery
- assistive technology
- behavior management plan
- Center-Based Instruction
- check work frequently for understanding
- computer or electronic device utilizes
- extended time on tests/ quizzes
- have student repeat directions to check for understanding
- highlighted text visual presentation
- modified assignment format
- modified test content
- modified test format
- modified test length
- multiple test sessions
- multi-sensory presentation
- preferential seating
- preview of content, concepts, and vocabulary
- Provide modifications as dictated in the student's IEP/504 plan
- reduced/shortened reading assignments
- Reduced/shortened written assignments
- secure attention before giving instruction/directions
- shortened assignments
- student working with an assigned partner
- teacher initiated weekly assignment sheet
- Use open book, study guides, test prototypes

## **English Language Learning (ELL)**

---

-Students will use Youtube videos to review all equipment operations and safety protocol

-Students will be tutored by peers when operating equipment and hand tools

- teaching key aspects of a topic. Eliminate nonessential information
- using videos, illustrations, pictures, and drawings to explain or clarify
- allowing products (projects, timelines, demonstrations, models, drawings, dioramas, poster boards, charts, graphs, slide shows, videos, etc.) to demonstrate student's learning;
- allowing students to correct errors (looking for understanding)
- allowing the use of note cards or open-book during testing
- decreasing the amount of work presented or required
- having peers take notes or providing a copy of the teacher's notes
- modifying tests to reflect selected objectives
- providing study guides
- reducing or omitting lengthy outside reading assignments
- reducing the number of answer choices on a multiple choice test
- tutoring by peers
- using computer word processing spell check and grammar check features
- using true/false, matching, or fill in the blank tests in lieu of essay tests

## **At Risk**

---

-Students will use Youtube videos to review all equipment operations and safety protocol

-Students will be tutored by peers when operating equipment and hand tools

- allowing students to correct errors (looking for understanding)
- teaching key aspects of a topic. Eliminate nonessential information
- allowing products (projects, timelines, demonstrations, models, drawings, dioramas, poster boards, charts, graphs, slide shows, videos, etc.) to demonstrate student's learning
- allowing students to select from given choices
- allowing the use of note cards or open-book during testing
- collaborating (general education teacher and specialist) to modify vocabulary, omit or modify items to reflect objectives for the student, eliminate sections of the test, and determine how the grade will be determined prior to giving the test.
- decreasing the amount of work presented or required
- having peers take notes or providing a copy of the teacher's notes
- marking students' correct and acceptable work, not the mistakes
- modifying tests to reflect selected objectives
- providing study guides
- reducing or omitting lengthy outside reading assignments
- reducing the number of answer choices on a multiple choice test
- tutoring by peers
- using authentic assessments with real-life problem-solving
- using true/false, matching, or fill in the blank tests in lieu of essay tests
- using videos, illustrations, pictures, and drawings to explain or clarify

## **Talented and Gifted Learning (T&G)**

---

-Students will debate issues that arise in measurement and shop safety

-Students will work at a faster pace when using the basic tools in the classroom

- Above grade level placement option for qualified students
- Advanced problem-solving
- Allow students to work at a faster pace
- Cluster grouping
- Complete activities aligned with above grade level text using Benchmark results
- Create a blog or social media page about their unit
- Create a plan to solve an issue presented in the class or in a text
- Debate issues with research to support arguments
- Flexible skill grouping within a class or across grade level for rigor
- Higher order, critical & creative thinking skills, and discovery
- Multi-disciplinary unit and/or project
- Teacher-selected instructional strategies that are focused to provide challenge, engagement, and growth opportunities
- Utilize exploratory connections to higher-grade concepts
- Utilize project-based learning for greater depth of knowledge

## **Sample Lesson**

---

**Unit Name:** Safety and Fundamentals in Machine Woodworking. Students will be prepared to operate all machinery safely and be able to identify part of equipment.

**NJSLS:** See Below

### **Interdisciplinary Connection:**

LA.RI.11-12.9- Analyze and reflect on (e.g., practical knowledge, historical/cultural context, and background knowledge) documents of historical and literary significance for their themes, purposes and rhetorical features, including primary source documents relevant to U.S. and/or global history.

LA.RL.11-12.9- Demonstrate knowledge of and reflect on (e.g., practical knowledge, historical/cultural context, and background knowledge) eighteenth-, nineteenth- and early twentieth-century foundational works of literature, including how two or more texts from the same period treat similar themes or topics.

LA.SL.11-12.1- Initiate and participate effectively in a range of collaborative discussions (one-on-one, in groups, and teacher-led) with peers on grades 11–12 topics, texts, and issues, building on others' ideas and expressing their own clearly and persuasively.

### **Statement of Objective:**



SWDAT Analyze and develop the proper safety techniques of each piece of equipment over a two week period. Each student will have to meet 75% of the safety procedures.

**Anticipatory Set/Do Now:**

Do Now: Name five safety procedures used in the wood working lab and define what the purpose is of the safety protocol.

**Learning Activity:**

Students will demonstrate the safety techniques when operating all hand tools in the shop. Protective eyewear will be shown to all students and shown where they will be stored for each day.

**Student Assessment/CFU's:**

Students will be given quizzes on each specific piece tool used in class. The student will then present a demo of how to safely handle all the tools in the classroom.

**Materials:**

Textbook, Computers, Hardware

**21st Century Themes and Skills:**

Domain 3 A,B,C instruction.

Communication & Collaboration, Information Literacy, Media Literacy, Creativity and Innovation, Critical Thinking & Problem Solving, Information, Communications, and Technology Literacy

**Differentiation:**

Visual Learners, Hands on Activities, Group/Peer Instruction, Direct Instruction, Peer to peer instruction

**Integration of Technology:**

Students will compare and contrast each tool used in during each project. The students will use the computers to identify safety and operation of how and why to use a vise.

9.3.12.AC	Architecture & Construction
9.3.12.AC.1	Use vocabulary, symbols and formulas common to architecture and construction.
9.3.12.AC.2	Use architecture and construction skills to create and manage a project.
9.3.12.AC.3	Comply with regulations and applicable codes to establish and manage a legal and safe workplace.
9.3.12.AC.4	Evaluate the nature and scope of the Architecture & Construction Career Cluster and the role of architecture and construction in society and the economy.
9.3.12.AC.5	Describe the roles, responsibilities, and relationships found in the architecture and construction trades and professions, including labor/management relationships.
9.3.12.AC.6	Read, interpret and use technical drawings, documents and specifications to plan a project.
9.3.12.AC.7	Describe career opportunities and means to achieve those opportunities in each of the Architecture & Construction Career Pathways.

