

Unit 3- Material Types and Hand Tools Copied from: Cabinetmaking & Furniture Design, Copied on: 02/21/22

Content Area: **CTE**
Course(s): **Cabinetmaking & Furniture Design**
Time Period: **JanFeb**
Length: **30 Days**
Status: **Published**

Title Section

Department of Curriculum and Instruction



Belleville Public Schools

Curriculum Guide

Unit 3-Material Types and Hand Tools

Belleville Board of Education

102 Passaic Avenue

Belleville, NJ 07109

Prepared by: Frank Longo

Dr. Richard Tomko, Ph.D., M.J., Superintendent of Schools

Ms. LucyAnn Demikoff, Director of Curriculum and Instruction K-12

Ms. Nicole Shanklin, Director of Elementary Education K-8, ESL Coordinator K-12

Mr. George Droste, Director of Secondary Education

Board Approved: September 23, 2019

Unit Overview

Students will identify process of lumber production. Students will identify characteristics used in lumber and plywood grading. Students will differentiate between hardwoods and softwoods. Students will learn the use of orbital and belt sander. Students will process the techniques for the use of equipment.

Enduring Understanding

Student will be able to understand...

- The basis for all woodworking materials
- How to properly use materials and there applications
- How to operate tools and safety protocol
- Specific functions of tools and there application to manufacturing
- Guidelines that must be adhered to in the workplace

Essential Questions

- How do we identify different types of lumber?
- What are methods of manufacturing lumber?
- What tools are used for layout and measurement work?
- What application each hand tool represents in the manufacturing process?

Exit Skills

By the end of Unit 3, the student should be able to:

- Understand the safety and protocol when operating equipment
- Operations and use of equipment, specific to what is being manufactured
- Know how measure and what tools are needed for layout
- Know types of lumber
- Know how to differentiate between soft and hardwoods

New Jersey Student Learning Standards (NJSLS-S)

9.3.12.AC	Architecture & Construction
9.3.12.AC.1	Use vocabulary, symbols and formulas common to architecture and construction.
9.3.12.AC.2	Use architecture and construction skills to create and manage a project.
9.3.12.AC.3	Comply with regulations and applicable codes to establish and manage a legal and safe workplace.
9.3.12.AC.4	Evaluate the nature and scope of the Architecture & Construction Career Cluster and the role of architecture and construction in society and the economy.
9.3.12.AC.5	Describe the roles, responsibilities, and relationships found in the architecture and construction trades and professions, including labor/management relationships.
9.3.12.AC.6	Read, interpret and use technical drawings, documents and specifications to plan a project.
9.3.12.AC.7	Describe career opportunities and means to achieve those opportunities in each of the Architecture & Construction Career Pathways.
9.3.12.AC-CST	Construction

Interdisciplinary Connections

LA.RL.11-12.1	Cite strong and thorough textual evidence and make relevant connections to support analysis of what the text says explicitly as well as inferences drawn from the text, including determining where the text leaves matters uncertain.
LA.RL.11-12.2	Determine two or more themes or central ideas of a text and analyze their development over the course of the text, including how they interact and build on one another to produce a complex account; provide an objective summary of the text.
LA.RL.11-12.3	Analyze the impact of the author's choices regarding how to develop and relate elements of a story or drama (e.g., where a story is set, how the action is ordered, how the characters are introduced and developed).
LA.RL.11-12.7	Analyze multiple interpretations of a story, drama, or poem (e.g., recorded or live production of a play or recorded novel or poetry), evaluating how each version interprets the source text. (e.g., Shakespeare and other authors.)
LA.RL.11-12.8	(Not applicable to literature)
LA.RL.11-12.9	Demonstrate knowledge of and reflect on (e.g., practical knowledge, historical/cultural context, and background knowledge) eighteenth-, nineteenth- and early twentieth-century foundational works of literature, including how two or more texts from the same period treat similar themes or topics.
MA.A-REI.C	Solve systems of equations
LA.W.11-12.4	Produce clear and coherent writing in which the development, organization, and style are appropriate to task, purpose, and audience. (Grade-specific expectations for writing types are defined in standards 1–3 above.)
MA.A-REI.D	Represent and solve equations and inequalities graphically
LA.W.11-12.5	Develop and strengthen writing as needed by planning, revising, editing, rewriting, trying a new approach, or consulting a style manual (such as MLA or APA Style), focusing on addressing what is most significant for a specific purpose and audience.
LA.W.11-12.6	Use technology, including the Internet, to produce, share, and update individual or shared writing products in response to ongoing feedback, including new arguments or information.

Learning Objectives

Students will be able to...

Design and create a project after using sanders and drills

Develop the fundamentals on how to use equipment

Understand the safety techniques and operations of equipment

Organize proper measurements used in order to drill proper holes

Remember	Understand	Apply	Analyze	Evaluate	Create
Choose	Classify	Choose	Categorize	Appraise	Combine

Describe	Defend	Dramatize	Classify	Judge	Compose
Define	Demonstrate	Explain	Compare	Criticize	Construct
Label	Distinguish	Generalize	Differentiate	Defend	Design
List	Explain	Judge	Distinguish	Compare	Develop
Locate	Express	Organize	Identify	Assess	Formulate
Match	Extend	Paint	Infer	Conclude	Hypothesize
Memorize	Give Examples	Prepare	Point out	Contrast	Invent
Name	Illustrate	Produce	Select	Critique	Make
Omit	Indicate	Select	Subdivide	Determine	Originate
Recite	Interrelate	Show	Survey	Grade	Organize
Select	Interpret	Sketch	Arrange	Justify	Plan
State	Infer	Solve	Breakdown	Measure	Produce
Count	Match	Use	Combine	Rank	Role Play
Draw	Paraphrase	Add	Detect	Rate	Drive
Outline	Represent	Calculate	Diagram	Support	Devise
Point	Restate	Change	Discriminate	Test	Generate
Quote	Rewrite	Classify	Illustrate		Integrate
Recall	Select	Complete	Outline		Prescribe
Recognize	Show	Compute	Point out		Propose
Repeat	Summarize	Discover	Separate		Reconstruct
Reproduce	Tell	Divide			Revise
	Translate	Examine			Rewrite
	Associate	Graph			Transform
	Compute	Interpolate			
	Convert	Manipulate			
	Discuss	Modify			
	Estimate	Operate			
	Extrapolate	Subtract			
	Generalize				
	Predict				



Suggested Activities & Best Practices

- Students will be shown proper guidelines to be followed in the workplace
- Students will be shown different types of specific wood
- Students will understand the difference between hardwoods and softwoods

Assessment Evidence - Checking for Understanding (CFU)

- Students will be given a quiz on different types of woods
- Students will describe the different features between hardwood and softwoods-benchmark assessment
- Students will evaluate the different methods of manufacturing lumber-benchmark assessment
- Unit test-summative assessment
- Think, pair, share-formative assessment
- Written reports-alternate assessment

- Admit Tickets
- Anticipation Guide
- Common Benchmarks
- Compare & Contrast
- Create a Multimedia Poster
- DBQ's
- Define
- Describe
- Evaluate
- Evaluation rubrics
- Exit Tickets
- Explaining
- Fist- to-Five or Thumb-Ometer
- Illustration
- Journals
- KWL Chart
- Learning Center Activities
- Multimedia Reports
- Newspaper Headline
- Outline
- Question Stems
- Quickwrite
- Quizzes
- Red Light, Green Light
- Self- assessments
- Socratic Seminar
- Study Guide

- Surveys
- Teacher Observation Checklist
- Think, Pair, Share
- Think, Write, Pair, Share
- Top 10 List
- Unit review/Test prep
- Unit tests
- Web-Based Assessments
- Written Reports

Primary Resources & Materials

Basic Woodworking Fundamentals- Wilcox Company

Desktop PC

Internet

Ancillary Resources

YouTube Training Video

Scholarly Articles and Videos

Media Center

Technology Infusion

Hardware (Ex. Hammer, Screwdriver, Sander, Wrench)

Desktop PC-Used to playback operation and safety of equipment

Vise-Students will use to hold and support wood when cuttings or drilling

Measuring Tape-Students will use for measurements of furniture

Belt Sander-Students will use sander to smooth out ruff edges on wood projects

Drill Press-Drill press will allow students to create holes for construction

Hand Drill-Students will use to drill holes for projects

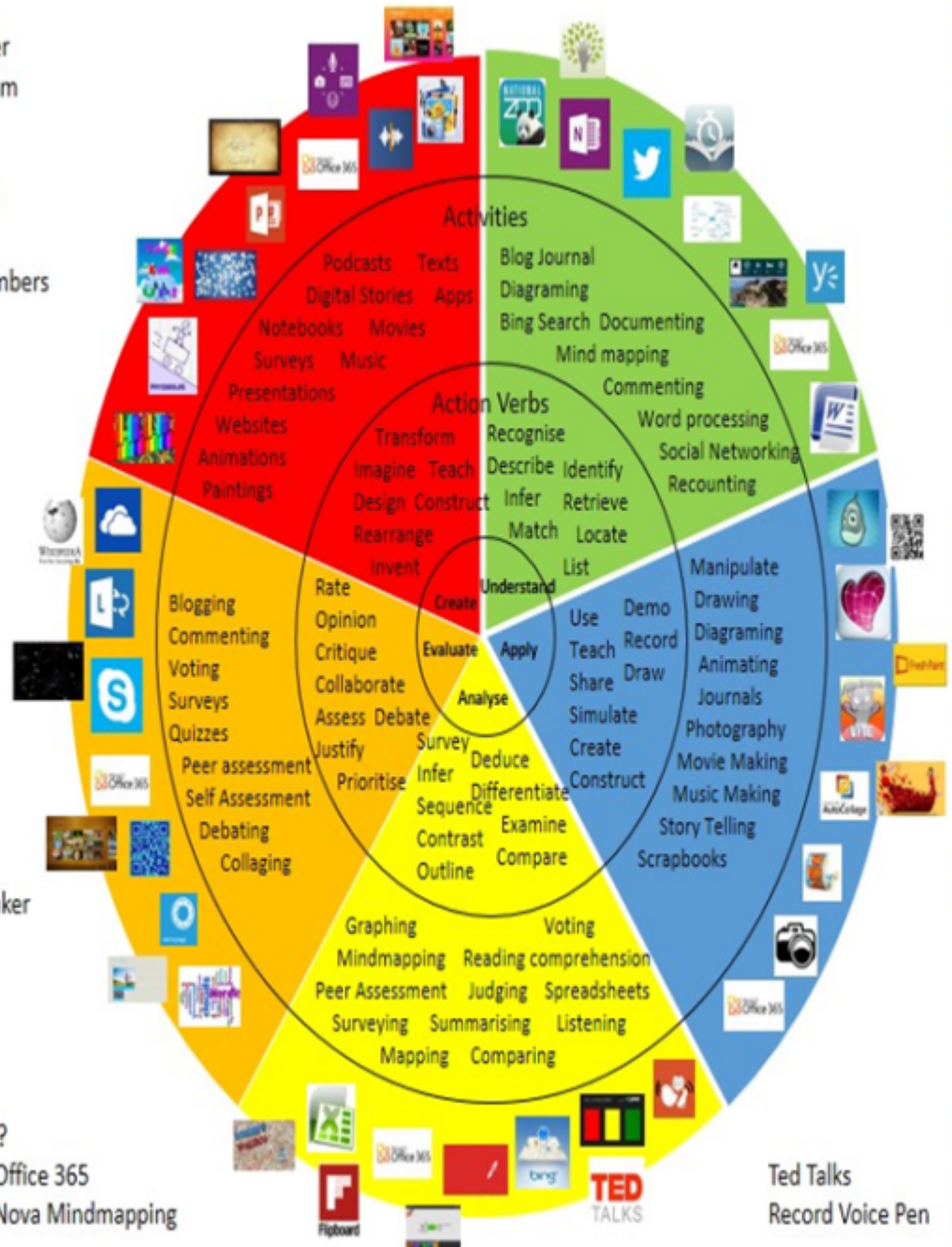
Win 8.1 Apps/Tools Pedagogy Wheel

Podcasts
Photostory 3
Kid Story Builder
Music Maker Jam
Paint A Story
Office 365
MS PowerPoint
Stack 'Em Up
NqSquared Numbers
Physamajig
Xylophone 8

Wikipedia
Skydrive
Lync
SkyMap
Skype
Office 365
Puzzle Touch
Easy QR
Memorylage
Life Moments
Word Cloud Maker

Where's Waldo?
MS Excel
Flipboard
Office 365
Nova Mindmapping

Ted Talks
Record Voice Pen



Alignment to 21st Century Skills & Technology

CRP.K-12.CRP1	Act as a responsible and contributing citizen and employee.
CRP.K-12.CRP1.1	Career-ready individuals understand the obligations and responsibilities of being a member of a community, and they demonstrate this understanding every day through their interactions with others. They are conscientious of the impacts of their decisions on others and the environment around them. They think about the near-term and long-term consequences of their actions and seek to act in ways that contribute to the betterment of their teams, families, community and workplace. They are reliable and consistent in going beyond the minimum expectation and in participating in activities that serve the greater good.
CRP.K-12.CRP3	Attend to personal health and financial well-being.
CRP.K-12.CRP3.1	Career-ready individuals understand the relationship between personal health, workplace performance and personal well-being; they act on that understanding to regularly practice healthy diet, exercise and mental health activities. Career-ready individuals also take regular action to contribute to their personal financial well-being, understanding that personal financial security provides the peace of mind required to contribute more fully to their own career success.
CRP.K-12.CRP4	Communicate clearly and effectively and with reason.
CRP.K-12.CRP4.1	Career-ready individuals communicate thoughts, ideas, and action plans with clarity, whether using written, verbal, and/or visual methods. They communicate in the workplace with clarity and purpose to make maximum use of their own and others' time. They are excellent writers; they master conventions, word choice, and organization, and use effective tone and presentation skills to articulate ideas. They are skilled at interacting with others; they are active listeners and speak clearly and with purpose. Career-ready individuals think about the audience for their communication and prepare accordingly to ensure the desired outcome.
CRP.K-12.CRP6	Demonstrate creativity and innovation.
CAEP.9.2.12.C.3	Identify transferable career skills and design alternate career plans.
CAEP.9.2.12.C.5	Research career opportunities in the United States and abroad that require knowledge of world languages and diverse cultures.
TECH.8.1.12.A	Technology Operations and Concepts: Students demonstrate a sound understanding of technology concepts, systems and operations.
TECH.8.1.12.A.CS1	Understand and use technology systems.
TECH.8.1.12.A.CS2	Select and use applications effectively and productively.
TECH.8.1.12.B.2	Apply previous content knowledge by creating and piloting a digital learning game or tutorial.
TECH.8.1.12.B.CS1	Apply existing knowledge to generate new ideas, products, or processes.
TECH.8.1.12.B.CS2	Create original works as a means of personal or group expression.

21st Century Skills/Interdisciplinary Themes

- Communication and Collaboration
- Creativity and Innovation
- Critical thinking and Problem Solving
- ICT (Information, Communications and Technology) Literacy
- Information Literacy
- Life and Career Skills
- Media Literacy

21st Century Skills

- Civic Literacy
- Environmental Literacy
- Financial, Economic, Business and Entrepreneurial Literacy
- Global Awareness
- Health Literacy

Differentiation

-Students will work with small groups to assist in supporting cuts and measurements for furniture production

-Additional time will be given all students when using equipment and staining all projects

Differentiations:

- Small group instruction
- Small group assignments
- Extra time to complete assignments
- Pairing oral instruction with visuals
- Repeat directions
- Use manipulatives
- Center-based instruction
- Token economy
- Study guides
- Teacher reads assessments allowed
- Scheduled breaks
- Rephrase written directions
- Multisensory approaches

- Additional time
- Preview vocabulary
- Preview content & concepts
- Story guides
- Behavior management plan
- Highlight text
- Student(s) work with assigned partner
- Visual presentation
- Assistive technology
- Auditory presentations
- Large print edition
- Dictation to scribe
- Small group setting

Hi-Prep Differentiations:

- Alternative formative and summative assessments
- Choice boards
- Games and tournaments
- Group investigations
- Guided Reading
- Independent research and projects
- Interest groups
- Learning contracts
- Leveled rubrics
- Literature circles
- Multiple intelligence options
- Multiple texts
- Personal agendas
- Project-based learning
- Problem-based learning
- Stations/centers
- Think-Tac-Toes
- Tiered activities/assignments
- Tiered products
- Varying organizers for instructions

Lo-Prep Differentiations

- Choice of books or activities
- Cubing activities
- Exploration by interest
- Flexible grouping
- Goal setting with students
- Jigsaw
- Mini workshops to re-teach or extend skills
- Open-ended activities
- Think-Pair-Share
- Reading buddies
- Varied journal prompts
- Varied supplemental materials

Special Education Learning (IEP's & 504's)

- Students will be given extra time as needed to complete projects and staining

- Students will repeat directions as needed during the construction phases of development

- Students can utilize computers for assistance in developing an understanding in construction

- printed copy of board work/notes provided
- additional time for skill mastery
- assistive technology
- behavior management plan
- Center-Based Instruction
- check work frequently for understanding
- computer or electronic device utilizes
- extended time on tests/ quizzes
- have student repeat directions to check for understanding
- highlighted text visual presentation
- modified assignment format
- modified test content
- modified test format
- modified test length
- multi-sensory presentation
- multiple test sessions
- preferential seating
- preview of content, concepts, and vocabulary
- Provide modifications as dictated in the student's IEP/504 plan
- reduced/shortened reading assignments
- Reduced/shortened written assignments
- secure attention before giving instruction/directions
- shortened assignments
- student working with an assigned partner
- teacher initiated weekly assignment sheet
- Use open book, study guides, test prototypes

English Language Learning (ELL)

Students will use images and videos to assist with operation of machinery and to produce ideas on products to create

-Students will be allowed to correct all errors on products being constructed throughout the class until mastery occurs

- teaching key aspects of a topic. Eliminate nonessential information
- using videos, illustrations, pictures, and drawings to explain or clarify
- allowing products (projects, timelines, demonstrations, models, drawings, dioramas, poster boards, charts, graphs, slide shows, videos, etc.) to demonstrate student's learning;
- allowing students to correct errors (looking for understanding)
- allowing the use of note cards or open-book during testing
- decreasing the amount of work presented or required
- having peers take notes or providing a copy of the teacher's notes
- modifying tests to reflect selected objectives
- providing study guides
- reducing or omitting lengthy outside reading assignments
- reducing the number of answer choices on a multiple choice test
- tutoring by peers
- using computer word processing spell check and grammar check features
- using true/false, matching, or fill in the blank tests in lieu of essay tests

At Risk

-Students will use images and videos to assist with operation of machinery and to produce ideas on products to create

-Students will be allowed to correct all errors on products being constructed throughout the class until mastery occurs

- allowing students to correct errors (looking for understanding)
- teaching key aspects of a topic. Eliminate nonessential information
- allowing products (projects, timelines, demonstrations, models, drawings, dioramas, poster boards, charts, graphs, slide shows, videos, etc.) to demonstrate student's learning
- allowing students to select from given choices
- allowing the use of note cards or open-book during testing
- collaborating (general education teacher and specialist) to modify vocabulary, omit or modify items to reflect objectives for the student, eliminate sections of the test, and determine how the grade will be determined prior to giving the test.
- decreasing the amount of work presented or required
- having peers take notes or providing a copy of the teacher's notes
- marking students' correct and acceptable work, not the mistakes
- modifying tests to reflect selected objectives

- providing study guides
- reducing or omitting lengthy outside reading assignments
- reducing the number of answer choices on a multiple choice test
- tutoring by peers
- using authentic assessments with real-life problem-solving
- using true/false, matching, or fill in the blank tests in lieu of essay tests
- using videos, illustrations, pictures, and drawings to explain or clarify

Talented and Gifted Learning (T&G)

-Students will create a plan to solve issues that arise during construction of cabinets

-Students will work at a faster pace and then can assist peers on future projects

- Above grade level placement option for qualified students
- Advanced problem-solving
- Allow students to work at a faster pace
- Cluster grouping
- Complete activities aligned with above grade level text using Benchmark results
- Create a blog or social media page about their unit
- Create a plan to solve an issue presented in the class or in a text
- Debate issues with research to support arguments
- Flexible skill grouping within a class or across grade level for rigor
- Higher order, critical & creative thinking skills, and discovery
- Multi-disciplinary unit and/or project
- Teacher-selected instructional strategies that are focused to provide challenge, engagement, and growth opportunities
- Utilize exploratory connections to higher-grade concepts
- Utilize project-based learning for greater depth of knowledge

Sample Lesson

Using the template below, please develop a **Sample Lesson** for the first unit only.

Unit Name:

NJSLS:

Interdisciplinary Connection:

Statement of Objective:

Anticipatory Set/Do Now:

Learning Activity:

Student Assessment/CFU's:

Materials:

21st Century Themes and Skills:

Differentiation/Modifications:

Integration of Technology: