

# **Unit 4: Socializing the Individual (Adolescence to Adulthood) Copied from: Sociology, Copied on: 12/15/21**

Content Area: **Social Studies**  
Course(s): **Sociology**  
Time Period: **JanFeb**  
Length: **25 days/11th & 12th grades**  
Status: **Published**

## **Title Section**

## **Department of Curriculum and Instruction**



**Belleville Public Schools**

**Curriculum Guide**

**Sociology, 11th/12th grades**

**Unit 4: Socializaing the Individual (Adolescence to Adulthood)**

**Belleville Board of Education**

**102 Passaic Avenue**

**Belleville, NJ 07109**

Prepared by: Mrs. Christine M Hurta, teacher

Dr. Richard Tomko, Ph.D., M.J., Superintendent of Schools

Ms. LucyAnn Demikoff, Director of Curriculum and Instruction K-12

Ms. Nicole Shanklin, Director of Elementary Education K-8, ESL Coordinator K-12

Mr. Joseph Lepo, Director of Secondary Education

Board Approved: September 23, 2019

## **Unit Overview**

---

Unit 4 examines

- the nature/nurture debate and its effect on personality development
- sociological theories about the development of Self
- the four primary agents of socialization
- adolescence is a time of great change and transition
- dating as well as drug use are societal challenges for adolescents.
- progression of adult development differs between men and women.

## **Enduring Understanding**

---

- Although the nature versus nurture debate has raged for decades, most social scientists believe a blend of the two influences personality.
- The theories of Locke, Cooley, and Mead explain how people are socialized and develop a sense of self.
- Sense of self enables people to form their own status and role in society
- There are four primary agents of socialization in the United States: family, peer group, school and the mass media.
- Resocialization can be a voluntary and involuntary aspect of society and its individuals
- Adolescence is a primary transition into society as well as adulthood.
- Certain sociological rituals as well as taboos are necessary in the development of the adolescent.
- Erikson's Eight stages of development help sociologists understand each step from birth to Late Adulthood.
- The labor force has changed throughout US society.

## **Essential Questions**

---

1. How does social environment influence personality?
2. How does socialization influence the human experience?
3. What are the primary agents of socialization?
4. What are four main factors that affect personality development?
5. What is the history behind the nature vs nurture debate?
6. What are the three theories to explain the development of self?
7. How does our environment affect the presentation of self?
8. What are two kinds of resocialization?
9. How did the concept of adolescence develop?
10. What are the five general characteristics of adolescence?
11. How and why did dating arise in society?
12. How do aspects of society such as drug use and sexual behavior affect teenagers in the US?
13. How do male and female adult development processes differ?
14. How has the composition of the labor force and the organization of work changed over the last century?
15. What physical, mental and emotional changes characterize later adulthood?

## **Exit Skills**

---

By the end of Unit 4,

1. Students should be able to apply domain-specific vocabulary such as sense of self, looking glass self and

resocialization in their various assessments.

2. Students should be able to choose a side to a query and provide logical argument for their choice.
3. Students should be able to deductively use new information and logically apply this evidence to a related problem.
4. Students should be able to inductively gather information and deduce a theory based on their findings.
5. Students should be able to gather information in meaningful clusters and apply their findings to specific problems.

## **New Jersey Student Learning Standards (NJSLS-S)**

---

|                |                                                                                                              |
|----------------|--------------------------------------------------------------------------------------------------------------|
| SOC.9-12.3     | Social Relationships: Self, Groups, and Socialization                                                        |
| SOC.9-12.3.1   | Students will describe the process of socialization across the life course.                                  |
| SOC.9-12.3.1.1 | Primary agents of socialization: family, peers, media, schools, and religion                                 |
| SOC.9-12.3.1.2 | Deviance and conformity                                                                                      |
| SOC.9-12.3.2   | Students will explain the process of the social construction of the self.                                    |
| SOC.9-12.3.2.1 | I & me                                                                                                       |
| SOC.9-12.3.2.2 | Role-taking                                                                                                  |
| SOC.9-12.3.2.3 | Generalized other                                                                                            |
| SOC.9-12.3.2.4 | Identity                                                                                                     |
| SOC.9-12.3.3   | Students will examine the social construction of groups and their impact on the life chances of individuals. |
| SOC.9-12.3.3.1 | Reference groups                                                                                             |
| SOC.9-12.3.3.2 | Primary and secondary groups                                                                                 |
| SOC.9-12.3.3.3 | In-groups and out-groups                                                                                     |
| SOC.9-12.4     | Stratification and Inequality                                                                                |
| SOC.9-12.4.1   | Students will identify common patterns of social inequality.                                                 |
| SOC.9-12.4.1.1 | Privilege                                                                                                    |
| SOC.9-12.4.1.2 | Power                                                                                                        |
| SOC.9-12.4.1.3 | Racial and ethnic inequality                                                                                 |
| SOC.9-12.4.1.4 | Class inequality                                                                                             |
| SOC.9-12.4.1.5 | Gender inequality                                                                                            |
| SOC.9-12.4.2   | Students will analyze the effects of social inequality on groups and individuals.                            |
| SOC.9-12.4.2.1 | Life chances                                                                                                 |
| SOC.9-12.4.2.3 | Inter- and intra-group conflict                                                                              |
| SOC.9-12.4.3   | Students will explain the relationship between social institutions and inequality.                           |
| SOC.9-12.4.3.2 | Potential of institutions to produce, reinforce, or challenge inequality                                     |

|                |                                                        |
|----------------|--------------------------------------------------------|
| SOC.9-12.4.4   | Students will assess responses to social inequality.   |
| SOC.9-12.4.4.1 | Individual responses to inequality                     |
| SOC.9-12.4.4.2 | Group responses to inequality such as social movements |
| SOC.9-12.4.4.3 | Social policy responses to inequality                  |

## Interdisciplinary Connections

---

|                |                                                                                                                                                                                                                                                               |
|----------------|---------------------------------------------------------------------------------------------------------------------------------------------------------------------------------------------------------------------------------------------------------------|
| LA.RH.9-10.1   | Accurately cite strong and thorough textual evidence, to support analysis of primary and secondary sources, attending to such features as the date and origin of the information.                                                                             |
| LA.RH.9-10.2   | Determine the theme, central ideas, key information and/or perspective(s) presented in a primary or secondary source; provide an accurate summary that makes clear the relationships among the key details and ideas.                                         |
| LA.RH.9-10.3   | Analyze in detail a series of events described in a text; draw connections between the events, to determine whether earlier events caused later ones or simply preceded them.                                                                                 |
| LA.RH.9-10.4   | Determine the meaning of words and phrases as they are used in a text, including vocabulary describing political, social, or economic aspects of history and the social sciences; analyze the cumulative impact of specific word choices on meaning and tone. |
| LA.RH.9-10.5   | Analyze how a text uses structure to emphasize key points or advance an explanation or analysis.                                                                                                                                                              |
| LA.RH.9-10.6   | Compare the point of view of two or more authors in regards to how they treat the same or similar topics, including which details they include and emphasize in their respective accounts.                                                                    |
| LA.RH.9-10.7   | Integrate quantitative or technical analysis (e.g., charts, research data) with qualitative analysis in print or digital text, to analyze information presented via different mediums.                                                                        |
| LA.RH.9-10.8   | Assess the extent to which the reasoning and evidence in a text support the author's claims.                                                                                                                                                                  |
| LA.RH.9-10.9   | Compare and contrast treatments of the same topic, or of various perspectives, in several primary and secondary sources; analyze how they relate in terms of themes and significant historical concepts.                                                      |
| LA.RH.9-10.10  | By the end of grade 10, read and comprehend history/social studies texts in the grades 9-10 text complexity band independently and proficiently.                                                                                                              |
| SOC.9-12.1.1.1 | Compare present and past events to evaluate the consequences of past decisions and to apply lessons learned.                                                                                                                                                  |
| SOC.9-12.1.1.2 | Analyze how change occurs through time due to shifting values and beliefs as well as technological advancements and changes in the political and economic landscape.                                                                                          |
| SOC.9-12.1.2.1 | Construct various forms of geographic representations to show the spatial patterns of physical and human phenomena.                                                                                                                                           |
| SOC.9-12.1.2.2 | Relate current events to the physical and human characteristics of places and regions.                                                                                                                                                                        |
| SOC.9-12.1.3.1 | Distinguish valid arguments from false arguments when interpreting current and historical events.                                                                                                                                                             |
| SOC.9-12.1.3.2 | Evaluate sources for validity and credibility and to detect propaganda, censorship, and bias.                                                                                                                                                                 |
| SOC.9-12.1.3.3 | Gather relevant information from multiple sources representing a wide range of views (including historians and experts) while using the date, context, and corroborative value of the sources to guide the selection.                                         |
| SOC.9-12.1.4.1 | Take a position on a current public policy issue and support it with historical evidence,                                                                                                                                                                     |

reasoning, and constitutional analysis in a written and/or oral format.

SOC.9-12.1.4.2

Demonstrate effective presentation skills by presenting information in a clear, concise, and well-organized manner taking into consider appropriate use of language for task and audience.

## Learning Objectives

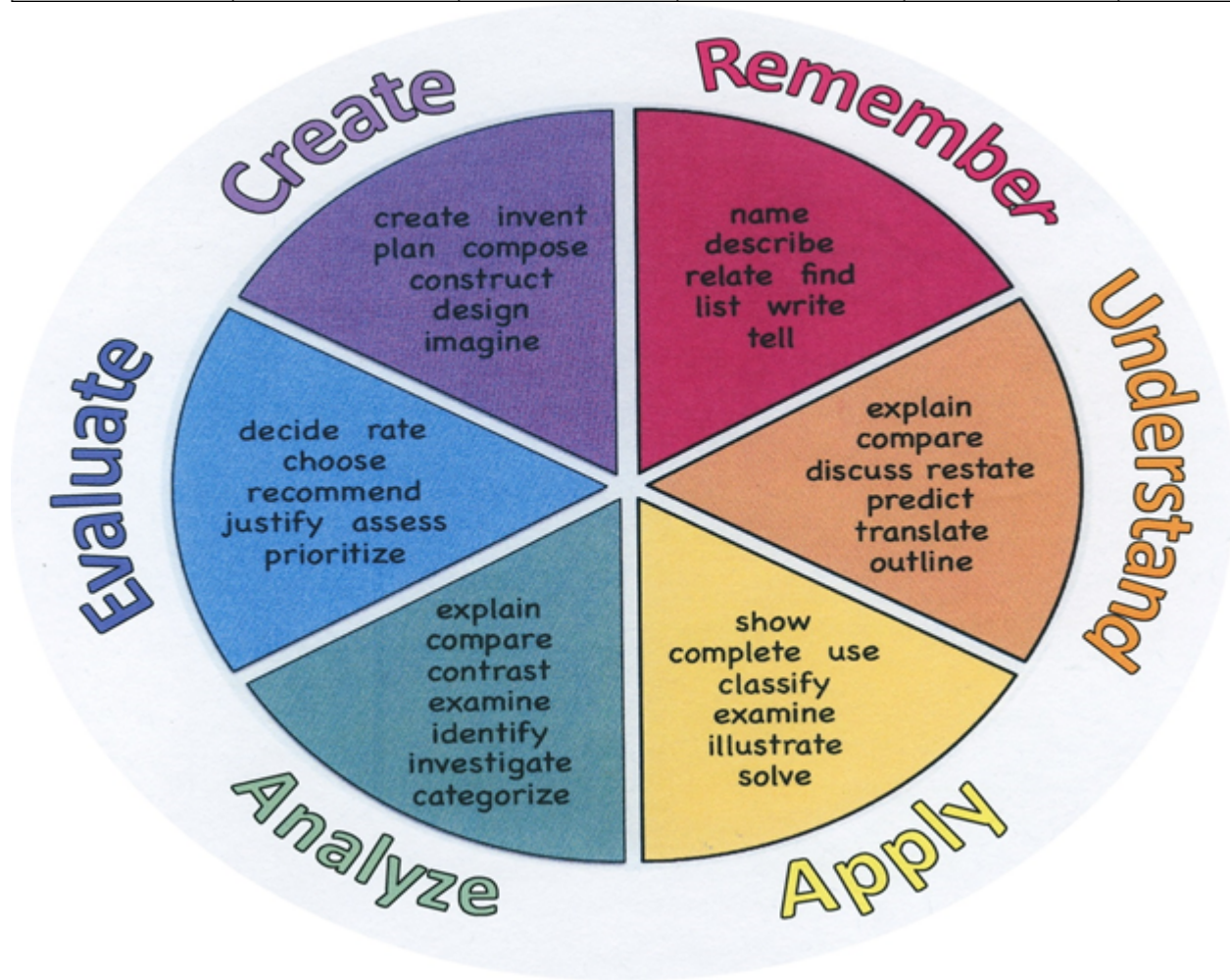
The students will be able to

- Analyze the nature v. nurture debate
- Describe the main factors that affect personality development
- Explain how social environment influences personality
- Explain the three theories for the development of self
- Analyze how environment affects the presentation of self
- Explain the primary agents of socialization in the United States
- Describe the two methods of resocialization
- Understand how the concept of the adolescent has developed
- Identify the five general characteristics of adolescence
- Analyze the development and influence of dating as a form of social interaction
- Explain how social factors such as drug use, suicide and sexual behavior affect teenage behavior
- Identify the differences between male and female adult development
- Identify the characteristics of late adulthood.

**Action Verbs:** Below are examples of action verbs associated with each level of the Revised Bloom's Taxonomy.

| Remember  | Understand    | Apply       | Analyze       | Evaluate  | Create      |
|-----------|---------------|-------------|---------------|-----------|-------------|
| Choose    | Classify      | Choose      | Categorize    | Appraise  | Combine     |
| Describe  | Defend        | Dramatize   | Classify      | Judge     | Compose     |
| Define    | Demonstrate   | Explain     | Compare       | Criticize | Construct   |
| Label     | Distinguish   | Generalize  | Differentiate | Defend    | Design      |
| List      | Explain       | Judge       | Distinguish   | Compare   | Develop     |
| Locate    | Express       | Organize    | Identify      | Assess    | Formulate   |
| Match     | Extend        | Paint       | Infer         | Conclude  | Hypothesize |
| Memorize  | Give Examples | Prepare     | Point out     | Contrast  | Invent      |
| Name      | Illustrate    | Produce     | Select        | Critique  | Make        |
| Omit      | Indicate      | Select      | Subdivide     | Determine | Originate   |
| Recite    | Interrelate   | Show        | Survey        | Grade     | Organize    |
| Select    | Interpret     | Sketch      | Arrange       | Justify   | Plan        |
| State     | Infer         | Solve       | Breakdown     | Measure   | Produce     |
| Count     | Match         | Use         | Combine       | Rank      | Role Play   |
| Draw      | Paraphrase    | Add         | Detect        | Rate      | Drive       |
| Outline   | Represent     | Calculate   | Diagram       | Support   | Devise      |
| Point     | Restate       | Change      | Discriminate  | Test      | Generate    |
| Quote     | Rewrite       | Classify    | Illustrate    |           | Integrate   |
| Recall    | Select        | Complete    | Outline       |           | Prescribe   |
| Recognize | Show          | Compute     | Point out     |           | Propose     |
| Repeat    | Summarize     | Discover    | Separate      |           | Reconstruct |
| Reproduce | Tell          | Divide      |               |           | Revise      |
|           | Translate     | Examine     |               |           | Rewrite     |
|           | Associate     | Graph       |               |           | Transform   |
|           | Compute       | Interpolate |               |           |             |
|           | Convert       | Manipulate  |               |           |             |
|           | Discuss       | Modify      |               |           |             |
|           | Estimate      | Operate     |               |           |             |
|           | Extrapolate   | Subtract    |               |           |             |
|           | Generalize    |             |               |           |             |

|  |         |  |  |  |  |
|--|---------|--|--|--|--|
|  | Predict |  |  |  |  |
|--|---------|--|--|--|--|



### **Suggested Activities & Best Practices**

- Establish sociological context by checking for understanding about the process of socialization.
- Build foundation through vocabulary and key people identification such as master status
- Use of primary sources from multiple perspectives including view point, culture and class
- Use of Ebook to interactively use the text book through videos, pictures, audio etc
- Research and collect conceptual evidence for an alternative assessment; essay; PPT

## **Assessment Evidence - Checking for Understanding (CFU)**

---

Use of Exit Tickets to conclude the lesson on how socialization affects all of society.-summative assessment

Student Presentations on how aspects such as primary groups or master status changes the way we act as a society and use Evaluation Rubrics-benchmark assessment

Think, pair, share-formative assessment

Written reports-alternate assessment

- Admit Tickets
- Anticipation Guide
- Common Benchmarks
- Compare & Contrast
- Create a Multimedia Poster
- DBQ's
- Define
- Describe
- Evaluate
- Evaluation rubrics
- Exit Tickets
- Explaining
- Fist- to-Five or Thumb-Ometer
- Illustration
- Journals
- KWL Chart
- Learning Center Activities
- Multimedia Reports
- Newspaper Headline
- Outline
- Question Stems
- Quickwrite
- Quizzes
- Red Light, Green Light
- Self- assessments



- Socratic Seminar
- Study Guide
- Surveys
- Teacher Observation Checklist
- Think, Pair, Share
- Think, Write, Pair, Share
- Top 10 List
- Unit review/Test prep
- Unit tests
- Web-Based Assessments
- Written Reports

## **Primary Resources & Materials**

---

Sociology - HMH Social Studies Textbook

Copyright 2018

## **Ancillary Resources**

---

- NEWSELA
- COMMONLIT
- Close Read Screencasts
- Connect One
- Interactive Timelines
- In the Trenches: Teaching and Learning Sociology [Maxine P. Atkinson](#), [Kathleen S. Lowney](#), W. W. Norton, Incorporated, 2016 - [Sociology](#) - 368 pages

## **Technology Infusion**

---

- Create a PPT describing how specific socialization aspects affect people at different times.
- Make an interactive website about how the master status affects the world we live in today.
- Use of Google Chrome Books
- Google Classroom to communicate information to the students
- Various Online tools
- Online Databases from BHS Media Center

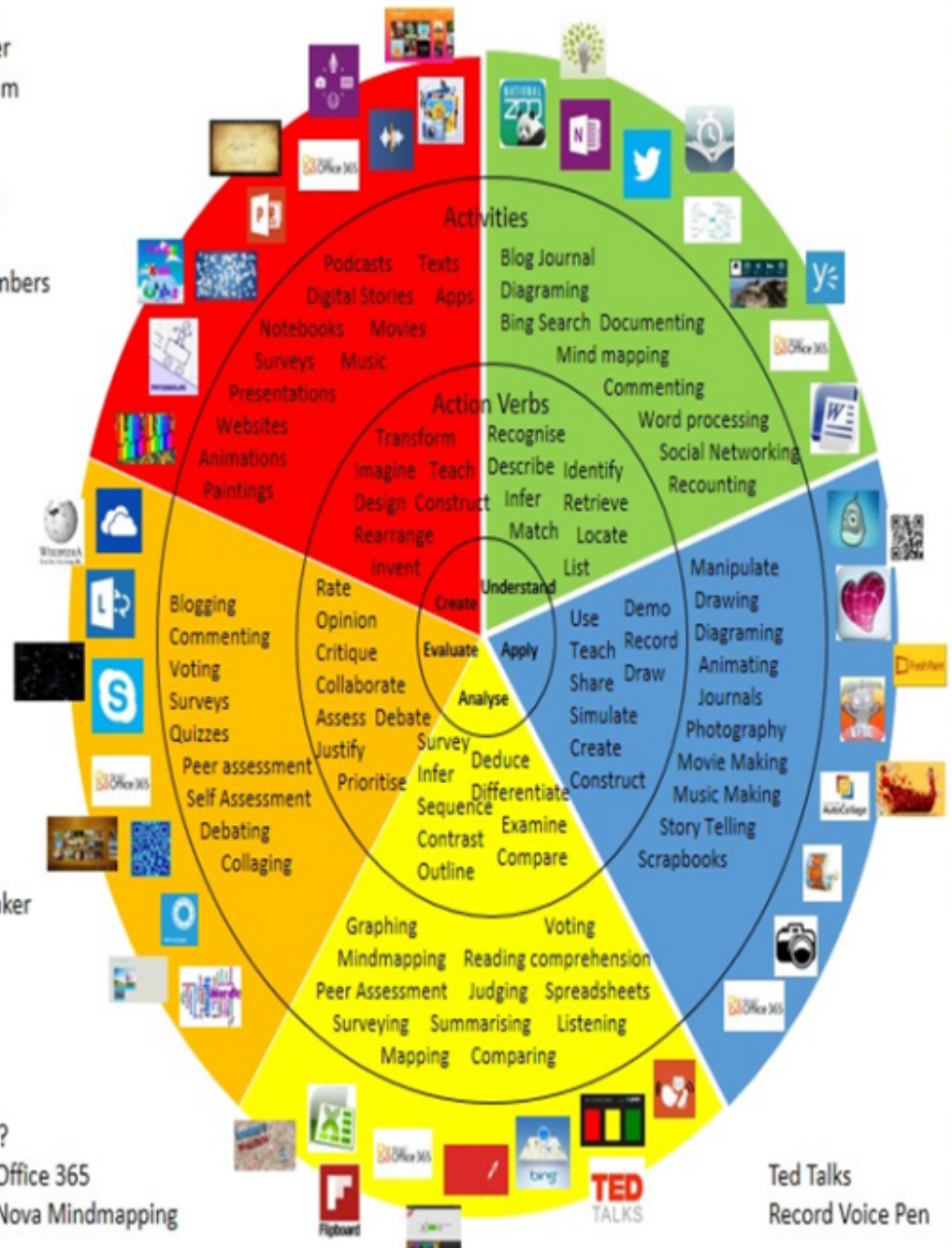
- Use of Flipgrid when utilizing student presentations

## Win 8.1 Apps/Tools Pedagogy Wheel

Podcasts  
Photostory 3  
Kid Story Builder  
Music Maker Jam  
Paint A Story  
Office 365  
MS PowerPoint  
Stack 'Em Up  
NqSquared Numbers  
Physamajig  
Xylophone 8

Wikipedia  
Skydrive  
Lync  
SkyMap  
Skype  
Office 365  
Puzzle Touch  
Easy QR  
Memorylage  
Life Moments  
Word Cloud Maker

Where's Waldo?  
MS Excel  
Flipboard  
Office 365  
Nova Mindmapping



## **Alignment to 21st Century Skills & Technology**

---

Mastery and infusion of **21st Century Skills & Technology** and their Alignment to the core content areas is essential to student learning. The core content areas include:

- English Language Arts;
- Mathematics;
- Science and Scientific Inquiry (Next Generation);
- Social Studies, including American History, World History, Geography, Government and Civics, and Economics;
- World languages;
- Technology;
- Visual and Performing Arts.

|               |                                                                                                                                                                                                                                          |
|---------------|------------------------------------------------------------------------------------------------------------------------------------------------------------------------------------------------------------------------------------------|
| TECH.8.1.12.A | Technology Operations and Concepts: Students demonstrate a sound understanding of technology concepts, systems and operations.                                                                                                           |
| TECH.8.1.12.B | Creativity and Innovation: Students demonstrate creative thinking, construct knowledge and develop innovative products and process using technology.                                                                                     |
| TECH.8.1.12.C | Communication and Collaboration: Students use digital media and environments to communicate and work collaboratively, including at a distance, to support individual learning and contribute to the learning of others.                  |
| TECH.8.1.12.D | Digital Citizenship: Students understand human, cultural, and societal issues related to technology and practice legal and ethical behavior.                                                                                             |
| TECH.8.1.12.E | Research and Information Fluency: Students apply digital tools to gather, evaluate, and use information.                                                                                                                                 |
| TECH.8.1.12.F | Critical thinking, problem solving, and decision making: Students use critical thinking skills to plan and conduct research, manage projects, solve problems, and make informed decisions using appropriate digital tools and resources. |

## **21st Century Skills/Interdisciplinary Themes**

---

- Communication and Collaboration
- Creativity and Innovation
- Critical thinking and Problem Solving
- ICT (Information, Communications and Technology) Literacy
- Information Literacy
- Life and Career Skills

- Media Literacy

## 21st Century Skills

---

- Civic Literacy
- Environmental Literacy
- Financial, Economic, Business and Entrepreneurial Literacy
- Global Awareness
- Health Literacy

## Differentiation

---

### Differentiations:

- Small group instruction
- Small group assignments
- Extra time to complete assignments
- Pairing oral instruction with visuals
- Repeat directions
- Use manipulatives
- Center-based instruction
- Token economy
- Study guides
- Teacher reads assessments allowed
- Scheduled breaks
- Rephrase written directions
- Multisensory approaches
- Additional time
- Preview vocabulary
- Preview content & concepts
- Story guides
- Behavior management plan
- Highlight text
- Student(s) work with assigned partner
- Visual presentation
- Assistive technology
- Auditory presentations
- Large print edition
- Dictation to scribe

- Small group setting

#### **Hi-Prep Differentiations:**

- Alternative formative and summative assessments
- Choice boards
- Games and tournaments
- Group investigations
- Guided Reading
- Independent research and projects
- Interest groups
- Learning contracts
- Leveled rubrics
- Literature circles
- Multiple intelligence options
- Multiple texts
- Personal agendas
- Project-based learning
- Problem-based learning
- Stations/centers
- Think-Tac-Toes
- Tiered activities/assignments
- Tiered products
- Varying organizers for instructions

#### **Lo-Prep Differentiations**

- Choice of books or activities
- Cubing activities
- Exploration by interest
- Flexible grouping
- Goal setting with students
- Jigsaw
- Mini workshops to re-teach or extend skills
- Open-ended activities
- Think-Pair-Share
- Reading buddies
- Varied journal prompts
- Varied supplemental materials

## **Special Education Learning (IEP's & 504's)**

---

Extended time for Journals from the perspective of a character from My Girl and how they were affected by anticipatory socialization.

Check students progress as they take notes on socialization.

- printed copy of board work/notes provided
- additional time for skill mastery
- assistive technology
- behavior management plan
- Center-Based Instruction
- check work frequently for understanding
- computer or electronic device utilizes
- extended time on tests/ quizzes
- have student repeat directions to check for understanding
- highlighted text visual presentation
- modified assignment format
- modified test content
- modified test format
- modified test length
- multiple test sessions
- multi-sensory presentation
- preferential seating
- preview of content, concepts, and vocabulary
- Provide modifications as dictated in the student's IEP/504 plan
- reduced/shortened reading assignments
- Reduced/shortened written assignments
- secure attention before giving instruction/directions
- shortened assignments
- student working with an assigned partner
- teacher initiated weekly assignment sheet
- Use open book, study guides, test prototypes

## **English Language Learning (ELL)**

---

allowing students to work with other English speaking students on specific assignments

true/false assessments about various socialization aspects of society.

- teaching key aspects of a topic. Eliminate nonessential information
- using videos, illustrations, pictures, and drawings to explain or clarify
- allowing products (projects, timelines, demonstrations, models, drawings, dioramas, poster boards, charts, graphs, slide shows, videos, etc.) to demonstrate student's learning;
- allowing students to correct errors (looking for understanding)
- allowing the use of note cards or open-book during testing
- decreasing the amount of work presented or required
- having peers take notes or providing a copy of the teacher's notes
- modifying tests to reflect selected objectives
- providing study guides
- reducing or omitting lengthy outside reading assignments
- reducing the number of answer choices on a multiple choice test
- tutoring by peers
- using computer word processing spell check and grammar check features
- using true/false, matching, or fill in the blank tests in lieu of essay tests

## **At Risk**

---

provide a unit syllabus to help students stay focused

use real life examples when teaching about the struggles of the clash of social structure.

- allowing students to correct errors (looking for understanding)
- teaching key aspects of a topic. Eliminate nonessential information
- allowing products (projects, timelines, demonstrations, models, drawings, dioramas, poster boards, charts, graphs, slide shows, videos, etc.) to demonstrate student's learning
- allowing students to select from given choices
- allowing the use of note cards or open-book during testing
- collaborating (general education teacher and specialist) to modify vocabulary, omit or modify items to reflect objectives for the student, eliminate sections of the test, and determine how the grade will be determined prior to giving the test.
- decreasing the amount of work presented or required
- having peers take notes or providing a copy of the teacher's notes
- marking students' correct and acceptable work, not the mistakes
- modifying tests to reflect selected objectives
- providing study guides
- reducing or omitting lengthy outside reading assignments
- reducing the number of answer choices on a multiple choice test
- tutoring by peers
- using authentic assessments with real-life problem-solving
- using true/false, matching, or fill in the blank tests in lieu of essay tests
- using videos, illustrations, pictures, and drawings to explain or clarify

## Talented and Gifted Learning (T&G)

---

debate about how culture affects people in different social standings - use Movies such as My Girl  
investigate the ways society reacts to various social structures.

- Above grade level placement option for qualified students
- Advanced problem-solving
- Allow students to work at a faster pace
- Cluster grouping
- Complete activities aligned with above grade level text using Benchmark results
- Create a blog or social media page about their unit
- Create a plan to solve an issue presented in the class or in a text
- Debate issues with research to support arguments
- Flexible skill grouping within a class or across grade level for rigor
- Higher order, critical & creative thinking skills, and discovery
- Multi-disciplinary unit and/or project
- Teacher-selected instructional strategies that are focused to provide challenge, engagement, and growth opportunities
- Utilize exploratory connections to higher-grade concepts
- Utilize project-based learning for greater depth of knowledge

## Sample Lesson

---

Using the template below, please develop a **Sample Lesson** for the first unit only.

Unit Name:

NJSLS:

Interdisciplinary Connection:

Statement of Objective:

Anticipatory Set/Do Now:

Learning Activity:



Student Assessment/CFU's:

Materials:

21st Century Themes and Skills:

Differentiation/Modifications:

Integration of Technology:

Movie: Breakfast Club (97 minutes) - [Movie](#)

- Guided questions - WILL NOT be graded. Use them to help break down the movie for your assessment after. [Breakfast Club Questions](#)

Socialization Collage - [Collage](#) (Due: 12/23 - R) - make sure you hand this in before break. You will have time in class to complete it. The movie will only take about 3 days.