

# Unit 3: To Be Or Not To Be

Content Area: **World Language**  
Course(s): **World Language Gr. 6**  
Time Period: **JanFeb**  
Length: **34 days Grade 6**  
Status: **Published**

## **Unit 3: To Be Or Not To Be**

---

## **Department of Curriculum and Instruction**



**Belleville Public Schools**

**Curriculum Guide**

World Language

Unit 3: To Be Or Not To

Be

**Belleville Board of Education**

**102 Passaic Avenue**

**Belleville, NJ 07109**

**Prepared by:** Ms. Catherine Maucione and Ms. Lourdes Chavez

Dr. Richard Tomko, Ph.D., M.J., Superintendent of Schools

Ms. LucyAnn Demikoff, Director of Curriculum and Instruction K-12

Ms. Nicole Shanklin, Director of Elementary Education

Mr. George Droste, Director of Secondary Education

Board Approved: September 23, 2019

## **Unit Overview**

---

Unit 3 further strengthens students' communication skills in the target language by exposing and practicing the various ways of using the verb "to be". The target language has 2 separate verbs and conjugations for the same verb. Their rules are quite numerous and difficult at times even for a native speaker. Knowledge of these verbs allows learners to talk about themselves and others using the correct verb form.

## **Enduring Understanding**

---

There is a special conjugation for the verb "to be", unlike the regular verbs.

There are two different verbs which represent "to be".

It is important to recognize which verb to use when speaking or writing.

One verb is for permanent things, the other for things that change.

## **Essential Questions**

---

How do I say what I am and where I am?

How do I ask where someplace is located?

How do I introduce family members or friends?

How do I describe something; a picture, a person, etc.

## Exit Skills

---

Students will be able to:

Introduce themselves, stating they are students and other information.

Introduce others, stating their relationship to them.

Ask where someone or something is located.

Ask how something looks.

## New Jersey Student Learning Standards (NJSL)

---

WL.7.1.NM.A.C.1	Personal identity is developed through experiences that occur within one's family, one's community, and the culture at large. (Topics that assist in the development of this understanding should include, but are not limited to: self, friends, family, pets, physical/personality descriptions, school, likes/dislikes, and pastimes.)
WL.7.1.NM.A.C.5	What is perceived as "basic needs" varies among and within cultures. (Topics that assist in the development of this understanding should include, but are not limited to: safety, food, shelter, and purchase and sale of goods such as toys, games, travel, and luxury items.)
WL.7.1.NM.A.L.1	The Novice - Mid language learner understands and communicates at the word level and can independently identify and recognize memorized words and phrases that bring meaning to text.

## Interdisciplinary Connections

---

	Key Ideas and Details
LA.RL.6.1	Cite textual evidence and make relevant connections to support analysis of what the text says explicitly as well as inferences drawn from the text.
LA.RL.6.4	Determine the meaning of words and phrases as they are used in a text, including figurative and connotative meanings; analyze the impact of a specific word choice on meaning and tone.

## Learning Objectives

---

Students will be able to:

Introduce themselves, stating that they are students and other information.

Introduce others, stating their relationship and description.

Ask where someone or something is located.

Ask what someone or something looks like.

**Action Verbs:** Below are examples of action verbs associated with each level of the Revised Bloom's Taxonomy.

<b>Remember</b>	<b>Understand</b>	<b>Apply</b>	<b>Analyze</b>	<b>Evaluate</b>	<b>Create</b>
Choose	Classify	Choose	Categorize	Appraise	Combine
Describe	Defend	Dramatize	Classify	Judge	Compose
Define	Demonstrate	Explain	Compare	Criticize	Construct
Label	Distinguish	Generalize	Differentiate	Defend	Design
List	Explain	Judge	Distinguish	Compare	Develop
Locate	Express	Organize	Identify	Assess	Formulate
Match	Extend	Paint	Infer	Conclude	Hypothesize
Memorize	Give Examples	Prepare	Point out	Contrast	Invent
Name	Illustrate	Produce	Select	Critique	Make
Omit	Indicate	Select	Subdivide	Determine	Originate
Recite	Interrelate	Show	Survey	Grade	Organize
Select	Interpret	Sketch	Arrange	Justify	Plan
State	Infer	Solve	Breakdown	Measure	Produce
Count	Match	Use	Combine	Rank	Role Play
Draw	Paraphrase	Add	Detect	Rate	Drive
Outline	Represent	Calculate	Diagram	Support	Devise
Point	Restate	Change	Discriminate	Test	Generate
Quote	Rewrite	Classify	Illustrate		Integrate
Recall	Select	Complete	Outline		Prescribe
Recognize	Show	Compute	Point out		Propose
Repeat	Summarize	Discover	Separate		Reconstruct
Reproduce	Tell	Divide			Revise
	Translate	Examine			Rewrite
	Associate	Graph			Transform
	Compute	Interpolate			
	Convert	Manipulate			
	Discuss	Modify			
	Estimate	Operate			
	Extrapolate	Subtract			
	Generalize				
	Predict				



### **Suggested Activities & Best Practices**

Utilize the varied forms of "to be" in the target language to ensure familiarity.

State the weather daily including the verb "to be".

## **Assessment Evidence - Checking for Understanding (CFU)**

---

Students insert the correct form of the indicated verb in a quiz.

When verb form is announced, students identify the pronoun that goes along.

- Admit Tickets
- Anticipation Guide
- Common Benchmarks
- Compare & Contrast
- Create a Multimedia Poster
- DBQ's
- Define
- Describe
- Evaluate
- Evaluation rubrics
- Exit Tickets
- Explaining
- Fist- to-Five or Thumb-Ometer
- Illustration
- Journals
- KWL Chart
- Learning Center Activities
- Multimedia Reports
- Newspaper Headline
- Outline
- Question Stems
- Quickwrite
- Quizzes
- Red Light, Green Light
- Self- assessments
- Socratic Seminar
- Study Guide
- Surveys
- Teacher Observation Checklist
- Think, Pair, Share
- Think, Write, Pair, Share
- Top 10 List

- Unit review/Test prep
- Unit tests
- Web-Based Assessments
- Written Reports

### **Primary Resources & Materials**

---

Spanish is Fun workbook, Teach Them Spanish workbook, Teacher made worksheets

### **Ancillary Resources**

---

SmartBoard, YouTube

### **Technology Infusion**

---

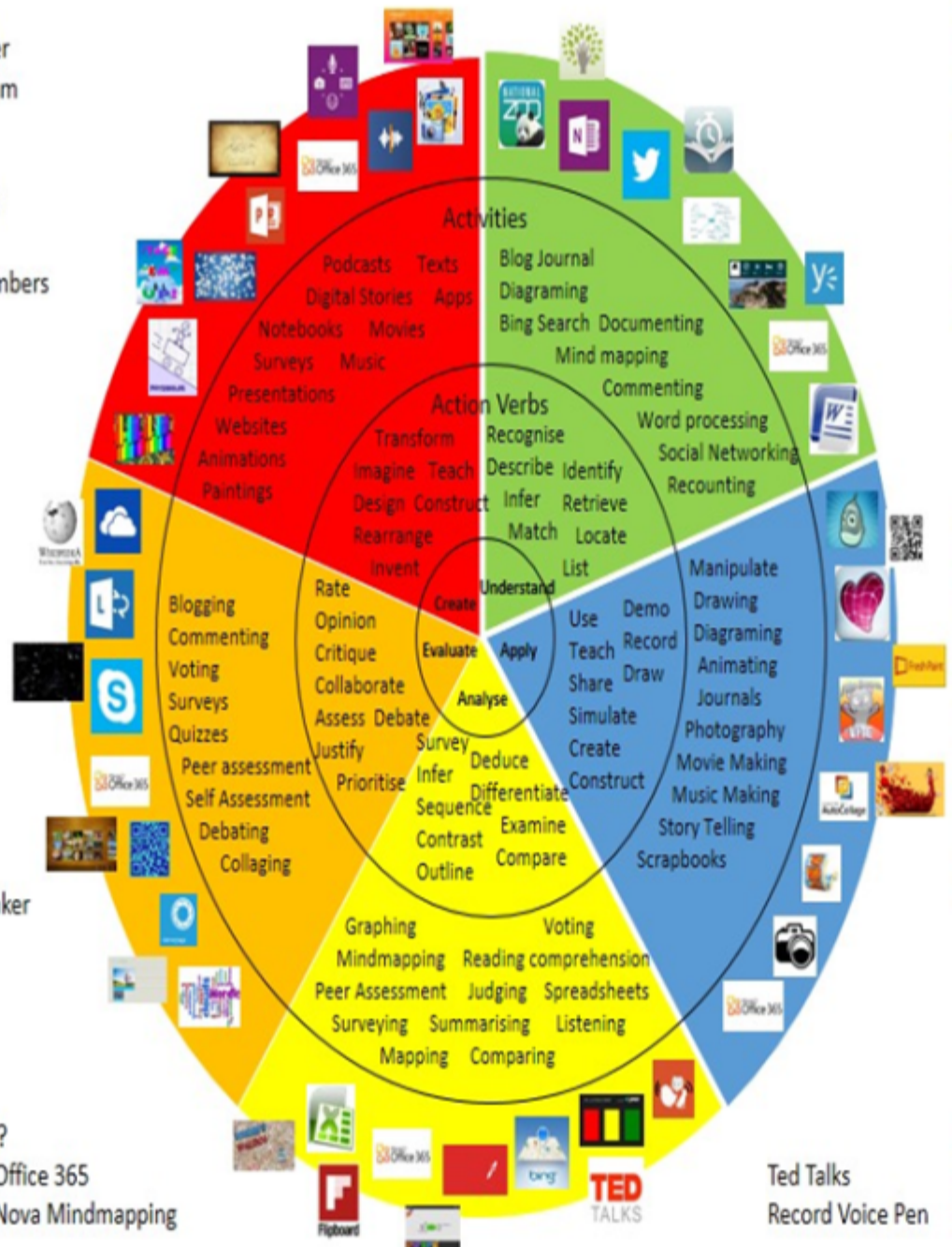
YouTube video demonstrating the forms of the verb "to be" utilizing familiar music to young teens.

Chromebook can be used for illustrations along with a sentence description of oneself using the verb "to be".

Originally taken from <http://www.coetail.com/vzimmer/files/2013/02/IPadagogy-Wheel.001.jpg>  
And adapted for Windows 8.1 devices by Charlotte Beckhurst @CharBeckhurst

Wikipedia  
Skydrive  
Lync  
SkyMap  
Skype  
Office 365  
Puzzle Touch  
Easy QR  
Memorylage  
Life Moments  
Word Cloud Maker

Ted Talks  
Record Voice Pen





## **Alignment to 21st Century Skills & Technology**

---

Mastery and infusion of **21st Century Skills & Technology** and their Alignment to the core content areas is essential to student learning. The core content areas include:

- English Language Arts;
- Mathematics;
- Science and Scientific Inquiry (Next Generation);
- Social Studies, including American History, World History, Geography, Government and Civics, and Economics;
- World languages;
- Technology;
- Visual and Performing Arts.

CRP.K-12.CRP2	Apply appropriate academic and technical skills.
CRP.K-12.CRP2.1	Career-ready individuals readily access and use the knowledge and skills acquired through experience and education to be more productive. They make connections between abstract concepts with real-world applications, and they make correct insights about when it is appropriate to apply the use of an academic skill in a workplace situation.
CAEP.9.2.8.B.3	Evaluate communication, collaboration, and leadership skills that can be developed through school, home, work, and extracurricular activities for use in a career.
TECH.8.1.8	Educational Technology: All students will use digital tools to access, manage, evaluate, and synthesize information in order to solve problems individually and collaborate and to create and communicate knowledge.
TECH.8.1.8.A.CS1	Understand and use technology systems.
TECH.8.1.8.A.CS2	Select and use applications effectively and productively.

## **21st Century Skills/Interdisciplinary Themes**

---

- Communication and Collaboration
- Creativity and Innovation
- Critical thinking and Problem Solving
- ICT (Information, Communications and Technology) Literacy
- Information Literacy
- Life and Career Skills
- Media Literacy

## **21st Century Skills**

---

- Civic Literacy
- Environmental Literacy
- Financial, Economic, Business and Entrepreneurial Literacy
- Global Awareness
- Health Literacy

## **Differentiation**

---

Provide a word bank of forms of verb to facilitate completion of written verb practice.

Chorals of verb forms increase familiarity and order practice of verb forms.

## **Differentiation**

- Small group instruction
- Small group assignments
- Extra time to complete assignments
- Pairing oral instruction with visuals
- Repeat directions
- Use manipulatives
- Center-based instruction
- Token economy
- Study guides
- Teacher reads assessments allowed
- Scheduled breaks
- Rephrase written directions
- Multisensory approaches
- Additional time
- Preview vocabulary
- Preview content & concepts
- Story guides
- Behavior management plan
- Highlight text
- Student(s) work with assigned partner
- Visual presentation
- Assistive technology
- Auditory presentations
- Large print edition
- Dictation to scribe
- Small group setting

### **Hi-Prep Differentiations:**

- Alternative formative and summative assessments

- Choice boards
- Games and tournaments
- Group investigations
- Guided Reading
- Independent research and projects
- Interest groups
- Learning contracts
- Leveled rubrics
- Literature circles
- Multiple intelligence options
- Multiple texts
- Personal agendas
- Project-based learning
- Problem-based learning
- Stations/centers
- Think-Tac-Toes
- Tiered activities/assignments
- Tiered products
- Varying organizers for instructions

#### **Lo-Prep Differentiations**

- Choice of books or activities
- Cubing activities
- Exploration by interest
- Flexible grouping
- Goal setting with students
- Jigsaw
- Mini workshops to re-teach or extend skills
- Open-ended activities
- Think-Pair-Share
- Reading buddies
- Varied journal prompts
- Varied supplemental materials

### **Special Education Learning (IEP's & 504's)**

---

Notes are provided at the bottom of verb practice worksheet.

The changing endings are highlighted on the verb practice worksheet.

- printed copy of board work/notes provided
- additional time for skill mastery

- assistive technology
- behavior management plan
- Center-Based Instruction
- check work frequently for understanding
- computer or electronic device utilizes
- extended time on tests/ quizzes
- have student repeat directions to check for understanding
- highlighted text visual presentation
- modified assignment format
- modified test content
- modified test format
- modified test length
- multi-sensory presentation
- multiple test sessions
- preferential seating
- preview of content, concepts, and vocabulary
- Provide modifications as dictated in the student's IEP/504 plan
- reduced/shortened reading assignments
- Reduced/shortened written assignments
- secure attention before giving instruction/directions
- shortened assignments
- student working with an assigned partner
- teacher initiated weekly assignment sheet
- Use open book, study guides, test prototypes

## **English Language Learning (ELL)**

---

Native speakers can demonstrate the difference between the 2 verbs that represent "to be".

Notes on verb formation can be copied by peers for those who are limited in English and unfamiliar with the target language.

- teaching key aspects of a topic. Eliminate nonessential information
- using videos, illustrations, pictures, and drawings to explain or clarify
- allowing products (projects, timelines, demonstrations, models, drawings, dioramas, poster boards, charts, graphs, slide shows, videos, etc.) to demonstrate student's learning;
- allowing students to correct errors (looking for understanding)
- allowing the use of note cards or open-book during testing
- decreasing the amount of work presented or required

- having peers take notes or providing a copy of the teacher's notes
- modifying tests to reflect selected objectives
- providing study guides
- reducing or omitting lengthy outside reading assignments
- reducing the number of answer choices on a multiple choice test
- tutoring by peers
- using computer word processing spell check and grammar check features
- using true/false, matching, or fill in the blank tests in lieu of essay tests

## **At Risk**

---

Use true/false questions to facilitate recognition of correct sentence structure on verb practice worksheet.

Modify verb test by having less multiple choice selections for answers.

- allowing students to correct errors (looking for understanding)
- teaching key aspects of a topic. Eliminate nonessential information
- allowing products (projects, timelines, demonstrations, models, drawings, dioramas, poster boards, charts, graphs, slide shows, videos, etc.) to demonstrate student's learning
- allowing students to select from given choices
- allowing the use of note cards or open-book during testing
- collaborating (general education teacher and specialist) to modify vocabulary, omit or modify items to reflect objectives for the student, eliminate sections of the test, and determine how the grade will be determined prior to giving the test.
- decreasing the amount of work presented or required
- having peers take notes or providing a copy of the teacher's notes
- marking students' correct and acceptable work, not the mistakes
- modifying tests to reflect selected objectives
- providing study guides
- reducing or omitting lengthy outside reading assignments
- reducing the number of answer choices on a multiple choice test
- tutoring by peers
- using authentic assessments with real-life problem-solving
- using true/false, matching, or fill in the blank tests in lieu of essay tests
- using videos, illustrations, pictures, and drawings to explain or clarify

## **Talented and Gifted Learning (T&G)**

---

Students research the verb "to be" in other languages besides the target language.

Students create a crossword puzzle with the forms of the verb "to be" with English translations for classmates to solve.

- Above grade level placement option for qualified students
- Advanced problem-solving
- Allow students to work at a faster pace
- Cluster grouping
- Complete activities aligned with above grade level text using Benchmark results
- Create a blog or social media page about their unit
- Create a plan to solve an issue presented in the class or in a text
- Debate issues with research to support arguments
- Flexible skill grouping within a class or across grade level for rigor
- Higher order, critical & creative thinking skills, and discovery
- Multi-disciplinary unit and/or project
- Teacher-selected instructional strategies that are focused to provide challenge, engagement, and growth opportunities
- Utilize exploratory connections to higher-grade concepts
- Utilize project-based learning for greater depth of knowledge

## Sample Lesson

---

Using the template below, please develop a **Sample Lesson** for the first unit only.

Unit Name:

NJSLS:

Interdisciplinary Connection:

Statement of Objective:

Anticipatory Set/Do Now:

Learning Activity:

Student Assessment/CFU's:

Materials:

21st Century Themes and Skills:

Differentiation/Modifications:

Integration of Technology:

