

Unit 1: Poetry

Content Area: **ELA**
Course(s): **Creative Writing**
Time Period: **September**
Length: **20 Days; Grades 11 and 12**
Status: **Published**

Title Section

Department of Curriculum and Instruction



Belleville Public Schools

Curriculum Guide

CREATIVE WRITING

UNIT 1 POETRY

GRADES 11 and 12

Belleville Board of Education

102 Passaic Avenue

Belleville, NJ 07109

Prepared by: Michele McDonough

Teacher of English

Dr. Richard Tomko, Ph.D., M.J., Superintendent of Schools

Ms. LucyAnn Demikoff, Director of Curriculum and Instruction K-12

Ms. Nicole Shanklin, Director of Elementary Education K-8, ESL Coordinator K-12

Mr. George Droste, Director of Secondary Education

Board Approved: September 23, 2019

Unit Overview

In Unit 1, students gain a better understanding of, and appreciation for, poetry by exploring many different themes, concepts, and ideas across a variety of poems. Students will recognize rhythm scheme and form as they read poetry and apply that knowledge as they create original works. Young poets will also analyze the emotion and message behind various poems. Students will choose a poem to memorize that poem for a presentation to the class. This may be done in pairs to help decrease anxiety levels. At the end of this unit, writers will have the opportunity to demonstrate their ability to create original works of poetry and present it to the class in one of a variety of presentation styles. A booklet of at least 5 poems including: a cover page; an About the Author page, a Table of Contents; the pages of poems with illustrations ; and a final reflection page about poetry will be polished and added to the portfolio.

Enduring Understanding

Poetry is meant to be read out loud with emotion and the appropriate tone.

There is a broad spectrum of poetry forms that have been used throughout the years

Writing and sharing poetry is an inherently personal experience

Poetry has the power to change the world

Literary techniques are significant to expressing a subject meaningfully

Active listeners discern the ideas of others to understand multiple perspectives and build knowledge

Essential Questions

- How does poetry differ from other forms of literature?
- How can one poem change the world?
- In what ways has poetry played a role in various social and cultural movements?
- How can a poem change my life?
- What are poetic devices?
- What is structure?
- What are the essential elements of poetry?

- How does studying poetry enhance our ability to write poetry?
- What makes a piece of writing "poetry" and particular writers "masters" of their craft?

Exit Skills

How to interpret poems through a variety of ways.

How to use choice of words in a poem that creates voice and tone

To compose the sound of a poem (rhyme, rhythm, alliteration, repetition, assonance, parallelism, & onomatopoeia) that supports the subject and mood

Create imagery and figures of speech that appeal to the reader's senses and experience

To write structured poems

To write free verse poems

New Jersey Student Learning Standards (NJSL-S)

LA.RL.11-12.1	Cite strong and thorough textual evidence and make relevant connections to support analysis of what the text says explicitly as well as inferences drawn from the text, including determining where the text leaves matters uncertain.
LA.RL.11-12.2	Determine two or more themes or central ideas of a text and analyze their development over the course of the text, including how they interact and build on one another to produce a complex account; provide an objective summary of the text.
LA.RL.11-12.3	Analyze the impact of the author's choices regarding how to develop and relate elements of a story or drama (e.g., where a story is set, how the action is ordered, how the characters are introduced and developed).
LA.RL.11-12.4	Determine the meaning of words and phrases as they are used in the text, including figurative and connotative meanings; analyze the impact of specific word choices on meaning and tone, including words with multiple meanings or language that is particularly fresh, engaging, or beautiful. (e.g., Shakespeare as well as other authors.)
LA.RL.11-12.5	Analyze how an author's choices concerning how to structure specific parts of a text (e.g., the choice of where to begin or end a story, the choice to provide a comedic or tragic resolution) contribute to its overall structure and meaning as well as its aesthetic impact.
LA.RL.11-12.6	Analyze a case in which grasping a point of view requires distinguishing what is directly stated in a text from what is really meant (e.g., satire, sarcasm, irony, or understatement).
LA.RL.11-12.9	Demonstrate knowledge of and reflect on (e.g., practical knowledge, historical/cultural context, and background knowledge) eighteenth-, nineteenth- and early twentieth-century foundational works of literature, including how two or more texts from the same period treat similar themes or topics.
LA.RL.11-12.10a	By the end of grade 11, read and comprehend literature, including stories, dramas, and poems at grade level text-complexity or above with scaffolding as needed.
LA.RL.11-12.10b	By the end of grade 12, read and comprehend literature, including stories, dramas, and poems, at grade level or above.
LA.RI.11-12.3	Analyze a complex set of ideas or sequence of events and explain how specific individuals, ideas, or events interact and develop over the course of the text.
LA.RI.11-12.4	Determine the meaning of words and phrases as they are used in a text, including figurative, connotative, and technical meanings; analyze how an author uses and refines the meaning of a key term or terms over the course of a text (e.g., how Madison defines faction in Federalist No. 10).
LA.RI.11-12.5	Analyze and evaluate the effectiveness of the structure an author uses in his or her exposition or argument, including whether the structure makes points clear, convincing, and engaging.
LA.RI.11-12.10a	By the end of grade 11, read and comprehend literary nonfiction at grade level text-complexity or above with scaffolding as needed.

LA.RI.11-12.10b	By the end of grade 12, read and comprehend literary nonfiction at grade level text-complexity or above.
LA.SL.11-12.1	Initiate and participate effectively in a range of collaborative discussions (one-on-one, in groups, and teacher-led) with peers on grades 11–12 topics, texts, and issues, building on others’ ideas and expressing their own clearly and persuasively.
LA.SL.11-12.1.A	Come to discussions prepared, having read and researched material under study; explicitly draw on that preparation by referring to evidence from texts and other research on the topic or issue to stimulate a thoughtful, well reasoned exchange of ideas.
LA.SL.11-12.1.C	Propel conversations by posing and responding to questions that probe reasoning and evidence; ensure a hearing for a full range of positions on a topic or issue; clarify, verify, or challenge ideas and conclusions; and promote divergent and creative perspectives.
LA.SL.11-12.3	Evaluate a speaker’s point of view, reasoning, and use of evidence and rhetoric, assessing the stance, premises, links among ideas, word choice, points of emphasis, and tone used.
LA.SL.11-12.4	Present information, findings and supporting evidence clearly, concisely, and logically. The content, organization, development, and style are appropriate to task, purpose, and audience.
LA.SL.11-12.5	Make strategic use of digital media (e.g., textual, graphical, audio, visual, and interactive elements) in presentations to enhance understanding of findings, reasoning, and evidence and to add interest.
LA.SL.11-12.6	Adapt speech to a variety of contexts and tasks, demonstrating a command of formal English when indicated or appropriate.
LA.L.11-12.1	Demonstrate command of the conventions of standard English grammar and usage when writing or speaking.
LA.L.11-12.1.A	Apply the understanding that usage is a matter of convention, can change over time, and is sometimes contested.
LA.L.11-12.2	Demonstrate command of the conventions of standard English capitalization, punctuation, and spelling when writing.
LA.L.11-12.2.A	Observe hyphenation conventions.
LA.L.11-12.2.B	Spell correctly.
LA.L.11-12.3	Apply knowledge of language to understand how language functions in different contexts, to make effective choices for meaning or style, and to comprehend more fully when reading or listening.
LA.L.11-12.5	Demonstrate understanding of figurative language, word relationships, and nuances in word meanings.
LA.L.11-12.5.A	Interpret figures of speech (e.g., hyperbole, paradox) in context and analyze their role in the text.
LA.L.11-12.5.B	Analyze nuances in the meaning of words with similar denotations.

Interdisciplinary Connections

TECH.8.1.12.B.CS1

Apply existing knowledge to generate new ideas, products, or processes.

TECH.8.1.12.B.CS2	Create original works as a means of personal or group expression.
TECH.8.1.12.C.CS3	Develop cultural understanding and global awareness by engaging with learners of other cultures.
TECH.8.1.12.C.CS4	Contribute to project teams to produce original works or solve problems.
TECH.8.1.12.E	Research and Information Fluency: Students apply digital tools to gather, evaluate, and use information.

Learning Objectives

Interpret a poem through a variety of ways

Breakdown the rhyming scheme of a poem using a graphic organizer

Discuss and identify literary devices in poems

Apply literacy devices by creating original works of poetry

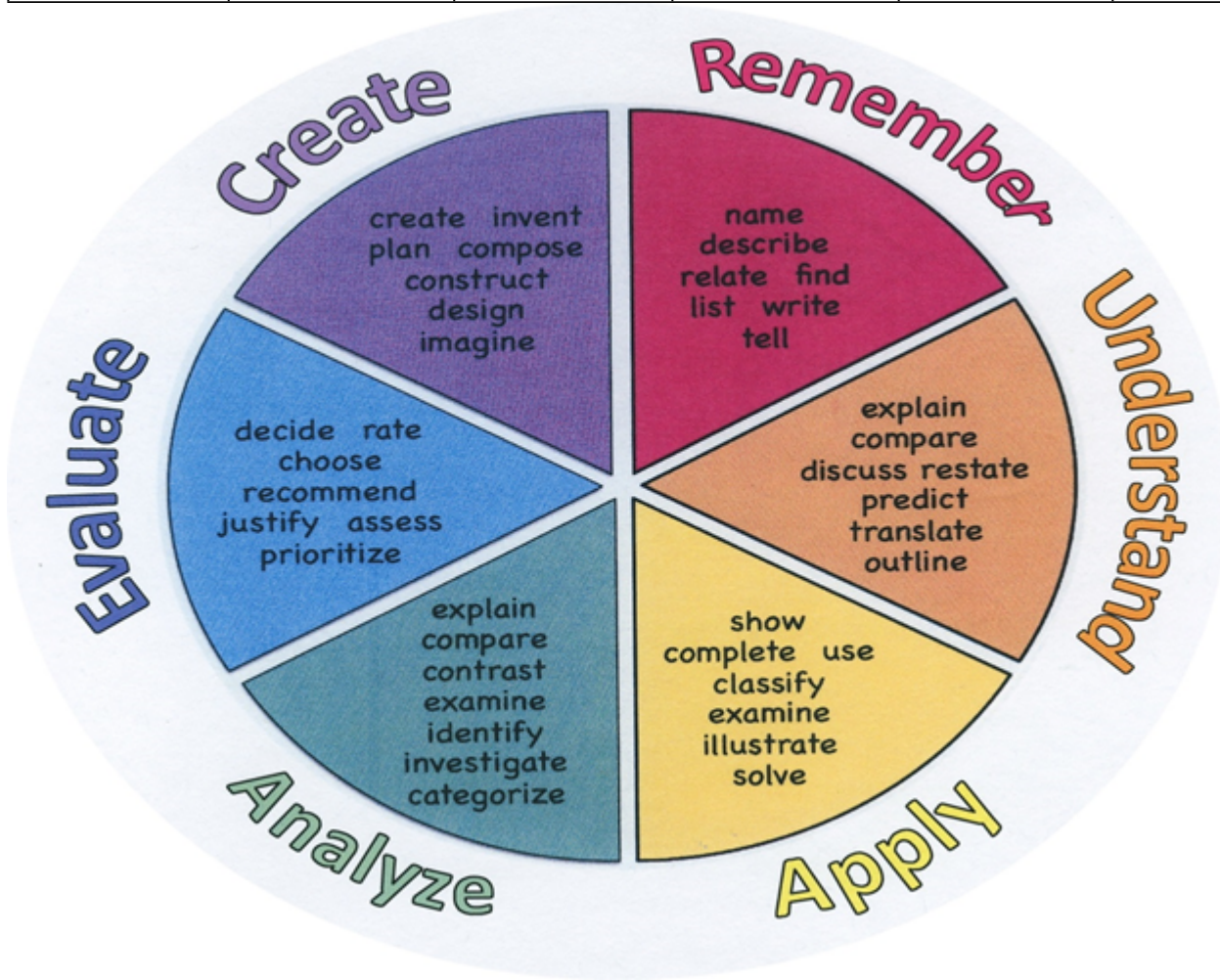
Conduct an oral reading of original poetry; compare and contrast to a silent reading

Study and imitate the form of one poet

Action Verbs: Below are examples of action verbs associated with each level of the Revised Bloom's Taxonomy.

Remember	Understand	Apply	Analyze	Evaluate	Create
Choose	Classify	Choose	Categorize	Appraise	Combine
Describe	Defend	Dramatize	Classify	Judge	Compose
Define	Demonstrate	Explain	Compare	Criticize	Construct
Label	Distinguish	Generalize	Differentiate	Defend	Design
List	Explain	Judge	Distinguish	Compare	Develop
Locate	Express	Organize	Identify	Assess	Formulate
Match	Extend	Paint	Infer	Conclude	Hypothesize
Memorize	Give Examples	Prepare	Point out	Contrast	Invent
Name	Illustrate	Produce	Select	Critique	Make
Omit	Indicate	Select	Subdivide	Determine	Originate
Recite	Interrelate	Show	Survey	Grade	Organize
Select	Interpret	Sketch	Arrange	Justify	Plan
State	Infer	Solve	Breakdown	Measure	Produce
Count	Match	Use	Combine	Rank	Role Play

Draw Outline Point Quote Recall Recognize Repeat Reproduce	Paraphrase Represent Restate Rewrite Select Show Summarize Tell Translate Associate Compute Convert Discuss Estimate Extrapolate Generalize Predict	Add Calculate Change Classify Complete Compute Discover Divide Examine Graph Interpolate Manipulate Modify Operate Subtract	Detect Diagram Discriminate Illustrate Outline Point out Separate	Rate Support Test	Drive Devise Generate Integrate Prescribe Propose Reconstruct Revise Rewrite Transform
---	---	---	---	-------------------------	---



- Includes activities appropriate to the development of the Unit;
- Is comprised of the variety of learning activities that will be referenced in lesson plans, constructed/developed and instructionally delivered in the classroom;
- Are authentic;
- Recognizes the learning styles of the students;
- Integrates problem- or project-based learning.

Assessment Evidence - Checking for Understanding (CFU)

Individual presentation of poetry (alternative assessment)

Poetry selection test (summative assessment)

Classroom discussion and sharing of poetic forms (formative assessment)

- Admit Tickets
- Anticipation Guide
- Common Benchmarks
- Compare & Contrast
- Create a Multimedia Poster
- DBQ's
- Define
- Describe
- Evaluate
- Evaluation rubrics
- Exit Tickets
- Explaining
- Fist- to-Five or Thumb-Ometer
- Illustration
- Journals
- KWL Chart
- Learning Center Activities
- Multimedia Reports
- Newspaper Headline
- Outline
- Question Stems
- Quickwrite
- Quizzes

- Red Light, Green Light
- Self- assessments
- Socratic Seminar
- Study Guide
- Surveys
- Teacher Observation Checklist
- Think, Pair, Share
- Think, Write, Pair, Share
- Top 10 List
- Unit review/Test prep
- Unit tests
- Web-Based Assessments
- Written Reports

Primary Resources & Materials

TEXT BOOK: Creative Writer's Handbook (Third Edition)

Chapter 6: The Elements of Poetry

Chapter 7: Practicing Poetry

Chapter 8: Poetry Problems

Anthology of Poems

*Student independent search and study

Poetry Websites

Personal novels

Excerpts based on student choice

Anthology

Progress

Teacher resources

Scope

Laptops

Ancillary Resources

- Textbook: Lively Writing: The Process of Creative Communication
- Utilize the internet for additional creative writing websites and resources

Technology Infusion

microsoft word

google docs

edmodo

blogs

discussion boards

powerpoint

ted talks

podcasts

prezi

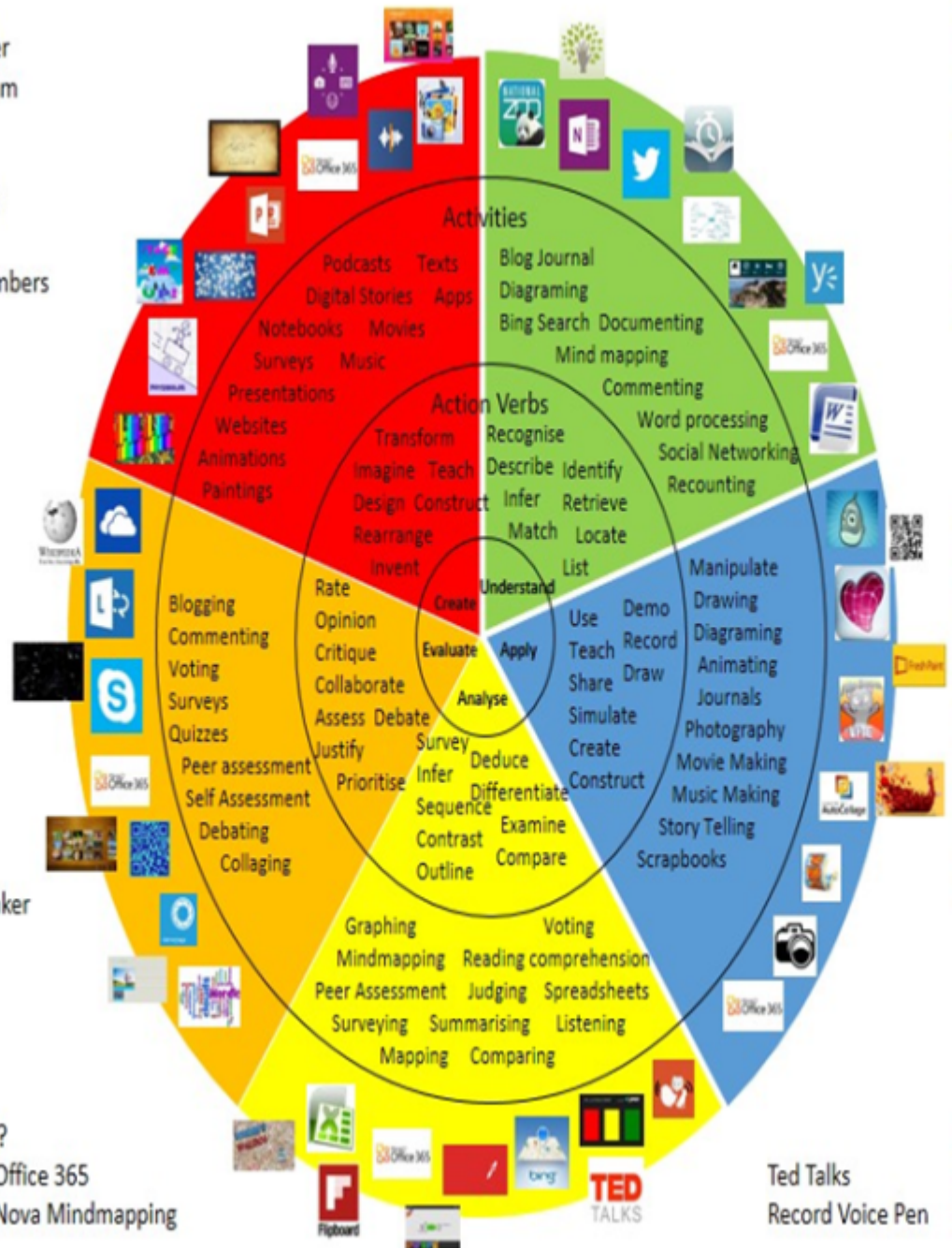
Win 8.1 Apps/Tools Pedagogy Wheel

Podcasts
Photostory 3
Kid Story Builder
Music Maker Jam
Paint A Story
Office 365
MS PowerPoint
Stack 'Em Up
NqSquared Numbers
Physamajig
Xylophone 8

Wikipedia
Skydrive
Lync
SkyMap
Skype
Office 365
Puzzle Touch
Easy QR
Memorylage
Life Moments
Word Cloud Maker

Where's Waldo?
MS Excel
Flipboard
Office 365
Nova Mindmapping

Ted Talks
Record Voice Pen



Originally taken from <http://www.coetail.com/vzimmer/files/2013/02/iPadagogy-Wheel.001.jpg>
And adapted for Windows 8.1 devices by Charlotte Beckhurst @CharBeckhurst

Alignment to 21st Century Skills & Technology

Mastery and infusion of **21st Century Skills & Technology** and their Alignment to the core content areas is essential to student learning. The core content areas include:

- English Language Arts;
- Mathematics;
- Science and Scientific Inquiry (Next Generation);
- Social Studies, including American History, World History, Geography, Government and Civics, and Economics;
- World languages;
- Technology;
- Visual and Performing Arts.

CRP.K-12.CRP1

Act as a responsible and contributing citizen and employee.

CRP.K-12.CRP1.1

Career-ready individuals understand the obligations and responsibilities of being a member of a community, and they demonstrate this understanding every day through their interactions with others. They are conscientious of the impacts of their decisions on others and the environment around them. They think about the near-term and long-term consequences of their actions and seek to act in ways that contribute to the betterment of their teams, families, community and workplace. They are reliable and consistent in going beyond the minimum expectation and in participating in activities that serve the greater good.

CRP.K-12.CRP2

Apply appropriate academic and technical skills.

CRP.K-12.CRP4.1

Career-ready individuals communicate thoughts, ideas, and action plans with clarity, whether using written, verbal, and/or visual methods. They communicate in the workplace with clarity and purpose to make maximum use of their own and others' time. They are excellent writers; they master conventions, word choice, and organization, and use effective tone and presentation skills to articulate ideas. They are skilled at interacting with others; they are active listeners and speak clearly and with purpose. Career-ready individuals think about the audience for their communication and prepare accordingly to ensure the desired outcome.

CRP.K-12.CRP5.1

Career-ready individuals understand the interrelated nature of their actions and regularly

make decisions that positively impact and/or mitigate negative impact on other people, organization, and the environment. They are aware of and utilize new technologies, understandings, procedures, materials, and regulations affecting the nature of their work as it relates to the impact on the social condition, the environment and the profitability of the organization.

CRP.K-12.CRP6.1	Career-ready individuals regularly think of ideas that solve problems in new and different ways, and they contribute those ideas in a useful and productive manner to improve their organization. They can consider unconventional ideas and suggestions as solutions to issues, tasks or problems, and they discern which ideas and suggestions will add greatest value. They seek new methods, practices, and ideas from a variety of sources and seek to apply those ideas to their own workplace. They take action on their ideas and understand how to bring innovation to an organization.
CRP.K-12.CRP7.1	Career-ready individuals are discerning in accepting and using new information to make decisions, change practices or inform strategies. They use reliable research process to search for new information. They evaluate the validity of sources when considering the use and adoption of external information or practices in their workplace situation.
CRP.K-12.CRP8.1	Career-ready individuals readily recognize problems in the workplace, understand the nature of the problem, and devise effective plans to solve the problem. They are aware of problems when they occur and take action quickly to address the problem; they thoughtfully investigate the root cause of the problem prior to introducing solutions. They carefully consider the options to solve the problem. Once a solution is agreed upon, they follow through to ensure the problem is solved, whether through their own actions or the actions of others.
CRP.K-12.CRP9.1	Career-ready individuals consistently act in ways that align personal and community-held ideals and principles while employing strategies to positively influence others in the workplace. They have a clear understanding of integrity and act on this understanding in every decision. They use a variety of means to positively impact the directions and actions of a team or organization, and they apply insights into human behavior to change others' action, attitudes and/or beliefs. They recognize the near-term and long-term effects that management's actions and attitudes can have on productivity, morals and organizational culture.
CRP.K-12.CRP10	Plan education and career paths aligned to personal goals.
CAEP.9.2.12.C.5	Research career opportunities in the United States and abroad that require knowledge of world languages and diverse cultures.
TECH.8.1.12	Educational Technology: All students will use digital tools to access, manage, evaluate, and synthesize information in order to solve problems individually and collaborate and to create and communicate knowledge.
TECH.8.1.12.B	Creativity and Innovation: Students demonstrate creative thinking, construct knowledge and develop innovative products and process using technology.
TECH.8.1.12.B.CS1	Apply existing knowledge to generate new ideas, products, or processes.
TECH.8.1.12.B.CS2	Create original works as a means of personal or group expression.

21st Century Skills/Interdisciplinary Themes

- Communication and Collaboration
- Creativity and Innovation
- Critical thinking and Problem Solving
- ICT (Information, Communications and Technology) Literacy
- Information Literacy

- Life and Career Skills
- Media Literacy

21st Century Skills

- Civic Literacy
- Environmental Literacy
- Financial, Economic, Business and Entrepreneurial Literacy
- Global Awareness
- Health Literacy

CAEP.9.2.12.C.4

Analyze how economic conditions and societal changes influence employment trends and future education.

Differentiation

- Varied resources and texts
- Build on student's strengths
- Teach Strategies for areas of deficiency
- Flexible grouping and pacing
- Various opportunities and choice as to how students demonstrate their learning. They can write, speak, conduct, create, research, record, share, and more.

Differentiations:

- Small group instruction
- Small group assignments
- Extra time to complete assignments
- Pairing oral instruction with visuals
- Repeat directions
- Use manipulatives
- Center-based instruction
- Token economy
- Study guides
- Teacher reads assessments allowed
- Scheduled breaks
- Rephrase written directions
- Multisensory approaches
- Additional time
- Preview vocabulary

- Preview content & concepts
- Story guides
- Behavior management plan
- Highlight text
- Student(s) work with assigned partner
- Visual presentation
- Assistive technology
- Auditory presentations
- Large print edition
- Dictation to scribe
- Small group setting

Hi-Prep Differentiations:

- Alternative formative and summative assessments
- Choice boards
- Games and tournaments
- Group investigations
- Guided Reading
- Independent research and projects
- Interest groups
- Learning contracts
- Leveled rubrics
- Literature circles
- Multiple intelligence options
- Multiple texts
- Personal agendas
- Project-based learning
- Problem-based learning
- Stations/centers
- Think-Tac-Toes
- Tiered activities/assignments
- Tiered products
- Varying organizers for instructions

Lo-Prep Differentiations

- Choice of books or activities
- Cubing activities
- Exploration by interest
- Flexible grouping
- Goal setting with students
- Jigsaw
- Mini workshops to re-teach or extend skills
- Open-ended activities
- Think-Pair-Share
- Reading buddies
- Varied journal prompts
- Varied supplemental materials

Special Education Learning (IEP's & 504's)

- Modifications as dictated in the student's IEP/504 Plan
- Additional time for skill mastery
- Behavior management plan
- Modified test/test length
- Study guides provided

- printed copy of board work/notes provided
- additional time for skill mastery
- assistive technology
- behavior management plan
- Center-Based Instruction
- check work frequently for understanding
- computer or electronic device utilizes
- extended time on tests/ quizzes
- have student repeat directions to check for understanding
- highlighted text visual presentation
- modified assignment format
- modified test content
- modified test format
- modified test length
- multiple test sessions
- multi-sensory presentation
- preferential seating
- preview of content, concepts, and vocabulary
- Provide modifications as dictated in the student's IEP/504 plan
- reduced/shortened reading assignments
- Reduced/shortened written assignments
- secure attention before giving instruction/directions
- shortened assignments
- student working with an assigned partner

- teacher initiated weekly assignment sheet
- Use open book, study guides, test prototypes

English Language Learning (ELL)

- Using videos, illustrations, pictures and drawings to explain or clarify
- Providing study guides
- Decreasing amount of work presented/required
- Modifying tests
- Allow the use of note cards and/or open book during testing
- Allowing students to write in their native languages and then translating that into English.

- teaching key aspects of a topic. Eliminate nonessential information
- using videos, illustrations, pictures, and drawings to explain or clarify
- allowing products (projects, timelines, demonstrations, models, drawings, dioramas, poster boards, charts, graphs, slide shows, videos, etc.) to demonstrate student's learning;
- allowing students to correct errors (looking for understanding)
- allowing the use of note cards or open-book during testing
- decreasing the amount of work presented or required
- having peers take notes or providing a copy of the teacher's notes
- modifying tests to reflect selected objectives
- providing study guides
- reducing or omitting lengthy outside reading assignments
- reducing the number of answer choices on a multiple choice test
- tutoring by peers
- using computer word processing spell check and grammar check features
- using true/false, matching, or fill in the blank tests in lieu of essay tests

At Risk

- Using videos, illustrations, pictures and drawings to explain or clarify
- Providing study guides
- Decreasing amount of work presented/required
- Modifying tests

- Allow students to correct errors
 - Reduce lengthy reading assignments
-
- allowing students to correct errors (looking for understanding)
 - teaching key aspects of a topic. Eliminate nonessential information
 - allowing products (projects, timelines, demonstrations, models, drawings, dioramas, poster boards, charts, graphs, slide shows, videos, etc.) to demonstrate student's learning
 - allowing students to select from given choices
 - allowing the use of note cards or open-book during testing
 - collaborating (general education teacher and specialist) to modify vocabulary, omit or modify items to reflect objectives for the student, eliminate sections of the test, and determine how the grade will be determined prior to giving the test.
 - decreasing the amount of work presented or required
 - having peers take notes or providing a copy of the teacher's notes
 - marking students' correct and acceptable work, not the mistakes
 - modifying tests to reflect selected objectives
 - providing study guides
 - reducing or omitting lengthy outside reading assignments
 - reducing the number of answer choices on a multiple choice test
 - tutoring by peers
 - using authentic assessments with real-life problem-solving
 - using true/false, matching, or fill in the blank tests in lieu of essay tests
 - using videos, illustrations, pictures, and drawings to explain or clarify

Talented and Gifted Learning (T&G)

- Advanced problem-solving
 - Higher order, critical and creative thinking skills and discovery
 - Allow students to work at faster pace
 - Create a blog
 - Complete activities aligned with above grade level text using Benchmark results
-
- Above grade level placement option for qualified students
 - Advanced problem-solving
 - Allow students to work at a faster pace
 - Cluster grouping
 - Complete activities aligned with above grade level text using Benchmark results
 - Create a blog or social media page about their unit
 - Create a plan to solve an issue presented in the class or in a text

- Debate issues with research to support arguments
- Flexible skill grouping within a class or across grade level for rigor
- Higher order, critical & creative thinking skills, and discovery
- Multi-disciplinary unit and/or project
- Teacher-selected instructional strategies that are focused to provide challenge, engagement, and growth opportunities
- Utilize exploratory connections to higher-grade concepts
- Utilize project-based learning for greater depth of knowledge

Sample Lesson

UNIT 1 POETRY

Statement of Objective: Compose a paragraph of description using metaphor, simile, alliteration, and sound words

Anticipatory Set/Do Now:

Using a 3-column chart with the headings: pleasant, neutral, unpleasant, list as many sound words (onomatopoeia) as you can under its proper heading.

Learning Activity:

Notice the reactions of students when unpleasant sounds are described. Explain that they are "experiencing" that sound when they cringe. When writers paint a picture using the senses, readers can actually experience what is being written.

Distribute the handouts. Students will first apply their knowledge of metaphors, similes, alliteration, and sound words by completing sentences with the correct figurative language. After correcting whole group, students will read, annotate, and analyze descriptive language in JK Rowling's "The Monster." Finally, small groups will mirror Rowling's writing by creating a similar descriptive paragraph. Handouts attached.

Student Assessment/CFU's:
think, write, pair, share

describe

evaluate

Materials:

The Monster

writing notebooks

figurative language practice

21st Century Themes and Skills:

communication and collaboration

Creativity and innovation

Differentiation/Modifications:

provide examples

provide stems

model close reading

Integration of Technology:

If possible, type paragraphs on laptops and perform a read aloud for the class.

LA.RL.11-12.3

Analyze the impact of the author's choices regarding how to develop and relate elements of a story or drama (e.g., where a story is set, how the action is ordered, how the characters are introduced and developed).

- LA.RL.11-12.4 Determine the meaning of words and phrases as they are used in the text, including figurative and connotative meanings; analyze the impact of specific word choices on meaning and tone, including words with multiple meanings or language that is particularly fresh, engaging, or beautiful. (e.g., Shakespeare as well as other authors.)
- LA.RL.11-12.5 Analyze how an author's choices concerning how to structure specific parts of a text (e.g., the choice of where to begin or end a story, the choice to provide a comedic or tragic resolution) contribute to its overall structure and meaning as well as its aesthetic impact.
- LA.RL.11-12.6 Analyze a case in which grasping a point of view requires distinguishing what is directly stated in a text from what is really meant (e.g., satire, sarcasm, irony, or understatement).
- LA.W.11-12.3 Write narratives to develop real or imagined experiences or events using effective technique, well-chosen details, and well-structured event sequences.