

Unit 5-Cutting Techniques/Sanding & Staining

Content Area: **CTE**
Course(s): **Basic Woodworking**
Time Period: **MayJun**
Length: **38 Days**
Status: **Published**

Title Section

Department of Curriculum and Instruction



Belleville Public Schools

Curriculum Guide

Unit 5-Cutting Techniques/Sanding & Staining

Belleville Board of Education

102 Passaic Avenue

Belleville, NJ 07109

Prepared by: **Frank Longo**

Dr. Richard Tomko, Ph.D., M.J., Superintendent of Schools

Ms. LucyAnn Demikoff, Director of Curriculum and Instruction K-12

Ms. Nicole Shanklin, Director of Elementary Education K-8, ESL Coordinator K-12

Mr. George Droste, Director of Secondary Education

Board Approved: September 23, 2019

Unit Overview

Students will understand how to sand a finished project. Next the students will develop the proper staining techniques while preparing the steel wool application to stain. Students will identify the proper tools for cutting wood and follow safety protocols for using cutting equipment.

Enduring Understanding

- Understand the importance of identifying and recognizing curves and different materials being used in projects.
- Understand the importance of identifying and recognizing various hand/power tools used in production

Essential Questions

How do you turn on the band saw?

What is the reason sanding is needed?

Why do we need to stain wood projects?

Do we need to wear a mask when staining?

How do you develop a curved cut on wood?

What is a band saw?

Exit Skills

Students will be able to....

Learn how to cut wood on band saw

How to properly sand finished projects

Develop and understand the functions of staining wood.

Comprehend the safety protocols when using stain.

New Jersey Student Learning Standards (NJSL-S)

9.3.12.AC

Architecture & Construction

9.3.12.AC.1

Use vocabulary, symbols and formulas common to architecture and construction.

9.3.12.AC.2	Use architecture and construction skills to create and manage a project.
9.3.12.AC.3	Comply with regulations and applicable codes to establish and manage a legal and safe workplace.
9.3.12.AC.4	Evaluate the nature and scope of the Architecture & Construction Career Cluster and the role of architecture and construction in society and the economy.
9.3.12.AC.5	Describe the roles, responsibilities, and relationships found in the architecture and construction trades and professions, including labor/management relationships.
9.3.12.AC.6	Read, interpret and use technical drawings, documents and specifications to plan a project.
9.3.12.AC.7	Describe career opportunities and means to achieve those opportunities in each of the Architecture & Construction Career Pathways.
9.3.12.AC-CST	Construction

Interdisciplinary Connections

	Key Ideas and Details
LA.RL.11-12.1	Cite strong and thorough textual evidence and make relevant connections to support analysis of what the text says explicitly as well as inferences drawn from the text, including determining where the text leaves matters uncertain.
LA.RL.11-12.2	Determine two or more themes or central ideas of a text and analyze their development over the course of the text, including how they interact and build on one another to produce a complex account; provide an objective summary of the text.
LA.RL.11-12.3	Analyze the impact of the author's choices regarding how to develop and relate elements of a story or drama (e.g., where a story is set, how the action is ordered, how the characters are introduced and developed).
MA.A-SSE.B	Write expressions in equivalent forms to solve problems
LA.RL.11-12.7	Analyze multiple interpretations of a story, drama, or poem (e.g., recorded or live production of a play or recorded novel or poetry), evaluating how each version interprets the source text. (e.g., Shakespeare and other authors.)
LA.RL.11-12.8	(Not applicable to literature)
LA.RL.11-12.9	Demonstrate knowledge of and reflect on (e.g., practical knowledge, historical/cultural context, and background knowledge) eighteenth-, nineteenth- and early twentieth-century foundational works of literature, including how two or more texts from the same period treat similar themes or topics.
MA.A-CED	Creating Equations
MA.A-CED.A	Create equations that describe numbers or relationships
	Comprehension and Collaboration
LA.SL.11-12.1	Initiate and participate effectively in a range of collaborative discussions (one-on-one, in groups, and teacher-led) with peers on grades 11–12 topics, texts, and issues, building on others' ideas and expressing their own clearly and persuasively.
LA.SL.11-12.1.A	Come to discussions prepared, having read and researched material under study; explicitly draw on that preparation by referring to evidence from texts and other research on the topic or issue to stimulate a thoughtful, well reasoned exchange of ideas.
LA.SL.11-12.1.B	Collaborate with peers to promote civil, democratic discussions and decision-making, set clear goals and assessments (e.g., student developed rubrics), and establish individual roles as needed.

LA.SL.11-12.1.C

Propel conversations by posing and responding to questions that probe reasoning and evidence; ensure a hearing for a full range of positions on a topic or issue; clarify, verify, or challenge ideas and conclusions; and promote divergent and creative perspectives.

LA.SL.11-12.1.D

Respond thoughtfully to diverse perspectives; synthesize comments, claims, and evidence made on all sides of an issue; resolve contradictions when possible; and determine what additional information or research is required to deepen the investigation or complete the task.

Learning Objectives

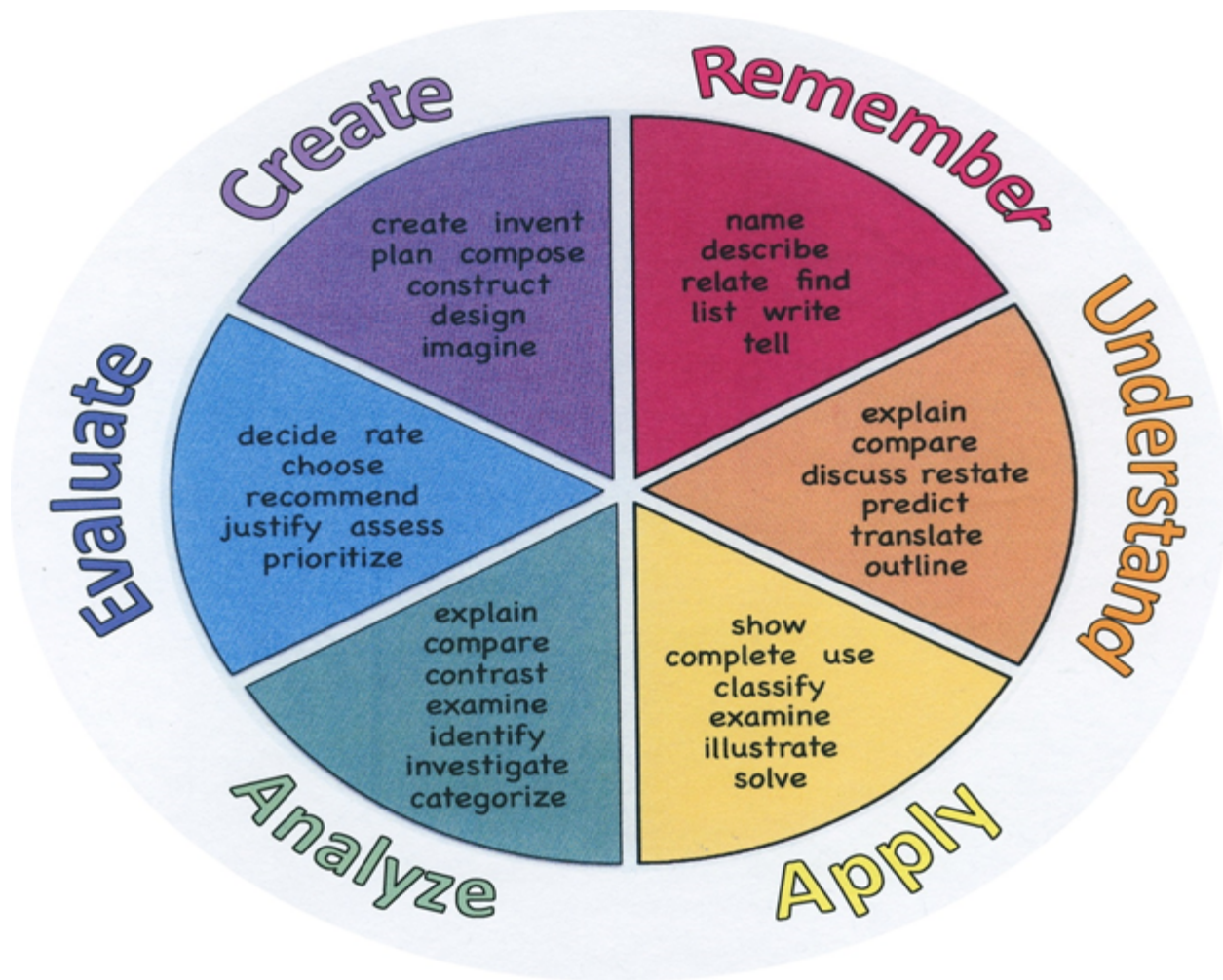
Students will be able to....

Design a curved cut on a piece of wood

Construct a final finished stained project

Plan and develop a timeline for development of project

Remember	Understand	Apply	Analyze	Evaluate	Create
Choose	Classify	Choose	Categorize	Appraise	Combine
Describe	Defend	Dramatize	Classify	Judge	Compose
Define	Demonstrate	Explain	Compare	Criticize	Construct
Label	Distinguish	Generalize	Differentiate	Defend	Design
List	Explain	Judge	Distinguish	Compare	Develop
Locate	Express	Organize	Identify	Assess	Formulate
Match	Extend	Paint	Infer	Conclude	Hypothesize
Memorize	Give Examples	Prepare	Point out	Contrast	Invent
Name	Illustrate	Produce	Select	Critique	Make
Omit	Indicate	Select	Subdivide	Determine	Originate
Recite	Interrelate	Show	Survey	Grade	Organize
Select	Interpret	Sketch	Arrange	Justify	Plan
State	Infer	Solve	Breakdown	Measure	Produce
Count	Match	Use	Combine	Rank	Role Play
Draw	Paraphrase	Add	Detect	Rate	Drive
Outline	Represent	Calculate	Diagram	Support	Devise
Point	Restate	Change	Discriminate	Test	Generate
Quote	Rewrite	Classify	Illustrate		Integrate
Recall	Select	Complete	Outline		Prescribe
Recognize	Show	Compute	Point out		Propose
Repeat	Summarize	Discover	Separate		Reconstruct
Reproduce	Tell	Divide			Revise
	Translate	Examine			Rewrite
	Associate	Graph			Transform
	Compute	Interpolate			
	Convert	Manipulate			
	Discuss	Modify			
	Estimate	Operate			
	Extrapolate	Subtract			
	Generalize				
	Predict				



Suggested Activities & Best Practices

- Students will learn how to cut precise angles on band saw
- Students will properly sand wood projects throughout the construction process
- Students will stain wood and use steel wool during the process

Assessment Evidence - Checking for Understanding (CFU)

- Students will be given quizzes on application of staining wood and using steel wool
- Students will compare and contrast recently completed projects-benchmark assessment
- Students will evaluate all cuts on band saw and measure cuts before constructing projects-benchmark assessment

Unit test-summative assessment

Think, pair, share-formative assessment

- Students will stain wood and use steel wool during the process.-alternate assessment

- Admit Tickets
- Anticipation Guide
- Common Benchmarks
- Compare & Contrast
- Create a Multimedia Poster
- DBQ's
- Define
- Describe
- Evaluate
- Evaluation rubrics
- Exit Tickets
- Explaining
- Fist- to-Five or Thumb-Ometer
- Illustration
- Journals
- KWL Chart
- Learning Center Activities
- Multimedia Reports
- Newspaper Headline
- Outline
- Question Stems
- Quickwrite
- Quizzes
- Red Light, Green Light

- Self- assessments
- Socratic Seminar
- Study Guide
- Surveys
- Teacher Observation Checklist
- Think, Pair, Share
- Think, Write, Pair, Share
- Top 10 List
- Unit review/Test prep
- Unit tests
- Web-Based Assessments
- Written Reports

Primary Resources & Materials

Basic Woodworking Fundamentals-Wilcox Company

Desktop PC

Internet

Ancillary Resources

YouTube Training Videos

Scholarly Videos

Media Center

Technology Infusion

Band Saw-Students will cut all wood for projects precisely on band saw

Internet/Desktop-Will be used to watch videos on band saw operation and staining wood

Belt Sander-Students will use belt sander to smooth unfinished surfaces

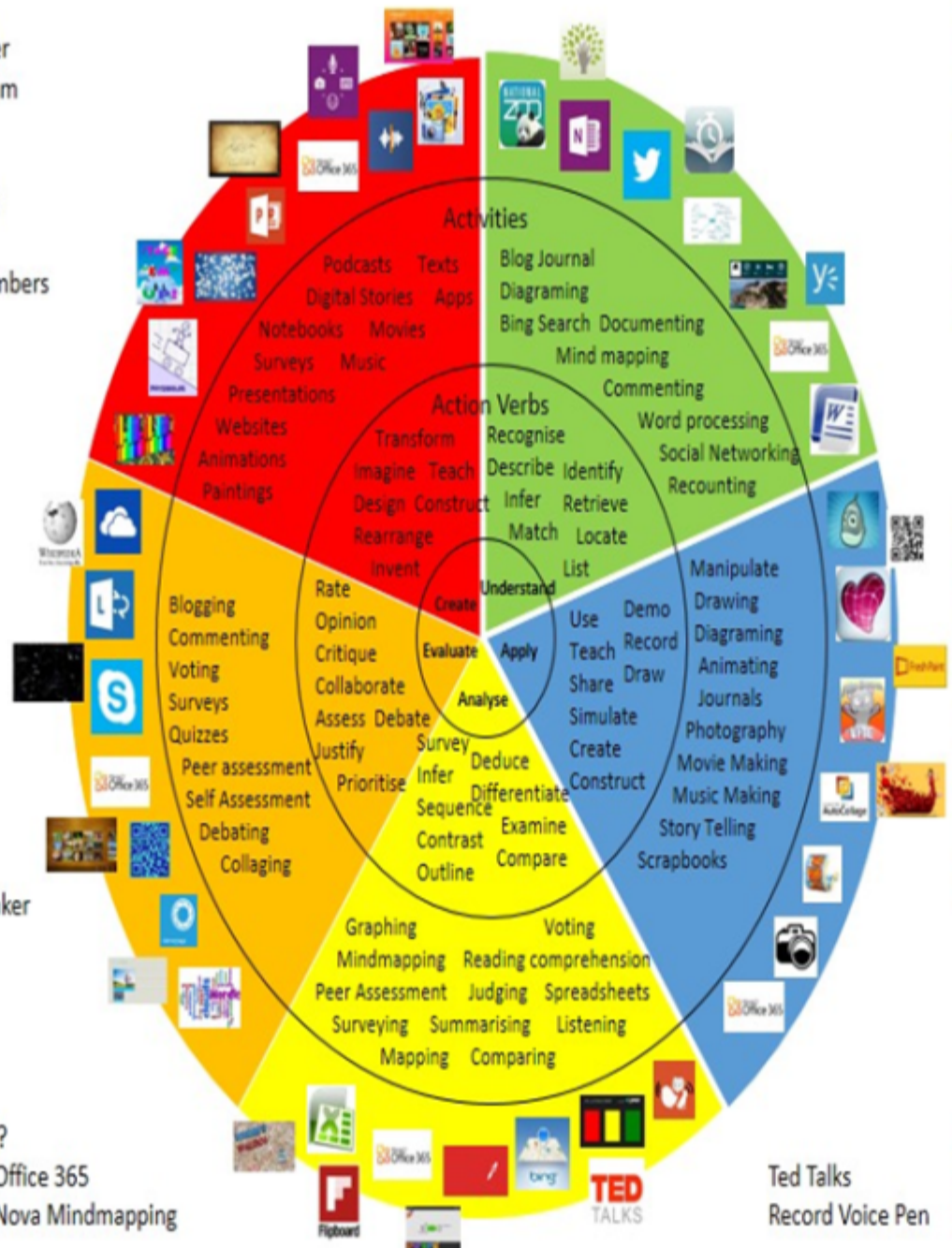
Stain-Students will apply stain to finished projects for protection

Wood putty-Putty will be used to fill in imperfections

Originally taken from <http://www.coetail.com/vzimmer/files/2013/02/IPadagogy-Wheel.001.jpg>
And adapted for Windows 8.1 devices by Charlotte Beckhurst @CharBeckhurst

Wikipedia
Skydrive
Lync
SkyMap
Skype
Office 365
Puzzle Touch
Easy QR
Memorylage
Life Moments
Word Cloud Maker

Ted Talks
Record Voice Pen



Alignment to 21st Century Skills & Technology

CRP.K-12.CRP1	Act as a responsible and contributing citizen and employee.
CRP.K-12.CRP1.1	Career-ready individuals understand the obligations and responsibilities of being a member of a community, and they demonstrate this understanding every day through their interactions with others. They are conscientious of the impacts of their decisions on others and the environment around them. They think about the near-term and long-term consequences of their actions and seek to act in ways that contribute to the betterment of their teams, families, community and workplace. They are reliable and consistent in going beyond the minimum expectation and in participating in activities that serve the greater good.
CRP.K-12.CRP2	Apply appropriate academic and technical skills.
CRP.K-12.CRP2.1	Career-ready individuals readily access and use the knowledge and skills acquired through experience and education to be more productive. They make connections between abstract concepts with real-world applications, and they make correct insights about when it is appropriate to apply the use of an academic skill in a workplace situation.
CRP.K-12.CRP4	Communicate clearly and effectively and with reason.
CRP.K-12.CRP4.1	Career-ready individuals communicate thoughts, ideas, and action plans with clarity, whether using written, verbal, and/or visual methods. They communicate in the workplace with clarity and purpose to make maximum use of their own and others' time. They are excellent writers; they master conventions, word choice, and organization, and use effective tone and presentation skills to articulate ideas. They are skilled at interacting with others; they are active listeners and speak clearly and with purpose. Career-ready individuals think about the audience for their communication and prepare accordingly to ensure the desired outcome.
CRP.K-12.CRP6	Demonstrate creativity and innovation.
CRP.K-12.CRP6.1	Career-ready individuals regularly think of ideas that solve problems in new and different ways, and they contribute those ideas in a useful and productive manner to improve their organization. They can consider unconventional ideas and suggestions as solutions to issues, tasks or problems, and they discern which ideas and suggestions will add greatest value. They seek new methods, practices, and ideas from a variety of sources and seek to apply those ideas to their own workplace. They take action on their ideas and understand how to bring innovation to an organization.
CAEP.9.2.12.C.3	Identify transferable career skills and design alternate career plans.
CAEP.9.2.12.C.5	Research career opportunities in the United States and abroad that require knowledge of world languages and diverse cultures.
TECH.8.1.12.A	Technology Operations and Concepts: Students demonstrate a sound understanding of technology concepts, systems and operations.
TECH.8.1.12.A.CS1	Understand and use technology systems.
TECH.8.1.12.A.CS2	Select and use applications effectively and productively.
TECH.8.1.12.B	Creativity and Innovation: Students demonstrate creative thinking, construct knowledge and develop innovative products and process using technology.
TECH.8.1.12.B.2	Apply previous content knowledge by creating and piloting a digital learning game or tutorial.
TECH.8.1.12.B.CS1	Apply existing knowledge to generate new ideas, products, or processes.

21st Century Skills/Interdisciplinary Themes

- Communication and Collaboration
- Creativity and Innovation
- Critical thinking and Problem Solving
- ICT (Information, Communications and Technology) Literacy
- Information Literacy
- Life and Career Skills
- Media Literacy

21st Century Skills

- Civic Literacy
- Environmental Literacy
- Financial, Economic, Business and Entrepreneurial Literacy
- Global Awareness
- Health Literacy

Differentiation

- Students will work in small groups when staining wood and use steel wool to apply
- Students will be given extra time to complete all staining and project development
- Scheduled breaks will be given when needed while operating mechanical equipment

Differentiations:

- Small group instruction
- Small group assignments
- Extra time to complete assignments
- Pairing oral instruction with visuals
- Repeat directions
- Use manipulatives
- Center-based instruction
- Token economy
- Study guides
- Teacher reads assessments allowed
- Scheduled breaks
- Rephrase written directions

- Multisensory approaches
- Additional time
- Preview vocabulary
- Preview content & concepts
- Story guides
- Behavior management plan
- Highlight text
- Student(s) work with assigned partner
- Visual presentation
- Assistive technology
- Auditory presentations
- Large print edition
- Dictation to scribe
- Small group setting

Hi-Prep Differentiations:

- Alternative formative and summative assessments
- Choice boards
- Games and tournaments
- Group investigations
- Guided Reading
- Independent research and projects
- Interest groups
- Learning contracts
- Leveled rubrics
- Literature circles
- Multiple intelligence options
- Multiple texts
- Personal agendas
- Project-based learning
- Problem-based learning
- Stations/centers
- Think-Tac-Toes
- Tiered activities/assignments
- Tiered products
- Varying organizers for instructions

Lo-Prep Differentiations

- Choice of books or activities
- Cubing activities
- Exploration by interest
- Flexible grouping
- Goal setting with students
- Jigsaw
- Mini workshops to re-teach or extend skills
- Open-ended activities
- Think-Pair-Share
- Reading buddies
- Varied journal prompts
- Varied supplemental materials

Special Education Learning (IEP's & 504's)

- Students will be given extra time for mastery when applying stain and using band saw
- Students will read all instructions back prior to applying stain and operating band saw
- Students will work with an assigned partner when staining wood and cutting on band saw

- printed copy of board work/notes provided
- additional time for skill mastery
- assistive technology
- behavior management plan
- Center-Based Instruction
- check work frequently for understanding
- computer or electronic device utilizes
- extended time on tests/ quizzes
- have student repeat directions to check for understanding
- highlighted text visual presentation
- modified assignment format
- modified test content
- modified test format
- modified test length
- multi-sensory presentation
- multiple test sessions
- preferential seating
- preview of content, concepts, and vocabulary
- Provide modifications as dictated in the student's IEP/504 plan
- reduced/shortened reading assignments
- Reduced/shortened written assignments
- secure attention before giving instruction/directions
- shortened assignments
- student working with an assigned partner
- teacher initiated weekly assignment sheet
- Use open book, study guides, test prototypes

English Language Learning (ELL)

- Students will be given Youtube links to watch videos on how to stain wood properly and safely
- Students will have peer to peer tutoring when applying stain and using the band saw
- Study guides will be provided when applying stain

- teaching key aspects of a topic. Eliminate nonessential information
- using videos, illustrations, pictures, and drawings to explain or clarify
- allowing products (projects, timelines, demonstrations, models, drawings, dioramas, poster boards, charts, graphs, slide shows, videos, etc.) to demonstrate student's learning;
- allowing students to correct errors (looking for understanding)
- allowing the use of note cards or open-book during testing
- decreasing the amount of work presented or required
- having peers take notes or providing a copy of the teacher's notes
- modifying tests to reflect selected objectives
- providing study guides
- reducing or omitting lengthy outside reading assignments
- reducing the number of answer choices on a multiple choice test
- tutoring by peers
- using computer word processing spell check and grammar check features
- using true/false, matching, or fill in the blank tests in lieu of essay tests

At Risk

- Students will be given Youtube links to watch videos on how to stain wood properly and safely
- Students will have peer to peer tutoring when applying stain and using the band saw
- Study guides will be provided when applying stain

- allowing students to correct errors (looking for understanding)
- teaching key aspects of a topic. Eliminate nonessential information
- allowing products (projects, timelines, demonstrations, models, drawings, dioramas, poster boards, charts, graphs, slide shows, videos, etc.) to demonstrate student's learning
- allowing students to select from given choices
- allowing the use of note cards or open-book during testing
- collaborating (general education teacher and specialist) to modify vocabulary, omit or modify items to reflect objectives for the student, eliminate sections of the test, and determine how the grade will be determined prior to giving the test.

- decreasing the amount of work presented or required
- having peers take notes or providing a copy of the teacher's notes
- marking students' correct and acceptable work, not the mistakes
- modifying tests to reflect selected objectives
- providing study guides
- reducing or omitting lengthy outside reading assignments
- reducing the number of answer choices on a multiple choice test
- tutoring by peers
- using authentic assessments with real-life problem-solving
- using true/false, matching, or fill in the blank tests in lieu of essay tests
- using videos, illustrations, pictures, and drawings to explain or clarify

Talented and Gifted Learning (T&G)

-Students will debate all issues that arise when measurements and stain is complete on projects

-Students will be allowed to work at a faster pace when staining wood and sanding wood for finished projects

- Above grade level placement option for qualified students
- Advanced problem-solving
- Allow students to work at a faster pace
- Cluster grouping
- Complete activities aligned with above grade level text using Benchmark results
- Create a blog or social media page about their unit
- Create a plan to solve an issue presented in the class or in a text
- Debate issues with research to support arguments
- Flexible skill grouping within a class or across grade level for rigor
- Higher order, critical & creative thinking skills, and discovery
- Multi-disciplinary unit and/or project
- Teacher-selected instructional strategies that are focused to provide challenge, engagement, and growth opportunities
- Utilize exploratory connections to higher-grade concepts
- Utilize project-based learning for greater depth of knowledge

Sample Lesson

Using the template below, please develop a **Sample Lesson** for the first unit only.

Unit Name:

NJSLS:

Interdisciplinary Connection:

Statement of Objective:

Anticipatory Set/Do Now:

Learning Activity:

Student Assessment/CFU's:

Materials:

21st Century Themes and Skills:

Differentiation/Modifications:

Integration of Technology: