

CAE-II- Unit 3A-Interpret-Read-Blueprints- SECTIONS

Computer Aided Engineering

* Required

1. Email address *

2. First Name *

3. Last Name *

4. Email *

5. When merging more than one drawing to create an assembly drawing, the AutoCAD command to use is ____.*

Mark only one oval.

☐ List

☐ Paste

☐ Insert

☐ Find

6. Which of the following components must be the same when creating an assembly drawing? *

Mark only one oval.

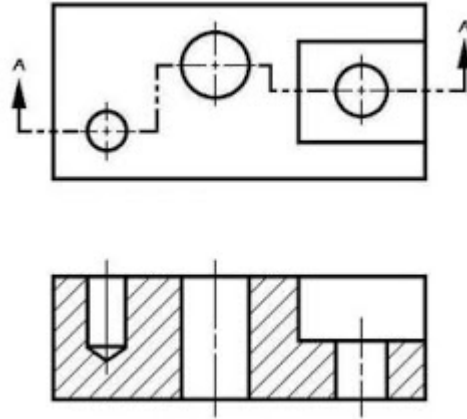
- ☐ Materials
- ☐ Line type
- ☐ Color
- ☐ Scale

7. What is the main purpose of an assembly drawing? *

Mark only one oval.

- ☐ Describes the parts in 3-D
- ☐ Describes the general parts
- ☐ Shows the parts as they fit together
- ☐ Shows the types of materials

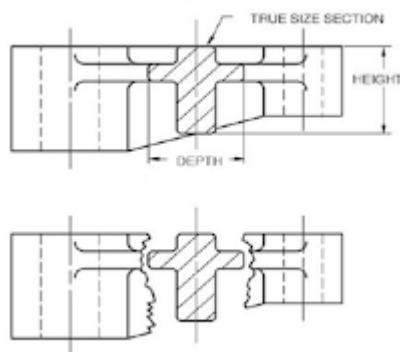
8. A/An ____ section is shown below. *



Mark only one oval.

- ☐ removed
- ☐ offset
- ☐ revolved
- ☐ broken out

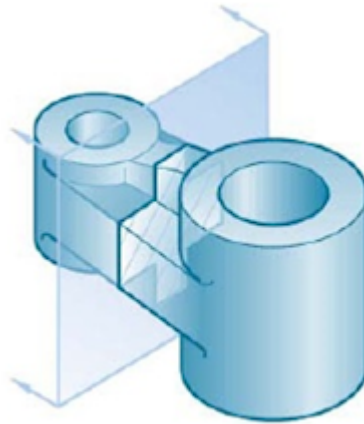
9. A _____ section is shown below. *



Mark only one oval.

- ☐ A. Revolved
- ☐ B. Rotated
- ☐ C. Removed
- ☐ D. Both A and B

10. Which section is needed for the drawing below? *



Mark only one oval.

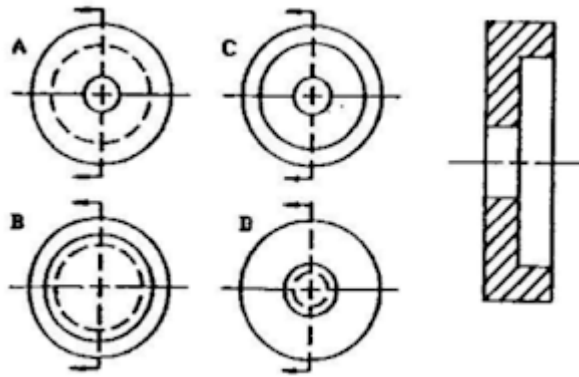
☐ Revolved

☐ Removed

☐ Rotated

☐ Offset

11. The correct solution to the drawing on the right is illustrated by: *

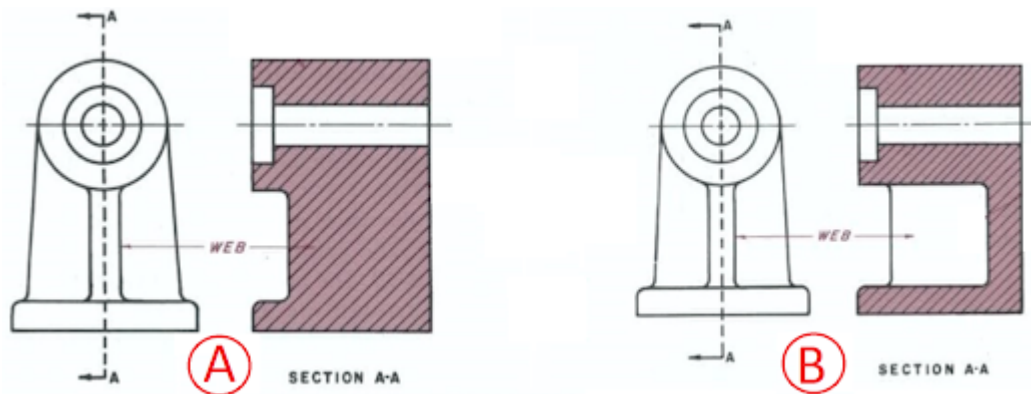


Mark only one oval.

- ☐ A
- ☐ B
- ☐ C
- ☐ D

12. Which image depicts the conventional method of cutting a section through a web? *

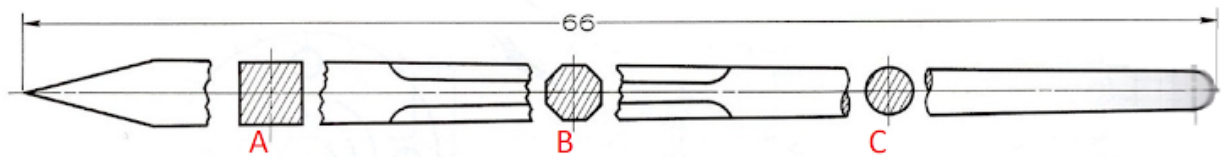
*



Mark only one oval.

- ☐ Image A
- ☐ Image B
- ☐ They are both acceptable
- ☐ Neither A nor B are acceptable

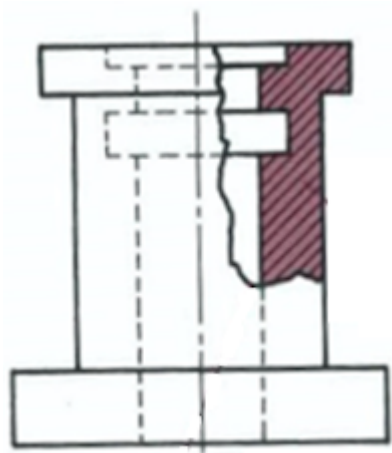
13. Which of the section represents a REMOVED section? *



Mark only one oval.

- ☐ Section at "A"
- ☐ Section at "B"
- ☐ Section at "C"
- ☐ None of the above

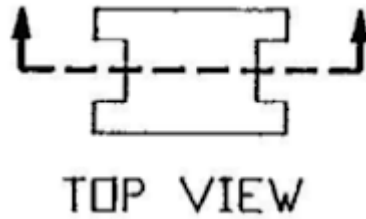
14. The section below is a _____ section. *



Mark only one oval.

- ☐ Removed
- ☐ Exploded
- ☐ Broken-out
- ☐ Piece

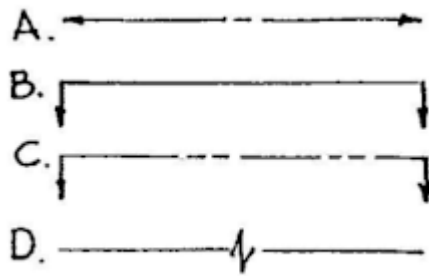
15. The cutting plane shown below indicates drawing a section that will take the place of which view? *



Mark only one oval.

- ☐ Front
- ☐ Left side
- ☐ Right Side
- ☐ Top

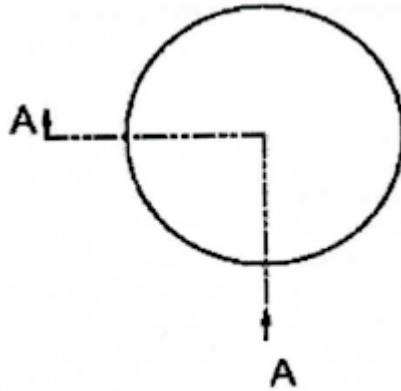
16. The best example of a cutting plane line shown below is:



Mark only one oval.

- ☐ A
- ☐ B
- ☐ C
- ☐ D

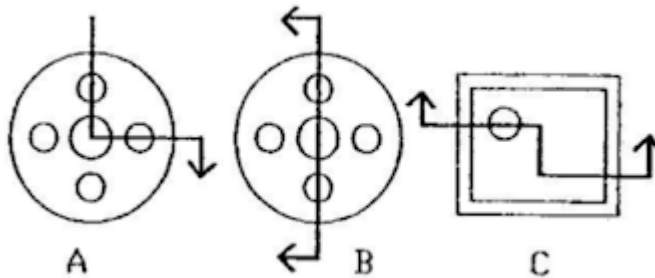
17. A ____ section is shown below.



Mark only one oval.

- ☐ full
- ☐ three-quarter
- ☐ half
- ☐ quarter

18. Which of the cutting plane lines shown below would indicate a 1/2 section? *



Mark only one oval.

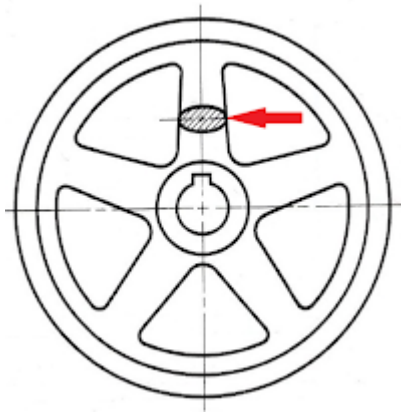
- ☐ A
- ☐ B
- ☐ C

19. Which of the following describes all of the parts in an assembly? *

Mark only one oval.

- ☐ Title block
- ☐ Production sheet
- ☐ Work order
- ☐ Bill of materials





20. The red arrow is pointing to a _____. *



Mark only one oval.

- ☐ right side view
- ☐ revolved section
- ☐ removed front view
- ☐ front section

21. Which of the following is a center line? *

- A. 
- B. 
- C. 
- D. 

Mark only one oval.

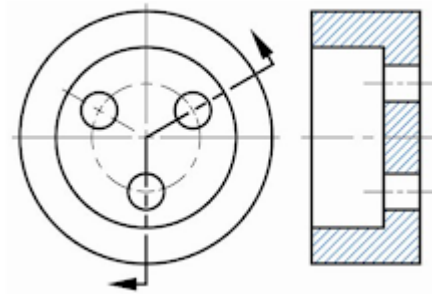
- ☐ A
- ☐ B
- ☐ C
- ☐ D

22. Use hatching in an assembly section drawing to *

Mark only one oval.

- ☐ A. indicate materials
- ☐ B. clarify dimensions
- ☐ C. shade pictorial drawings
- ☐ D. clarify manufacturing process

23. Which of the following sections is shown below? *



Mark only one oval.

- ☐ broken out
- ☐ aligned
- ☐ offset
- ☐ revolved

24. Which GD&T symbol does the image below represent? *



Mark only one oval.

- ☐ Runout
- ☐ Total Runout
- ☐ Profile of a Line
- ☐ Flatness

25. Which GD&T symbol does the image below represent? *



Mark only one oval.

- ☐ Parallelism
- ☐ Symmetry
- ☐ Total runout
- ☐ Straightness

26. Which GD&T symbol does the image below represent? *



Mark only one oval.

- ☐ Cylindricity
- ☐ Concentricity
- ☐ Profile of a Surface
- ☐ Circularity

27. Which GD&T symbol does the image below represent? *



Mark only one oval.

- ☐ Straightness
- ☐ Profile of a Surface
- ☐ Profile of a Line
- ☐ Flatness

28. Which GD&T symbol does the image below represent? *



Mark only one oval.

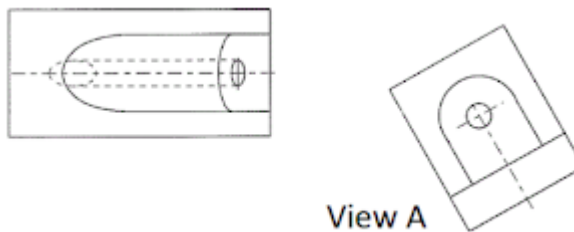
- ☐ Straightness
- ☐ Profile of a Line
- ☐ Profile of a Surface
- ☐ Perpendicularity

29. The line coordinates (0,0), (2,0), (2,4), (0,4), and (0,0) describe a *

Mark only one oval.

- ☐ Circle
- ☐ rectangle
- ☐ square
- ☐ 3-D square

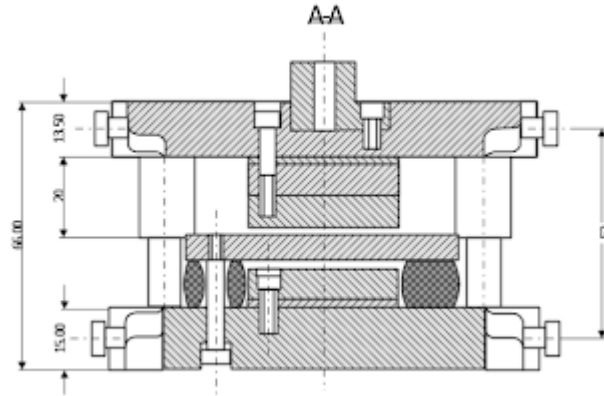
30. In the figure below, view "A" is a/an _____ view. *



Mark only one oval.

- ☐ Oblique
- ☐ Revolved
- ☐ Auxiliary
- ☐ Aligned

31. The drawing below represents a (n) _____ drawing. *



Mark only one oval.

- ☐ front section
- ☐ assembly section
- ☐ side section
- ☐ top section

32. The portion of the drawing that contains information about the type of material, number of parts, and identifies each part on the drawing is the _____.

Mark only one oval.

- ☐ border
- ☐ general notes
- ☐ bill of materials
- ☐ title block

33. The _____ includes all of the components in an assembly. *

Mark only one oval.

- ☐ production sheet
- ☐ work order
- ☐ parts list
- ☐ title block

34. The primary purpose of an assembly drawing is to *

Mark only one oval.

- ☐ describe the shape of parts
- ☐ show the parts as they fit together
- ☐ show the types of materials
- ☐ describe the parts in 3-D

35. Dimensions on items in assemblies are typically *

Mark only one oval.

- ☐ not shown
- ☐ required
- ☐ shown on each part
- ☐ toleranced

36. Hidden lines in a sectional assembly view are *

Mark only one oval.

- ☐ displayed as a solid line
- ☐ typically not shown
- ☐ shown as phantom lines
- ☐ mandatory

37. Information found on a bill of materials includes *

Mark only one oval.

- ☐ size and tolerance
- ☐ cutting speed and tool path
- ☐ material type and quantity
- ☐ drawing scale and size

38. The portion of the drawing that contains information about the type of material, number of parts, and identifies each part on the drawing is the *

Mark only one oval.

- ☐ border
- ☐ general notes
- ☐ bill of materials
- ☐ title block

39. Which GD&T symbol does the image below represent? *



Mark only one oval.

- ☐ Total runout
- ☐ Profile of a Line
- ☐ Position
- ☐ Angularity

40. Which GD&T symbol does the image below represent? *



Mark only one oval.

- ☐ Concentricity
- ☐ Position
- ☐ Circularity
- ☐ Cylindricity

41. Which GD&T symbol does the image below represent? *



Mark only one oval.

- ☐ Angularity
- ☐ Profile of a Surface
- ☐ Parallelism
- ☐ Flatness

42. Which GD&T symbol does the image below represent? *



Mark only one oval.

- ☐ Circularity
- ☐ Concentricity
- ☐ Position
- ☐ Circular runout

43. Which GD&T symbol does the image below represent? *



Mark only one oval.

- ☐ Flatness
- ☐ Profile of a Line
- ☐ Straightness
- ☐ Profile of a Surface

This content is neither created nor endorsed by Google.

Google Forms